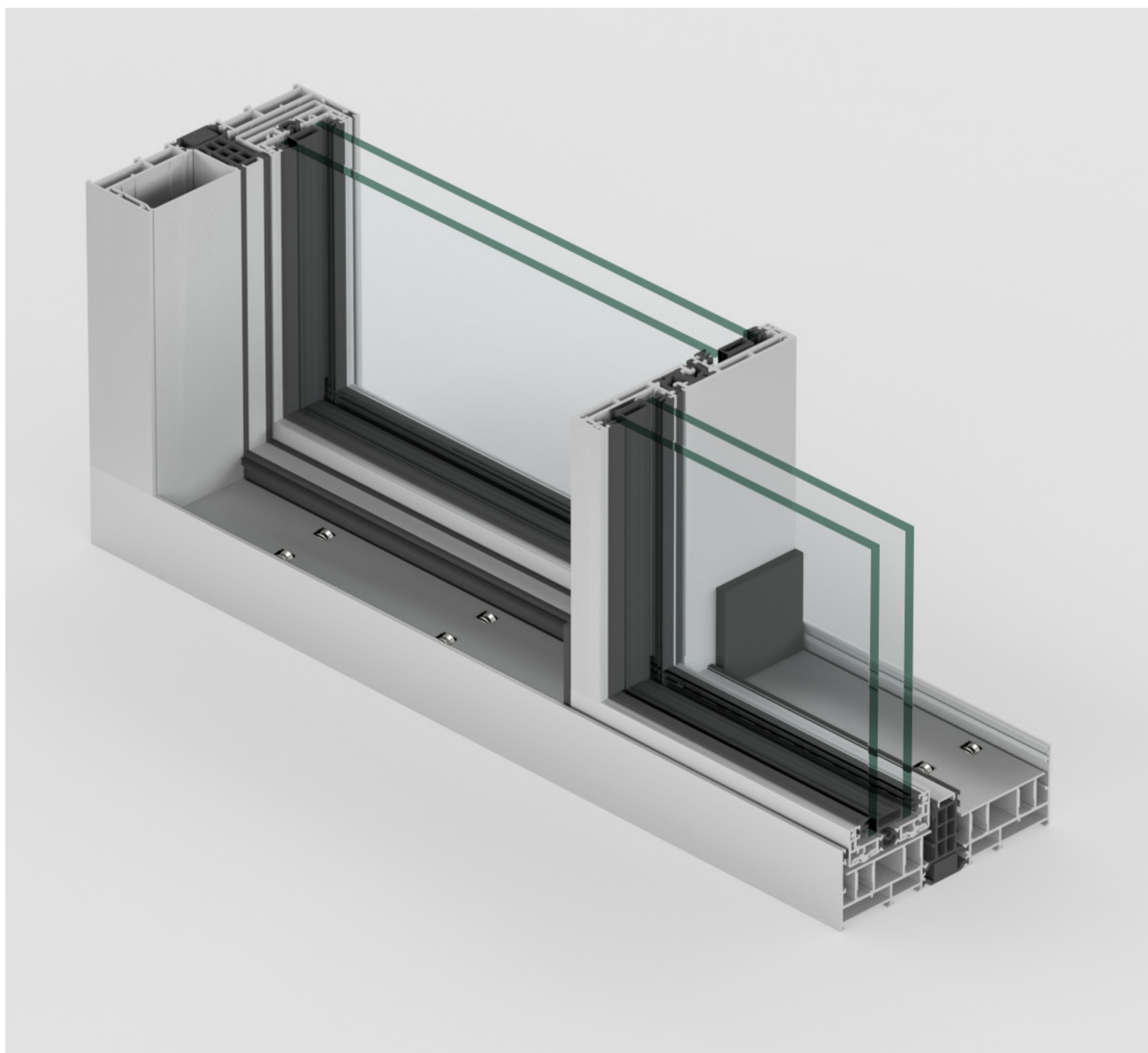


Sliding Doors



S4

Slimline aluminium sliding doors
designed for maximum luminosity




S4 Sliding Doors


Minimal sightlines, maximum luminosity

With sashes of up to 4 meters, interlock sightline of only 25 mm and the option to embed frames in the perimeter, the S4 sliding door system brings elegant minimalist design to large openings. Boasting a glazed surface of up to 94% and maximum glazing capacity of 54 mm, the system enables people to transform their homes with floor-to-ceiling glazing that delivers maximum luminosity through virtually unobstructed panoramic views. And with combinations of up to six sashes and the option to design corner configurations, the S4 is the first choice for creating large-scale glass feature walls that seamlessly connect the interior and exterior of any home.

Features




uValue from 0.9 W/m2K
Most energy efficient sliding door system available




Up to 4m Sash Height
Largest slimline sliding door system on the market



Range of Finishes
RAL Classic, metallic or anodised finishes.




Sound Insulation
Cancels out exterior noise up to 43db




Thermal Barrier
Heat-resistant glass fibre reinforced insulating bars




Burglary Resistance
Security tested



Wind Resistance
Certified C3/C4 Class to meet EN 12210



Air Permeability
Certified 4 Class to meet EN 12207



Water Tightness
Certified 7A / 9A Class to meet EN 12208

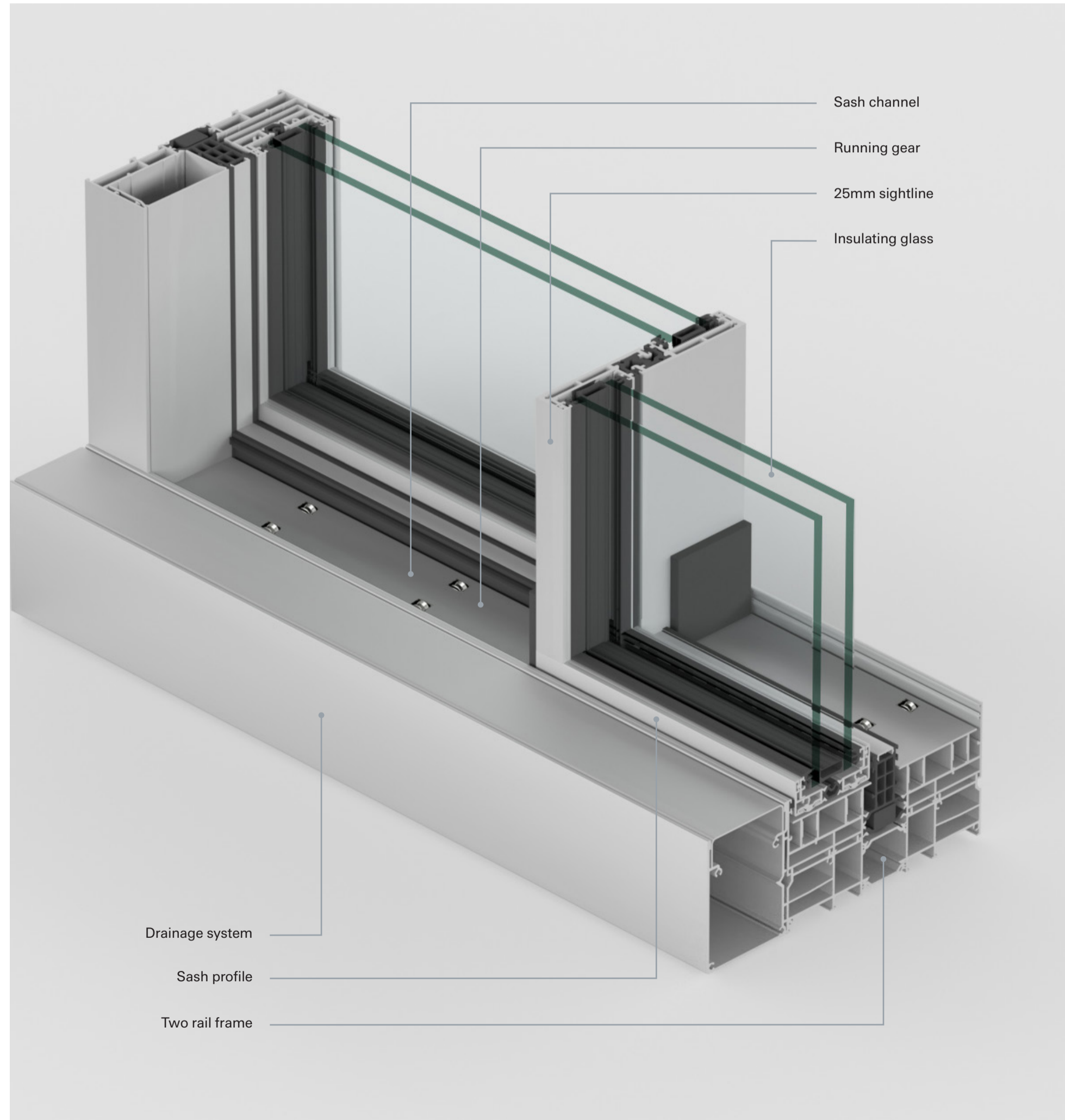


Overview

Perla
Slimline Sliding Doors
System overview

Minimalist design meets
exceptional engineering

1. 2 mm thick aluminium profiles – high precision production lines
2. Flush threshold with hidden rail option
3. Smooth sliding movement provided by rollers positioned in the frame
4. Option to conceal sliding sashes into wall pockets
5. 90° corner configuration available
6. 1-6 sliding sashes and up to three rails
7. Exceptional thermal and acoustic values
8. Profile depth compatible with insulating glass up to 54 mm



Large dimensions
Up to 4000 mm height
/ 4000 mm width

400^{cm}
width / height

Slimline interlock
Elegant sightlines
of just 25 mm

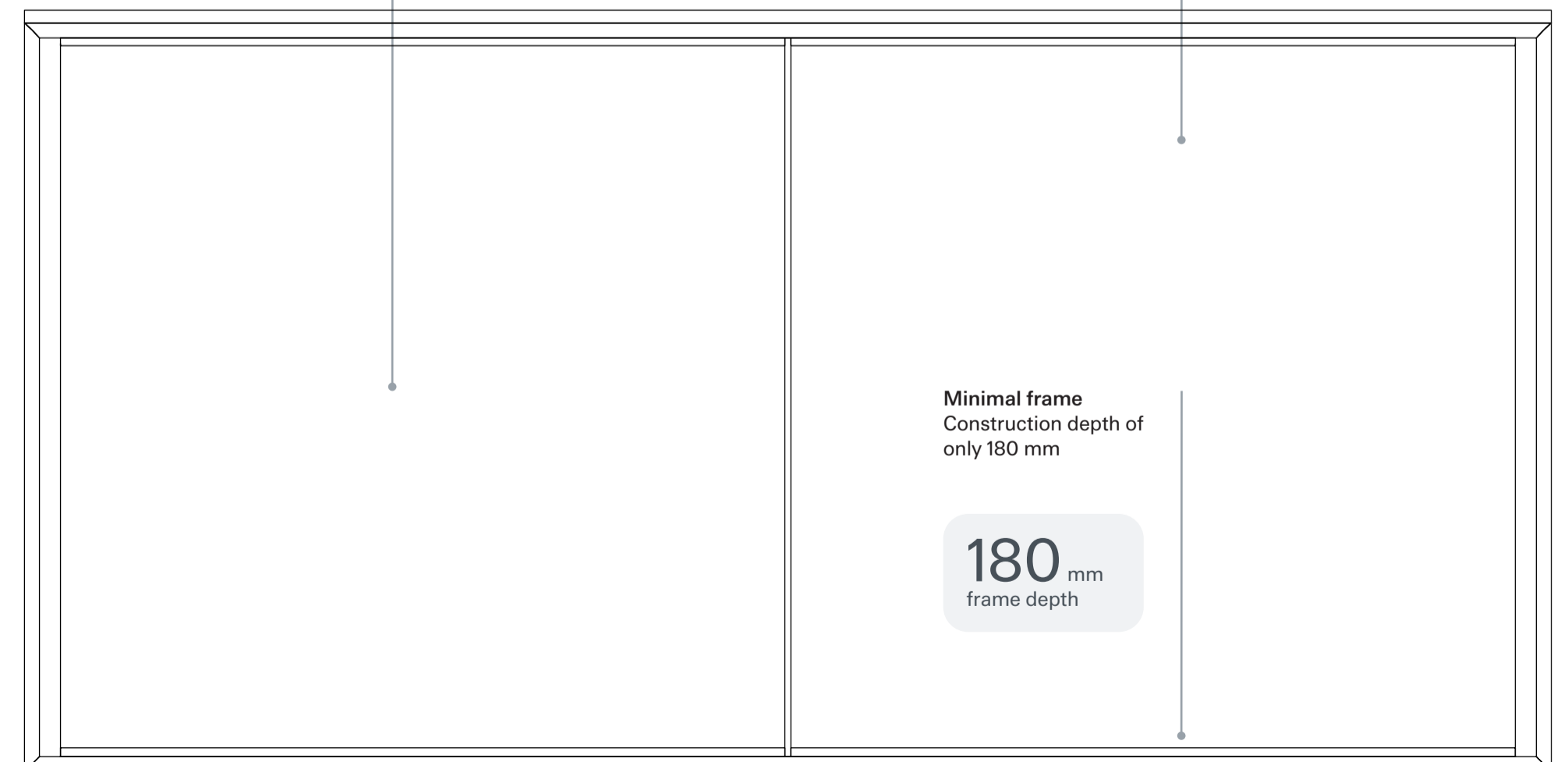
25^{mm}
sightline

Excellent uValues
Compatible with double
and triple glazing

54^{mm}
glazing options

Minimal frame
Construction depth of
only 180 mm

180^{mm}
frame depth



Design options

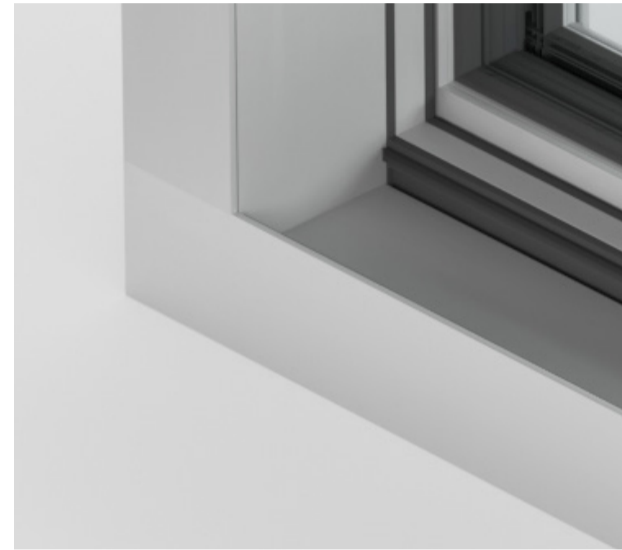
RAL powder-coated and metallic finishes

While stunning in its own right, the slimline frame of the S4 may be powder coated in any RAL colour to complement the interior design or external aesthetic of the property. Further more, thanks to the surface properties of high-grade aluminium, finishing options extend to a wide range of metallic powder coatings.

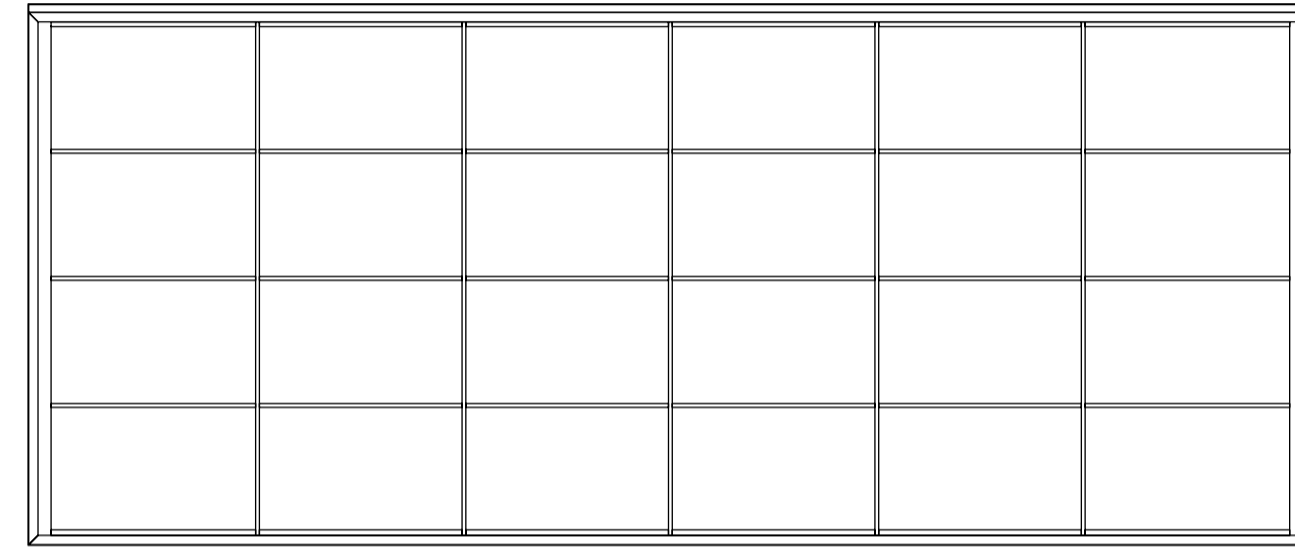
Perla
S4 Sliding Doors
System overview

Achieve a classic or industrial aesthetic with glazing bars

Glazing bars consist of an aluminium strips fixed to the surface of a duplexed glass unit. The glazing unit is full size, filling the sash or fix. The glazing bars are then applied to the surface in whatever configuration or direction specified. Patterns can be very intricate or designed to match existing or neighbouring buildings.



Your doors, your style
Bottom frames, sashes, meeting points and handles can be finished in a wide range of metallic and classic colour powder-coatings.

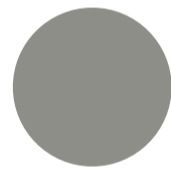


Total design freedom
With horizontal glazing bars of up to one metre, it's possible to design truly unique glazing configurations.

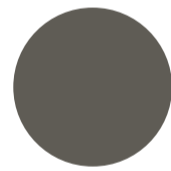
Metallic Powder Coatings



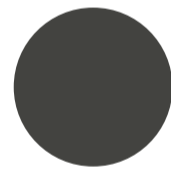
IGP Classic Comet



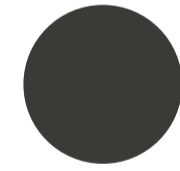
IGP Classic Triton



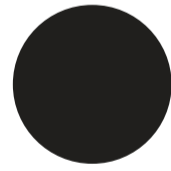
IGP Classic Moon Dust



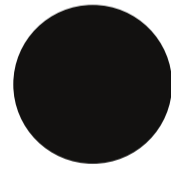
IGP Classic Eruption



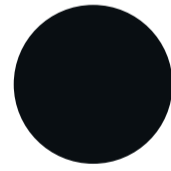
IGP Classic Shooting Star



IGP Classic Galaxy



IGP Classic Meteorite



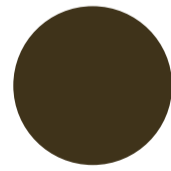
IGP Classic Gravity



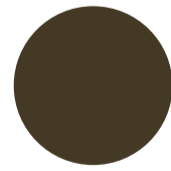
IGP DURA Classic 32



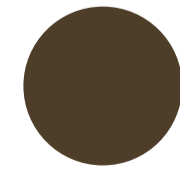
IGP DURA Classic 33



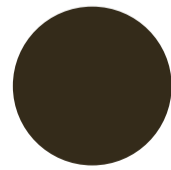
IGP DURA Aged Bronze



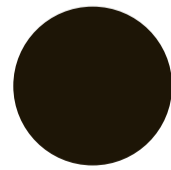
IGP DURA Smooth Carriage



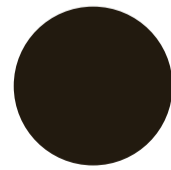
IGP DURA Medium Bronze



IGP DURA Scorpion Shell



IGP DURA Walnut Wood



IGP DURA Classic 34

Colour Powder Coatings



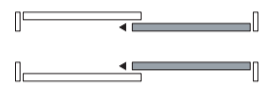
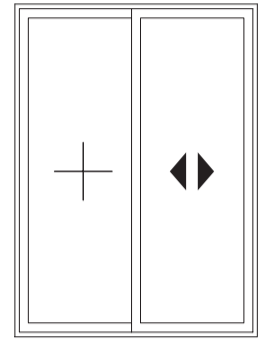
RAL Classic



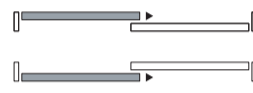
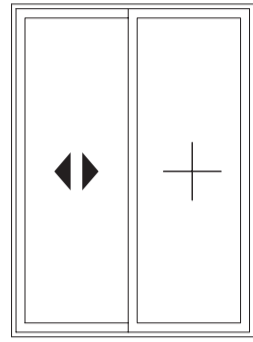
Opening Possibilities

Two Rail Frame

1 Sash door

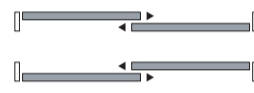
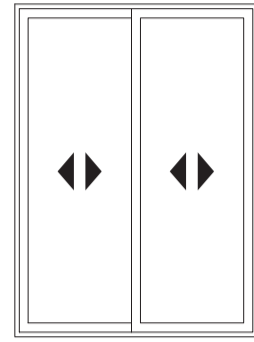


Max sash dimensions
4000 mm (w) × 4000 mm (h)



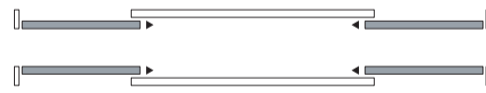
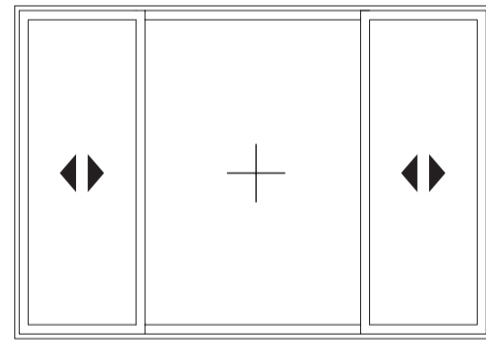
Max sash dimensions
4000 mm (w) × 4000 mm (h)

2 Sashes door



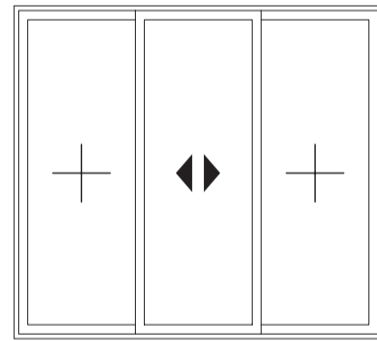
Max sash dimensions
4000 mm (w) × 4000 mm (h)

2 Sashes door with central fixed light



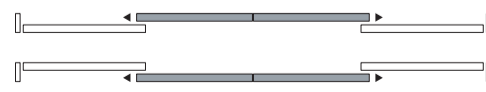
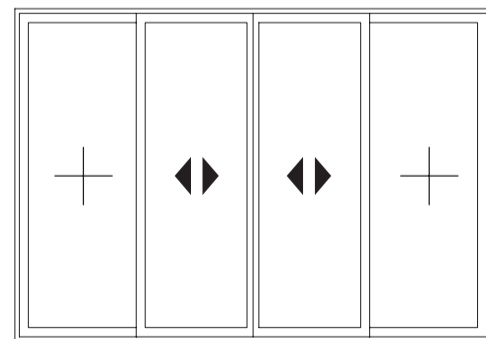
Max sash dimensions
4000 mm (w) × 4000 mm (h)

1 Sash door with 2 lateral fixed lights



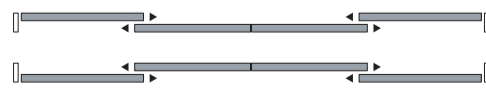
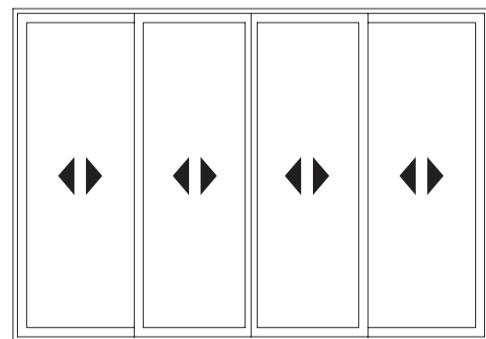
Max sash dimensions
4000 mm (w) × 4000 mm (h)

2 Sashes door with 2 lateral fixed lights



Max sash dimensions
4000 mm (w) × 4000 mm (h)

1 Sashes door

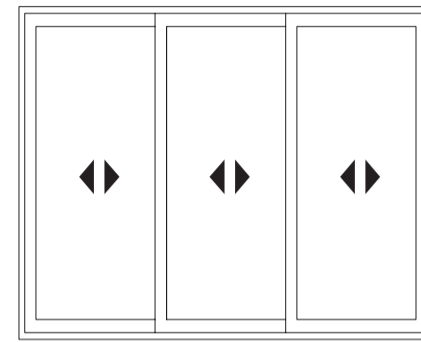


Max sash dimensions
4000 mm (w) × 4000 mm (h)

Perla S4 Sliding Doors Opening Possibilities

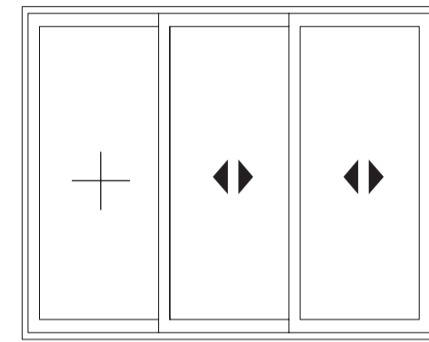
Three Rail Frame

3 Sashes door



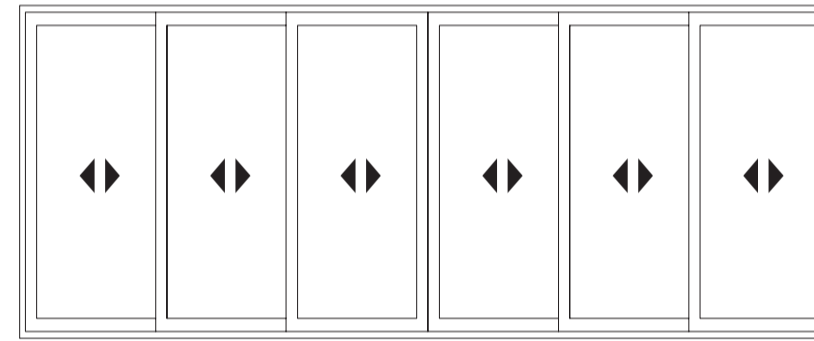
Max sash dimensions
4000 mm (w) × 4000 mm (h)

2 Sashes door with lateral fixed light



Max sash dimensions
4000 mm (w) × 4000 mm (h)

6 Sashes door

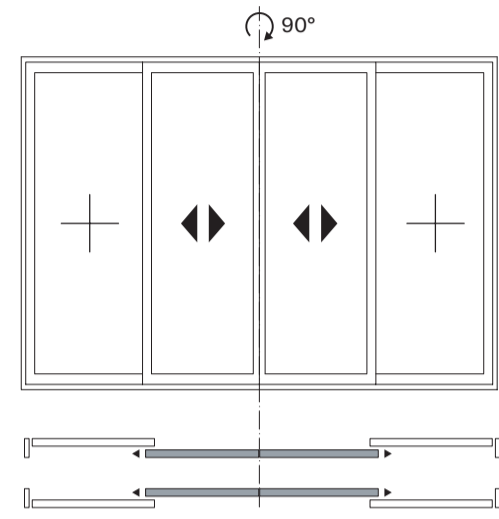


Max sash dimensions
4000 mm (w) × 4000 mm (h)

Opening Possibilities

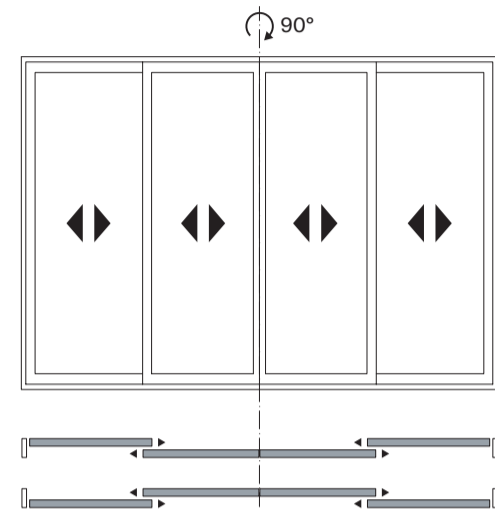
Corner Joint Profile

2 Sashes door with 2 lateral fixed lights



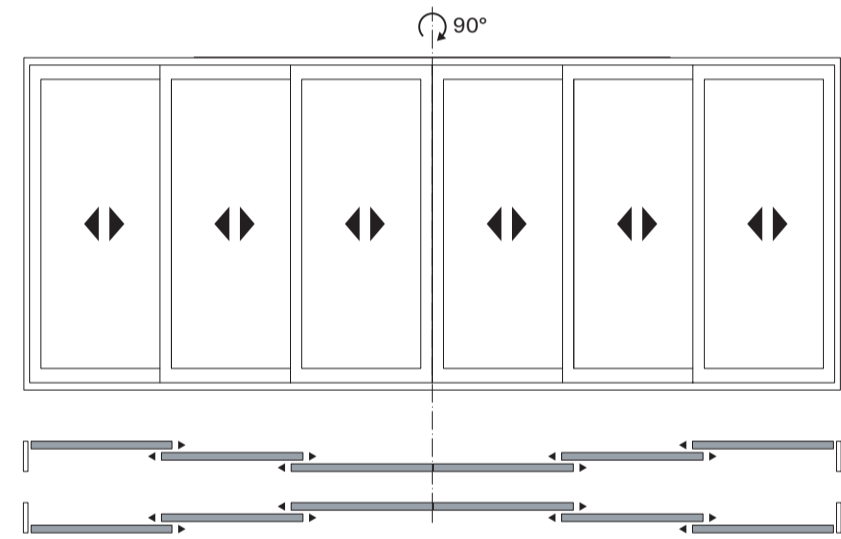
Max sash dimensions
4000 mm (w) × 4000 mm (h)

4 Sashes door



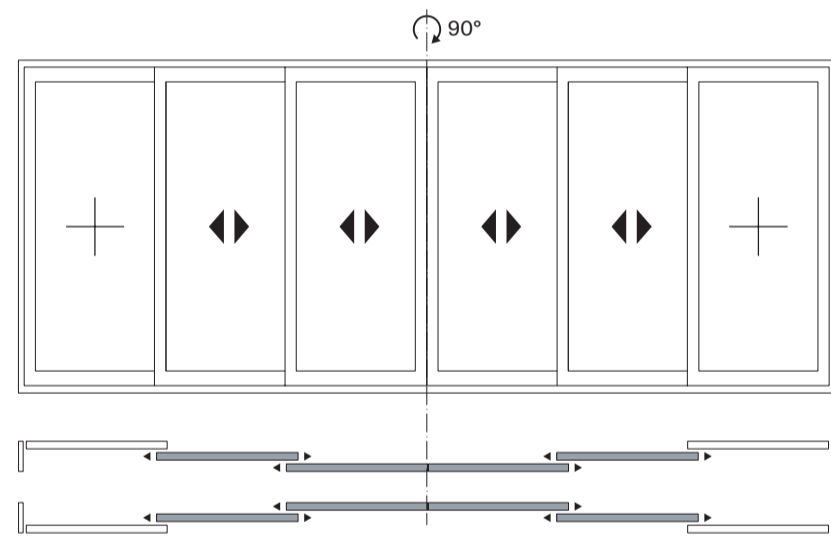
Max sash dimensions
4000 mm (w) × 4000 mm (h)

6 Sashes door



Max sash dimensions
4000 mm (w) × 4000 mm (h)

4 Sashes door with 2 lateral fixed lights

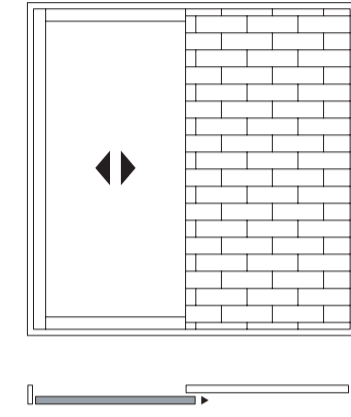


Max sash dimensions
4000 mm (w) × 4000 mm (h)

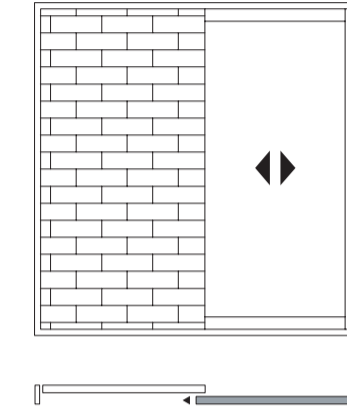
Perla S4 Sliding Doors Opening Possibilities

Galandage System

1 Sash door

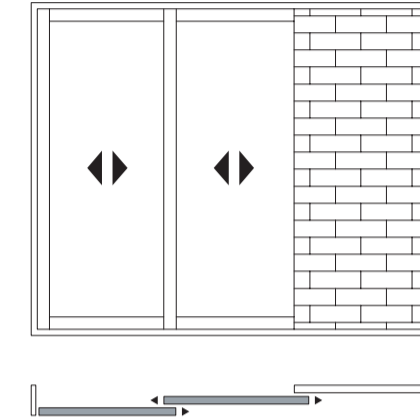


Max sash dimensions
4000 mm (w) × 4000 mm (h)

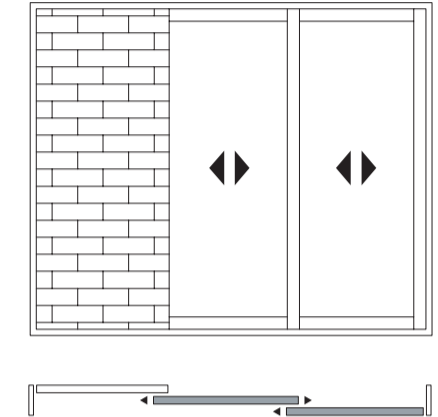


Max sash dimensions
4000 mm (w) × 4000 mm (h)

2 Sashes door

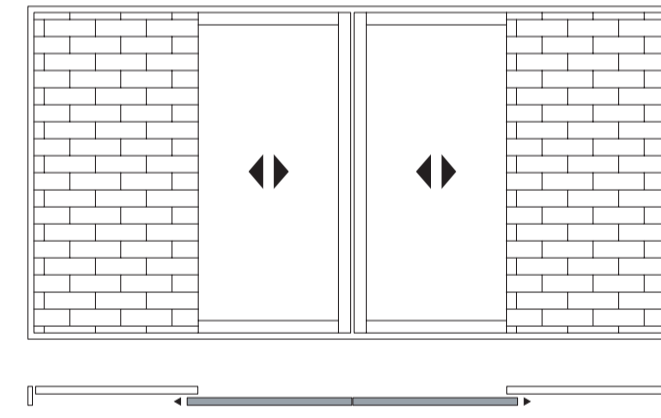


Max sash dimensions
4000 mm (w) × 4000 mm (h)



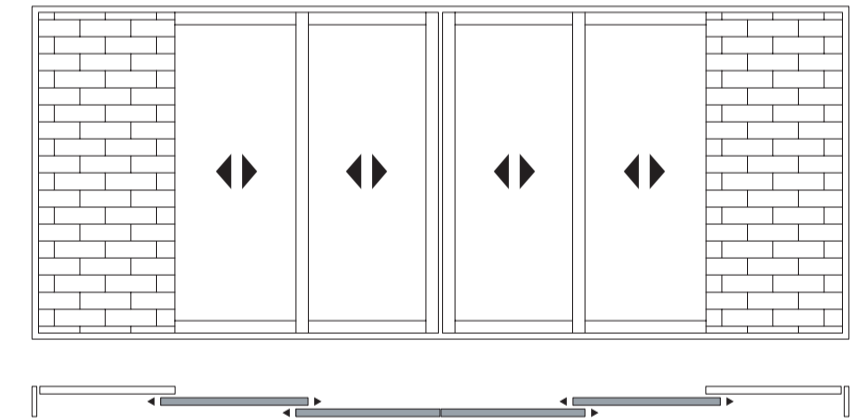
Max sash dimensions
4000 mm (w) × 4000 mm (h)

2 Sashes door



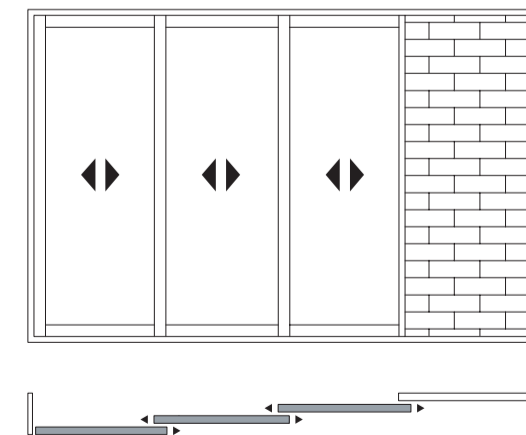
Max sash dimensions
4000 mm (w) × 4000 mm (h)

4 Sashes door

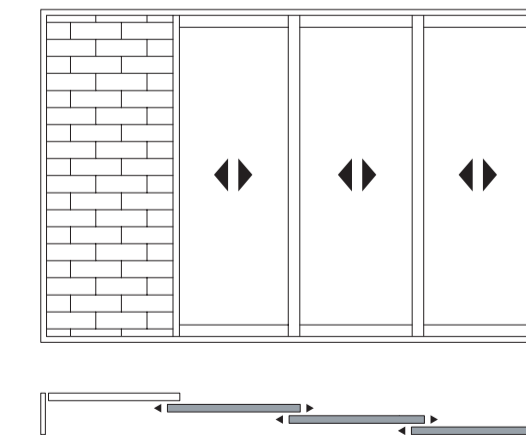


Max sash dimensions
4000 mm (w) × 4000 mm (h)

3 Sashes door



Max sash dimensions
4000 mm (w) × 4000 mm (h)



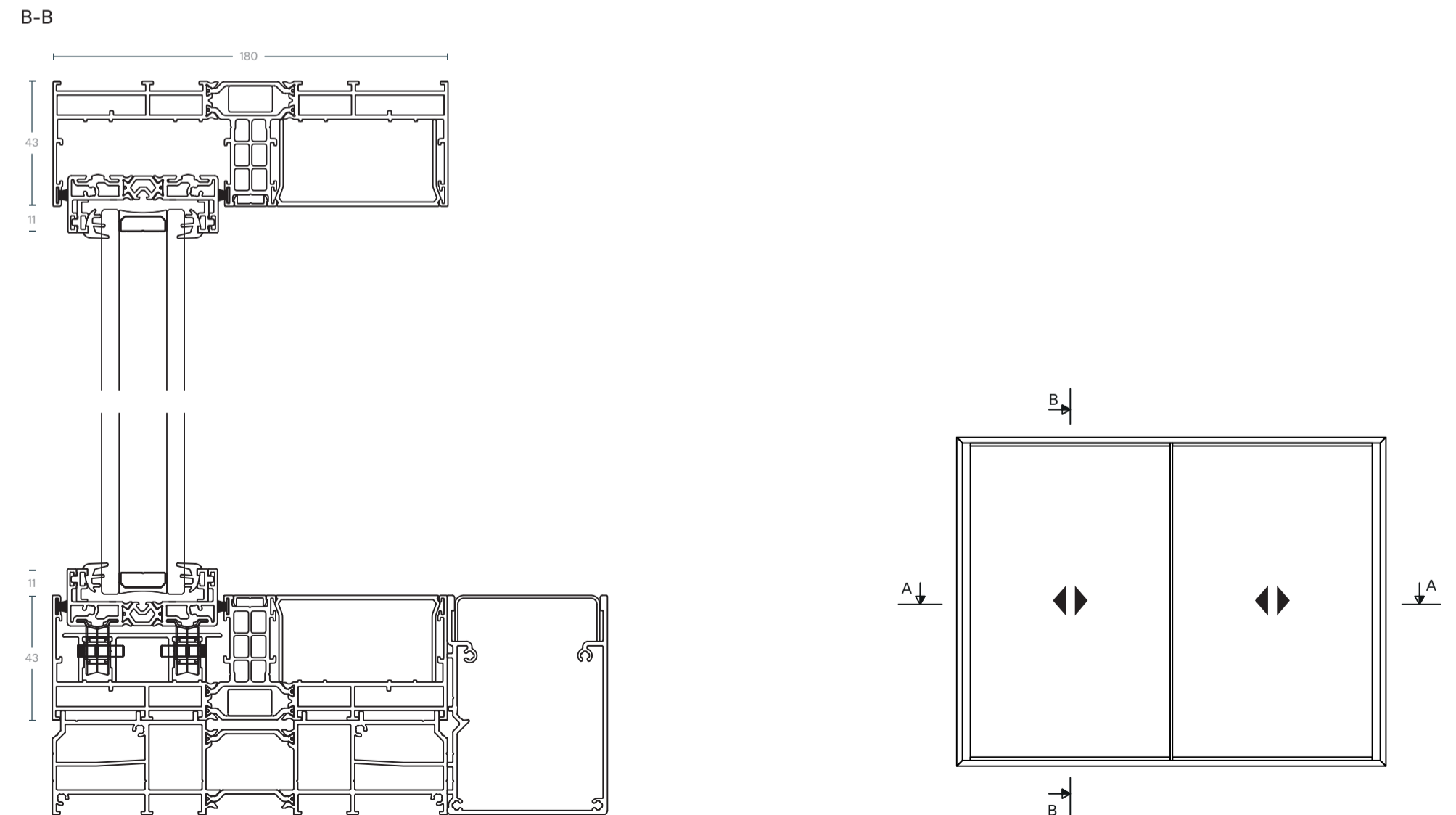
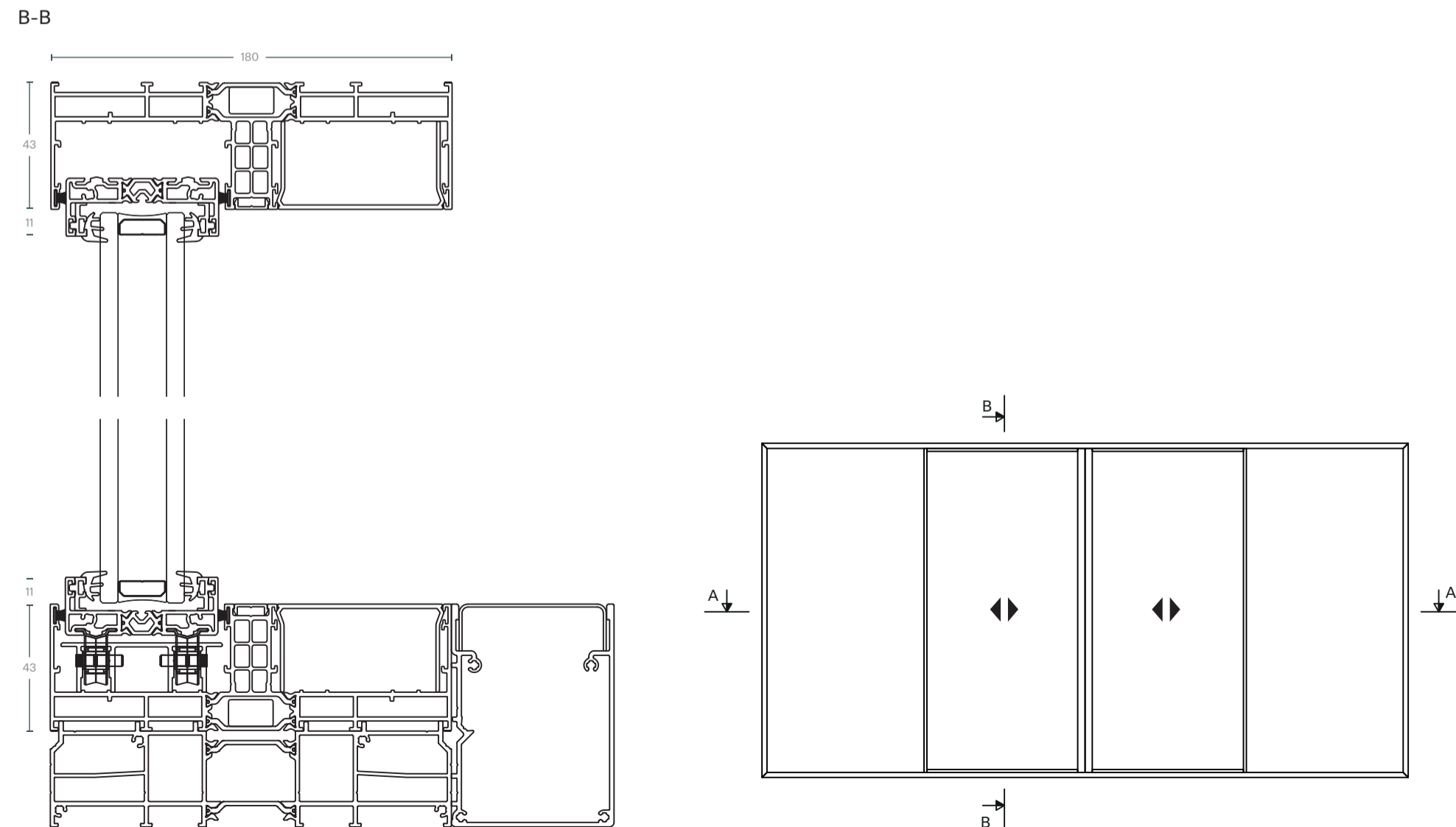
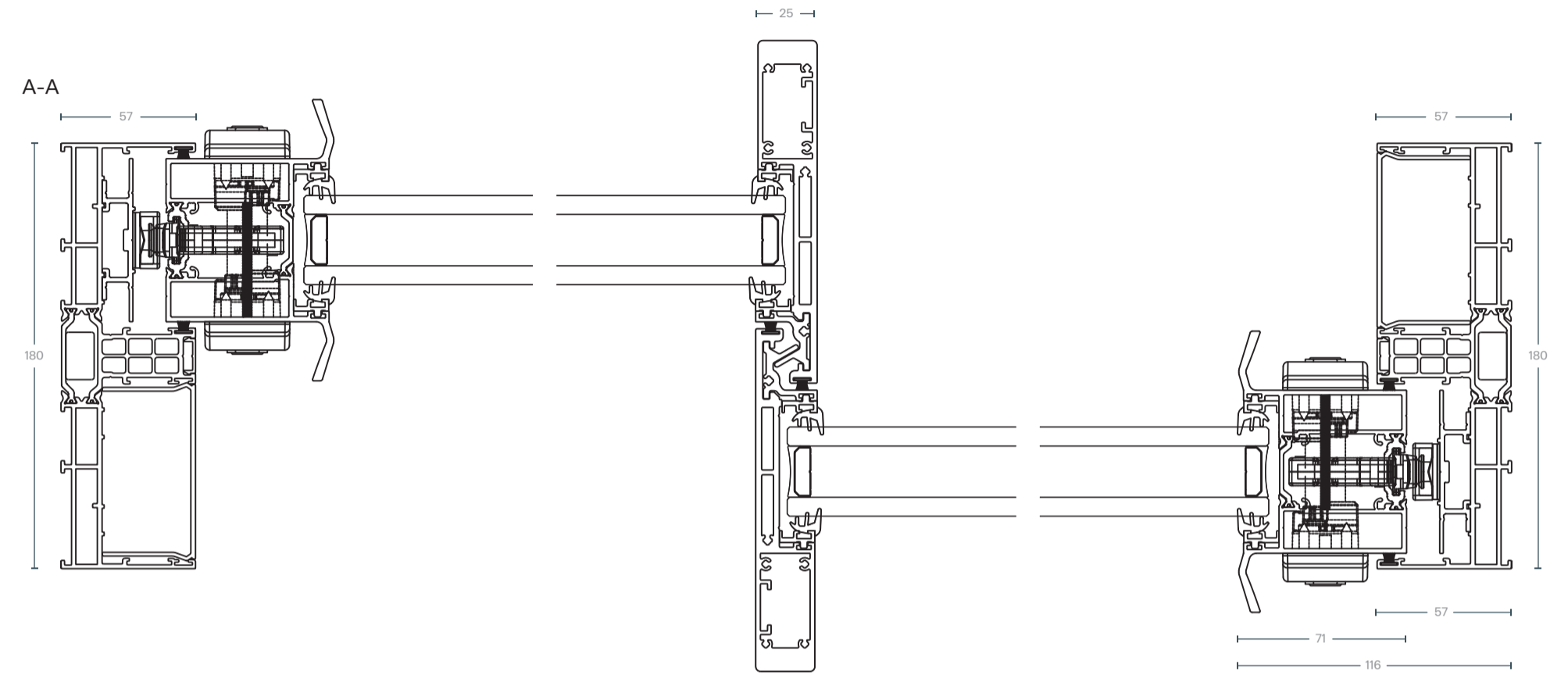
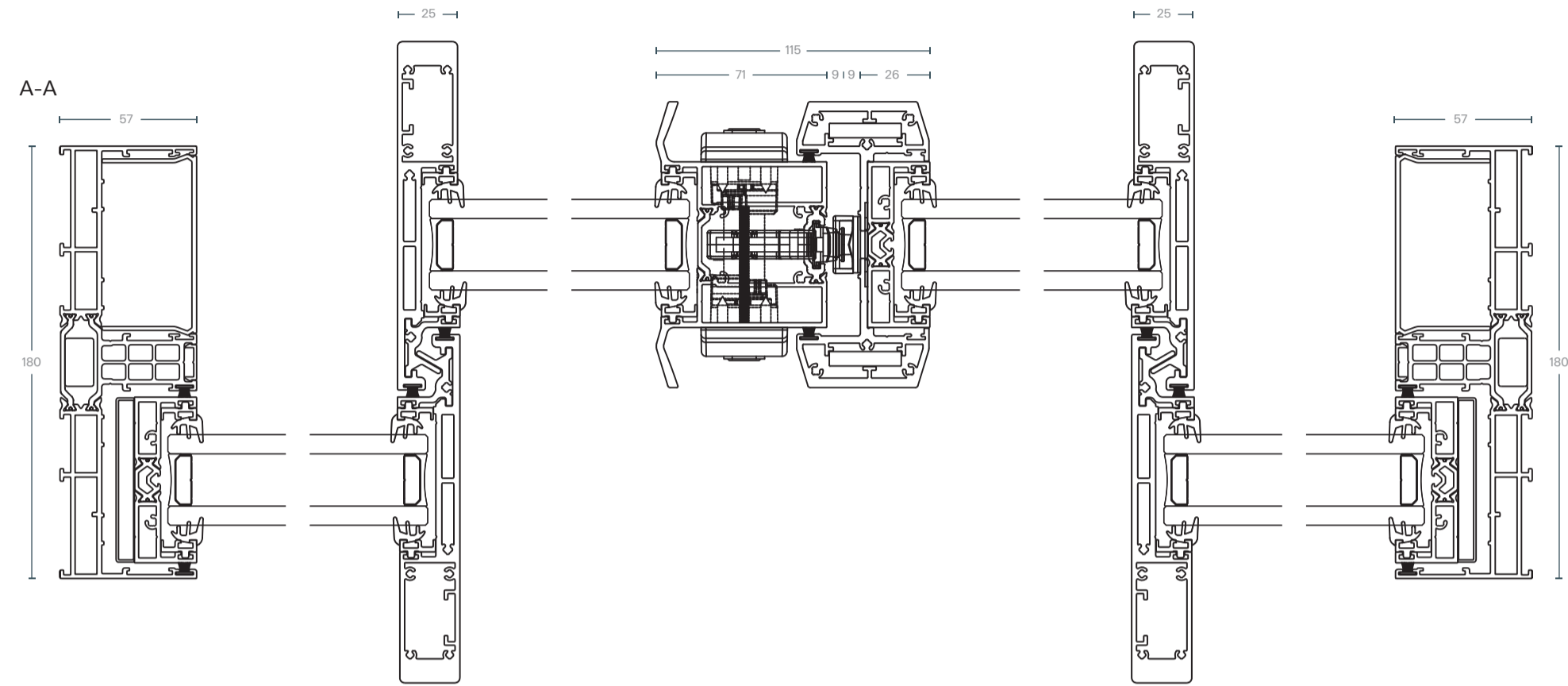
Max sash dimensions
4000 mm (w) × 4000 mm (h)

Double Rail Frame
Eurocylinder Lock

Perla
S4 Sliding Doors
Example Drawings

Double Rail Frame
Eurocylinder Lock

Perla
S4 Sliding Doors
Example Drawings

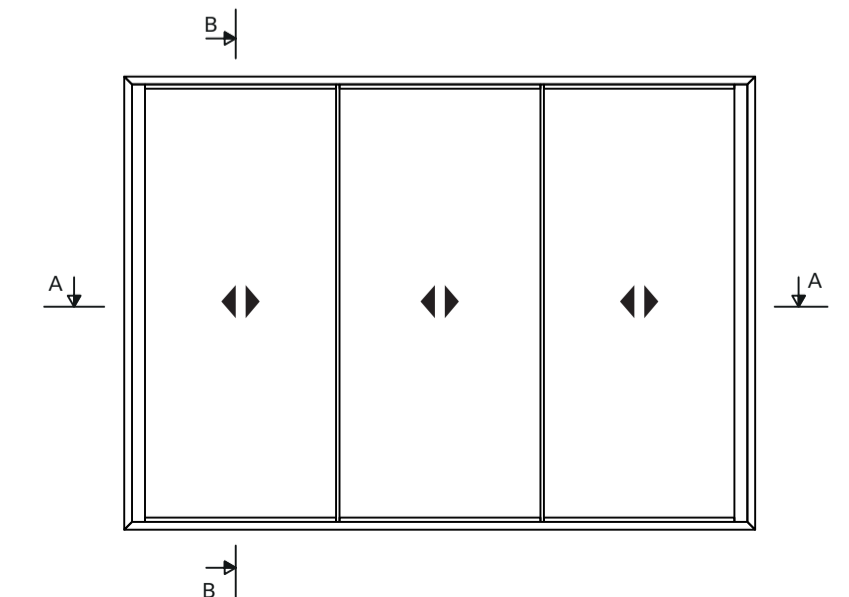
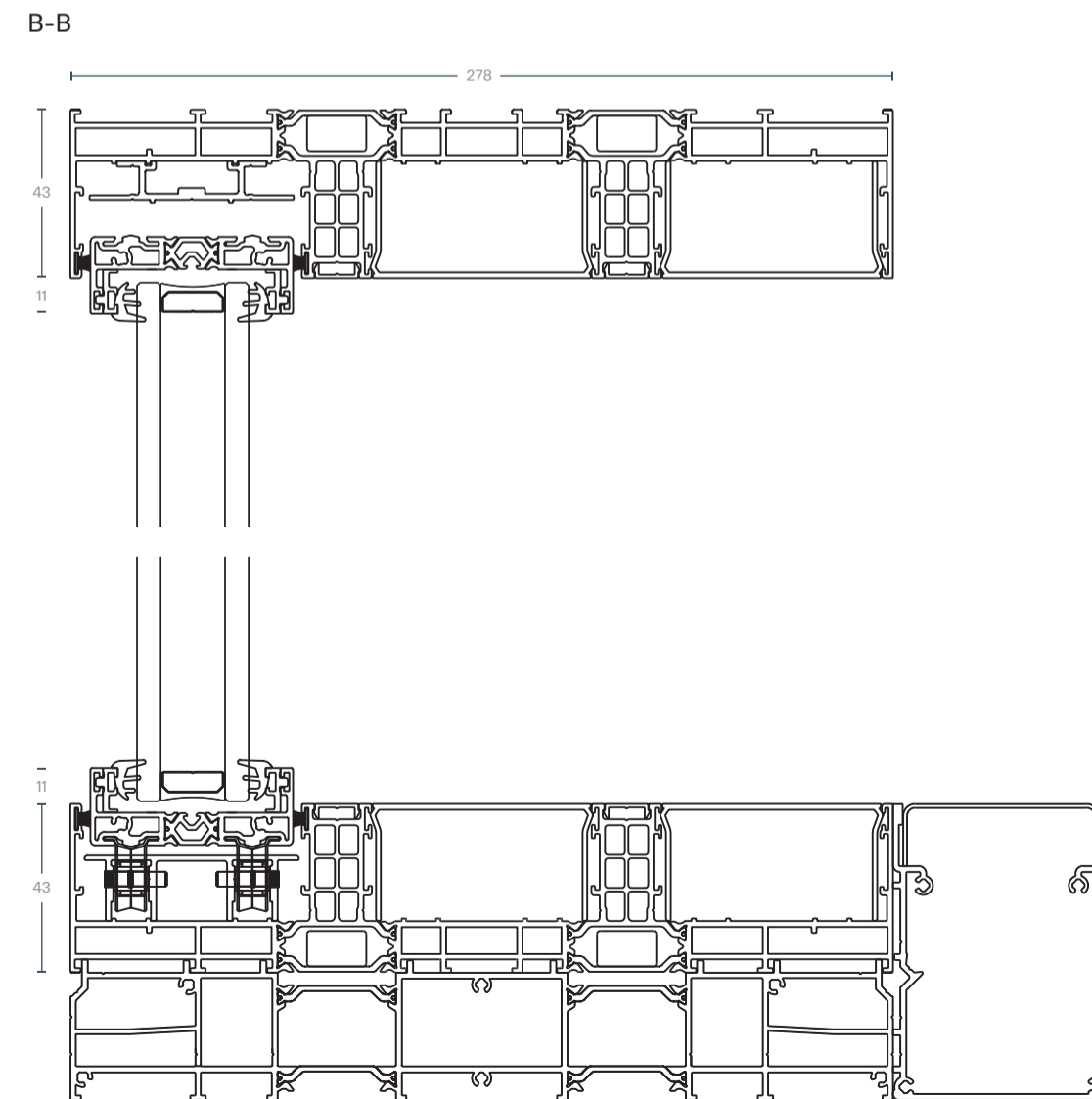
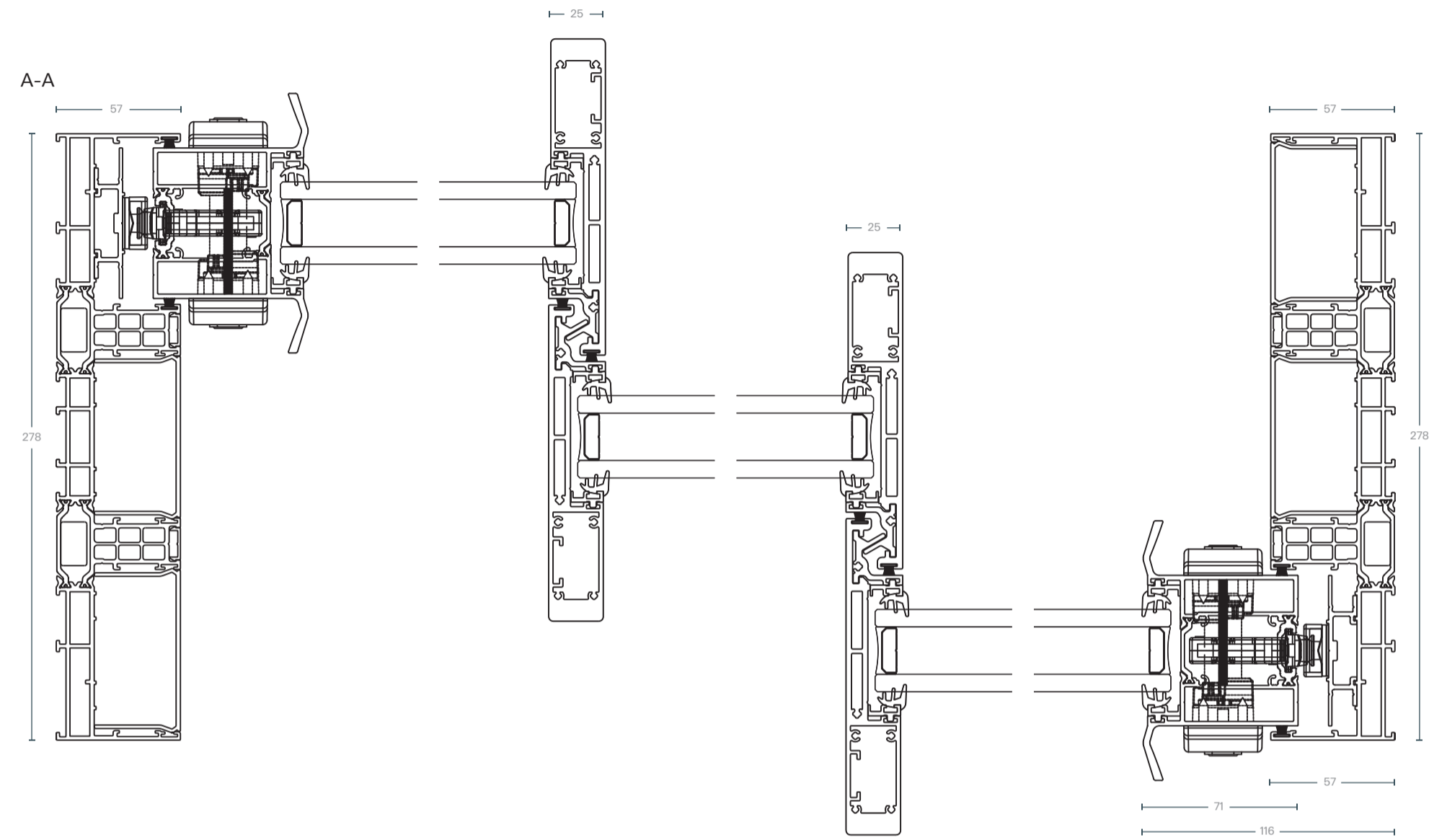
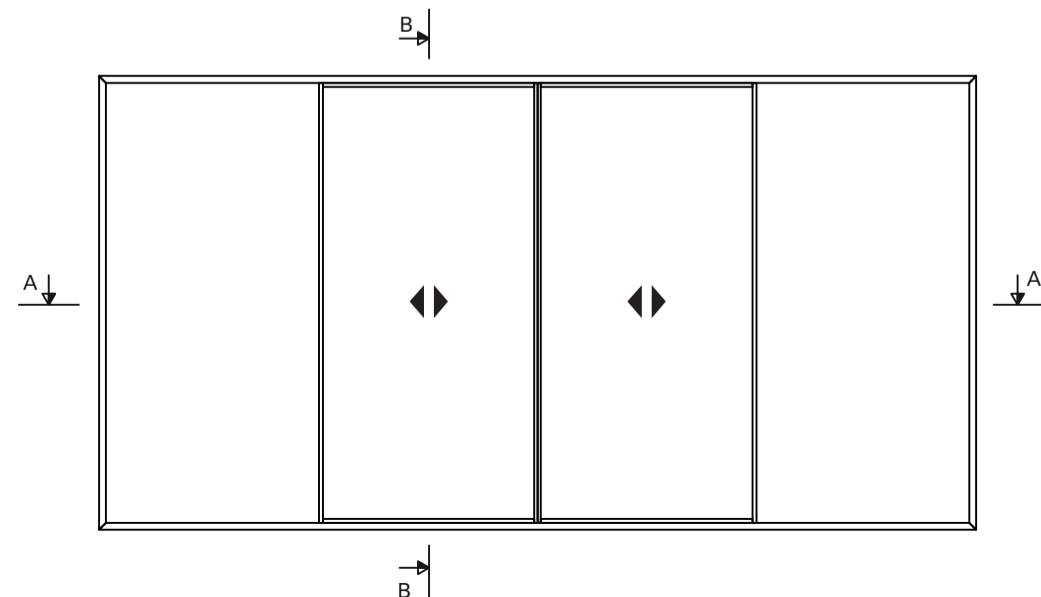
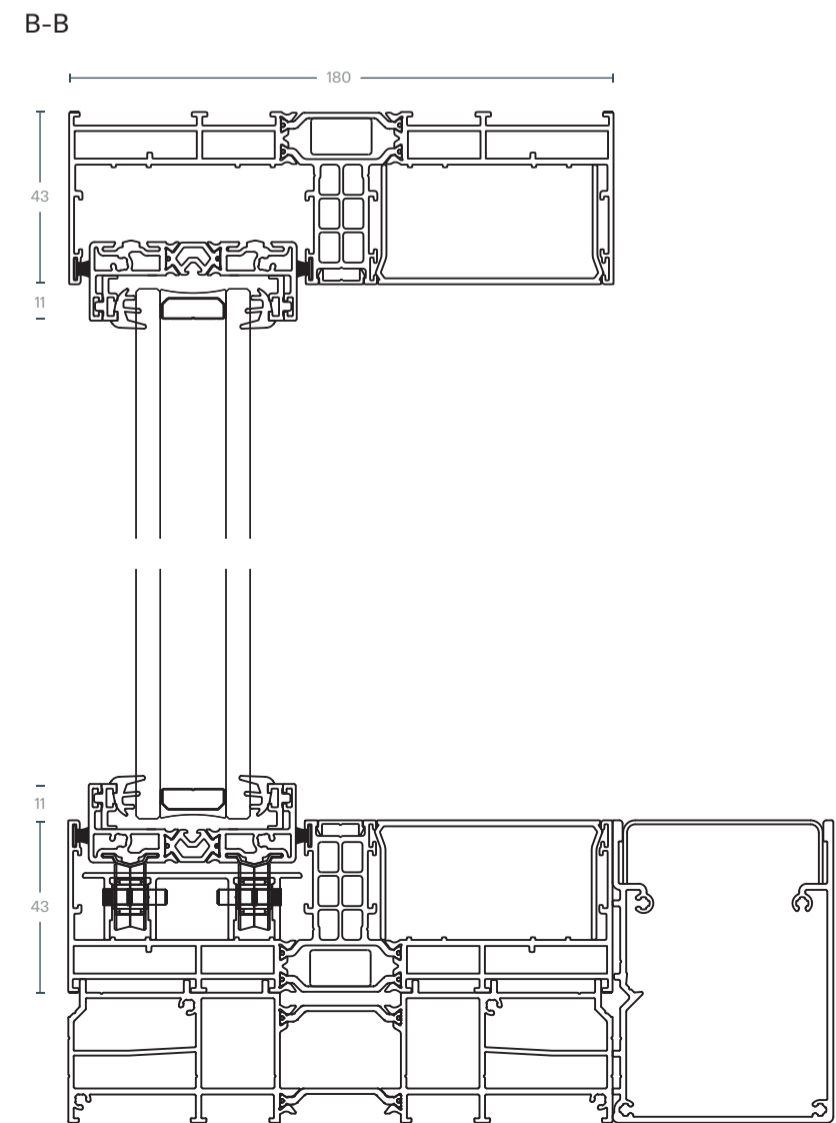
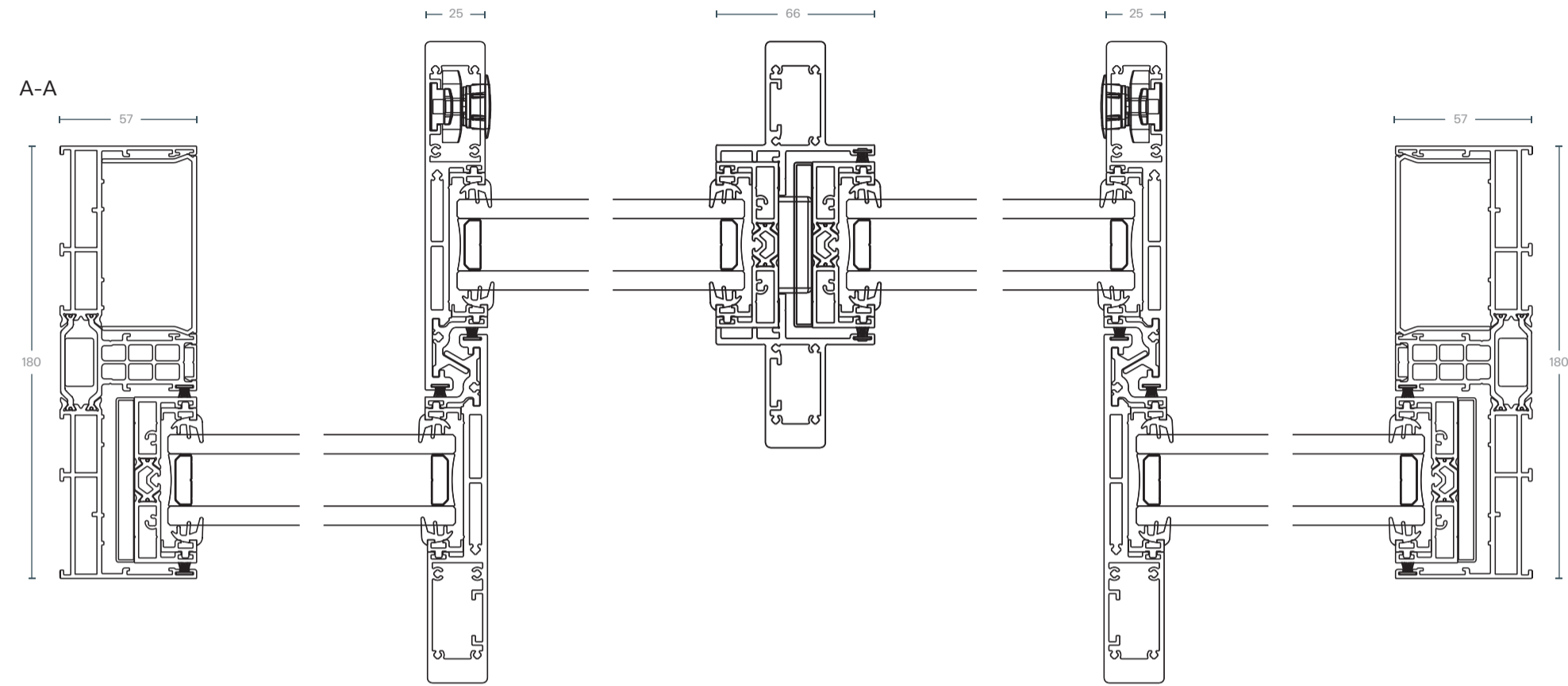


Double Rail Frame
Internal Lock

Perla
S4 Sliding Doors
Example Drawings

Triple Rail Frame
Eurocylinder Lock

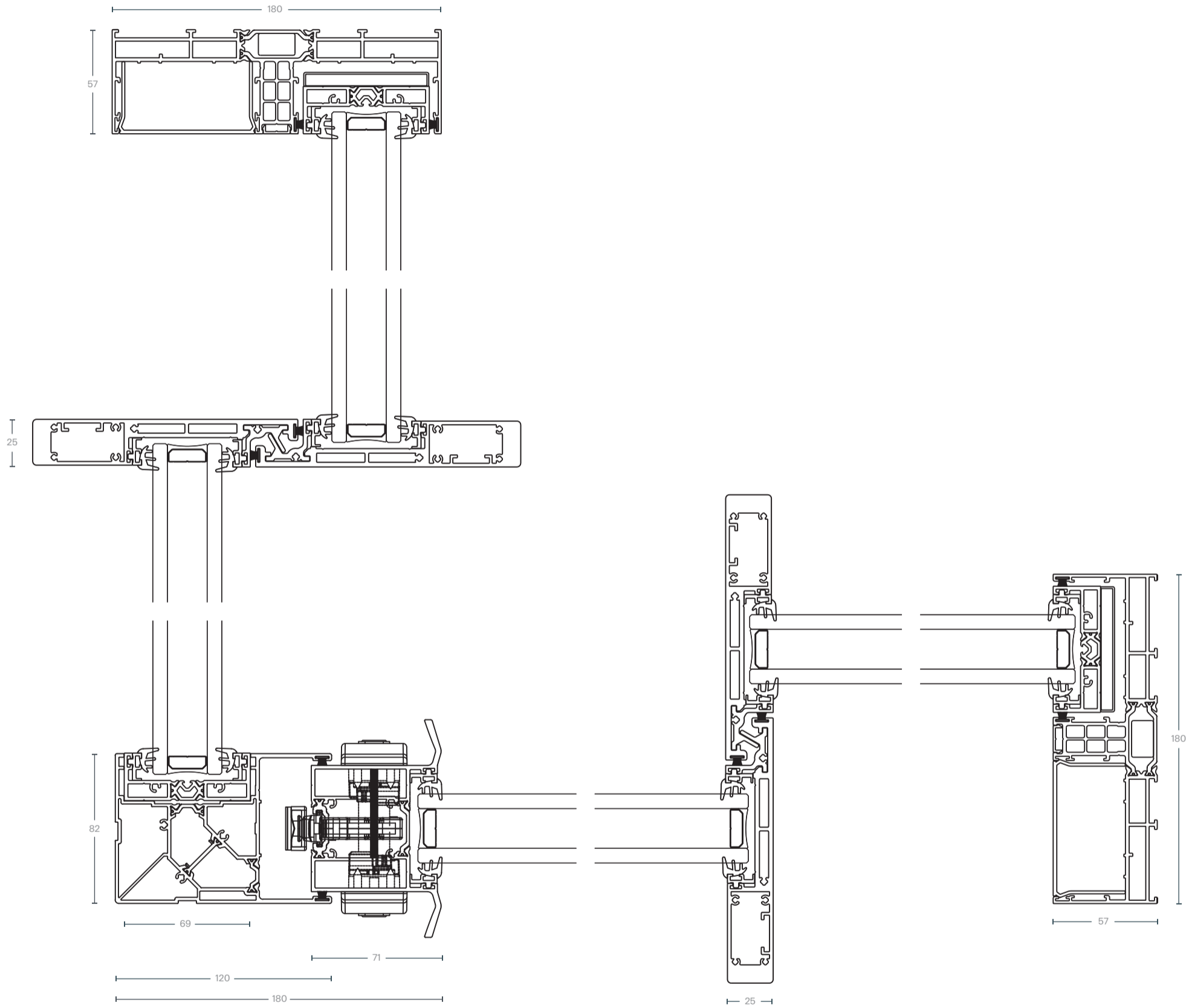
Perla
S4 Sliding Doors
Example Drawings



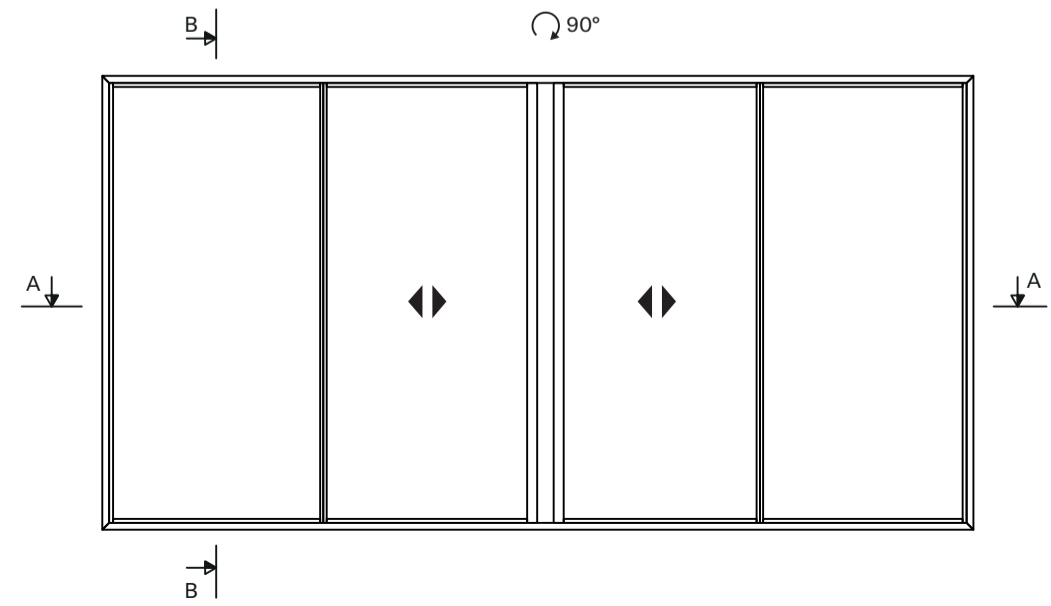
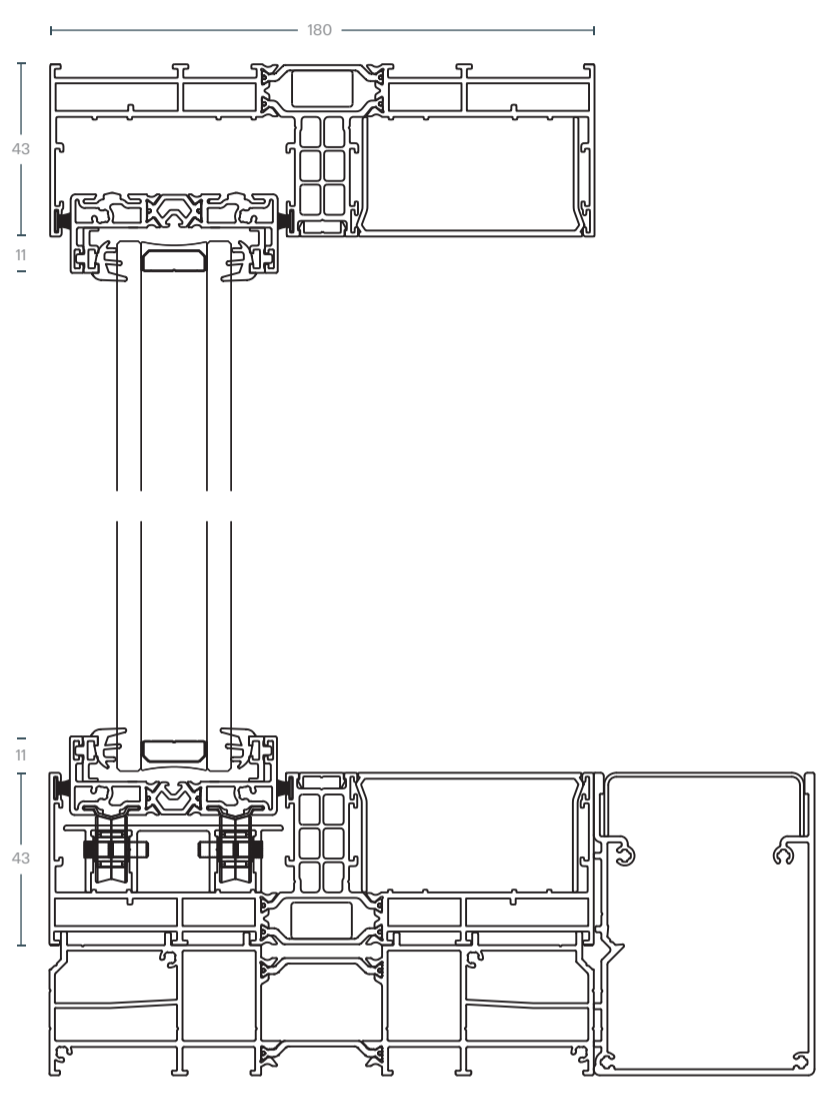
Corner Profile
Eurocylinder Lock

Perla
S4 Sliding Doors
Example Drawings

A-A



B-B



We reserve the right to make technical improvements or modifications of any type even during the validity of this catalogue without prior notice to the customer. Perla Windows Limited takes no liability for misprints or mistakes in scale reproductions. No part of this catalogue may be published, distributed, extracted, reused or reproduced in any form except under written permission by Perla Windows Limited. Technical drawings are for guidance only and must be studied and verified from a mechanical, functional and static point of view, relieving the companies of every responsibility of any kind.

Published 04.2025. Subject to change.



Perla Windows Limited
Unit 2, 8 Greenock Road
Acton Industrial Estate
London W3 8DU UK

T +44 0 203 906 1776
E info@perlawindows.com

www.perlawindows.com



Find out more and be inspired