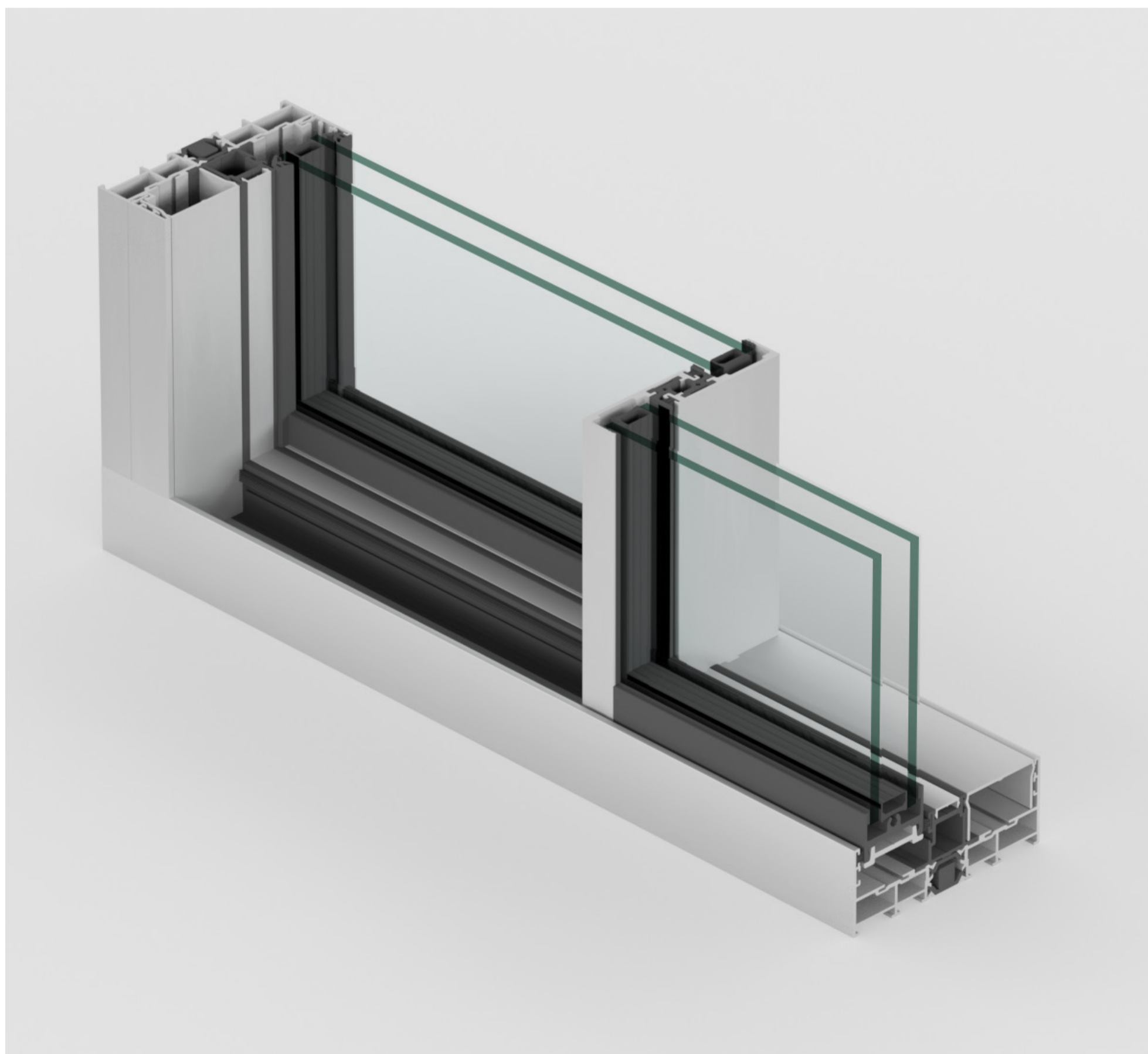


Sliding Doors



S3

High-performance slimline
aluminium sliding doors




S3 Sliding Doors

Elegance and energy efficiency in harmony

The Perla S3 is a thermally-broken, slimline sliding system that delivers maximum light with minimal obstruction through a discreet interlock profile. Flexible and versatile, the design features a super-slim 20 mm sightline and offers the option to conceal the frame along the perimeter as well as the ability to design 90° corner configurations. Boasting large glass coverage and an elegant architectural aesthetic, the Perla S3 enables people to design sliding doors that transform the way they experience their home, connecting indoor and outdoor spaces and illuminating living spaces with natural light.

Features




uValue from 1.3 W/m2K
Most energy efficient sliding door system available



Up to 3m Sash Height
Large scale glazing with super-slim sightlines



Range of Finishes
RAL Classic, metallic or anodised finishes.




Sound Insulation
Cancels out exterior noise up to 41db




Thermal Barrier
Heat-resistant glass fibre reinforced insulating bars




Burglary Resistance
Security tested



Wind Resistance
Certified C5 Class to meet EN 12210



Air Permeability
Certified 4 Class to meet EN 12207



Water Tightness
Certified 7A Class to meet EN 12208

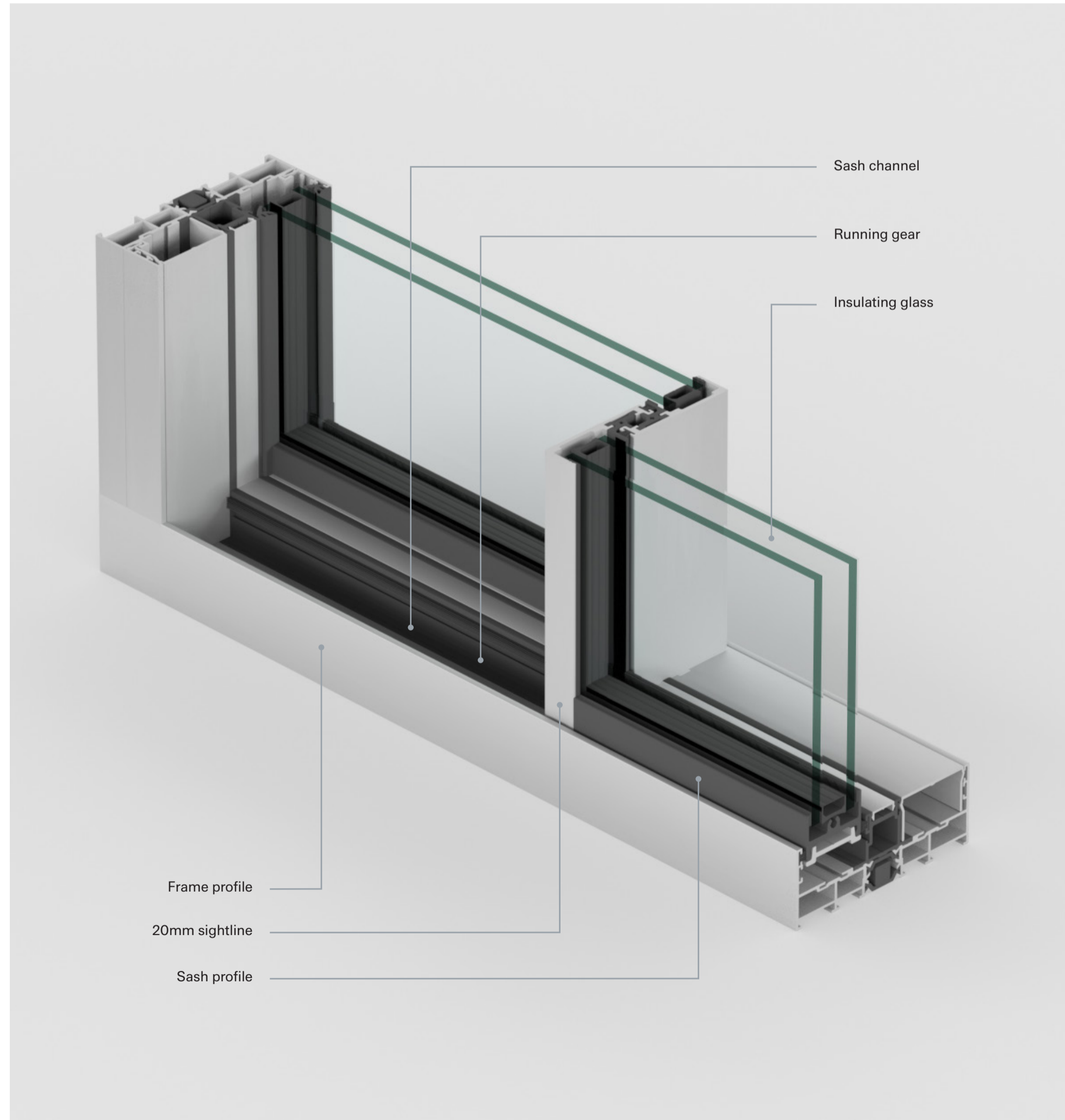


Overview

Perla
S3 Sliding Doors
System overview

Minimalist design meets
exceptional engineering

1. 1.7 mm thick aluminium profiles – high precision production lines
2. Smooth sliding movement provided by rollers positioned in the frame
3. Option to conceal the frames within the structure of the opening
4. 90° corner configuration available
5. Option to hide sliding sashes into wall pockets
6. 1-6 sliding sashes and up to three rails
7. Exceptional thermal and acoustic values
8. uValue from 1,3 (W/m²K)



Large dimensions
Up to 3000 mm height
/ 4400 mm width

300 cm
max. height

Slimline interlock
Elegant sightlines
of just 20 mm

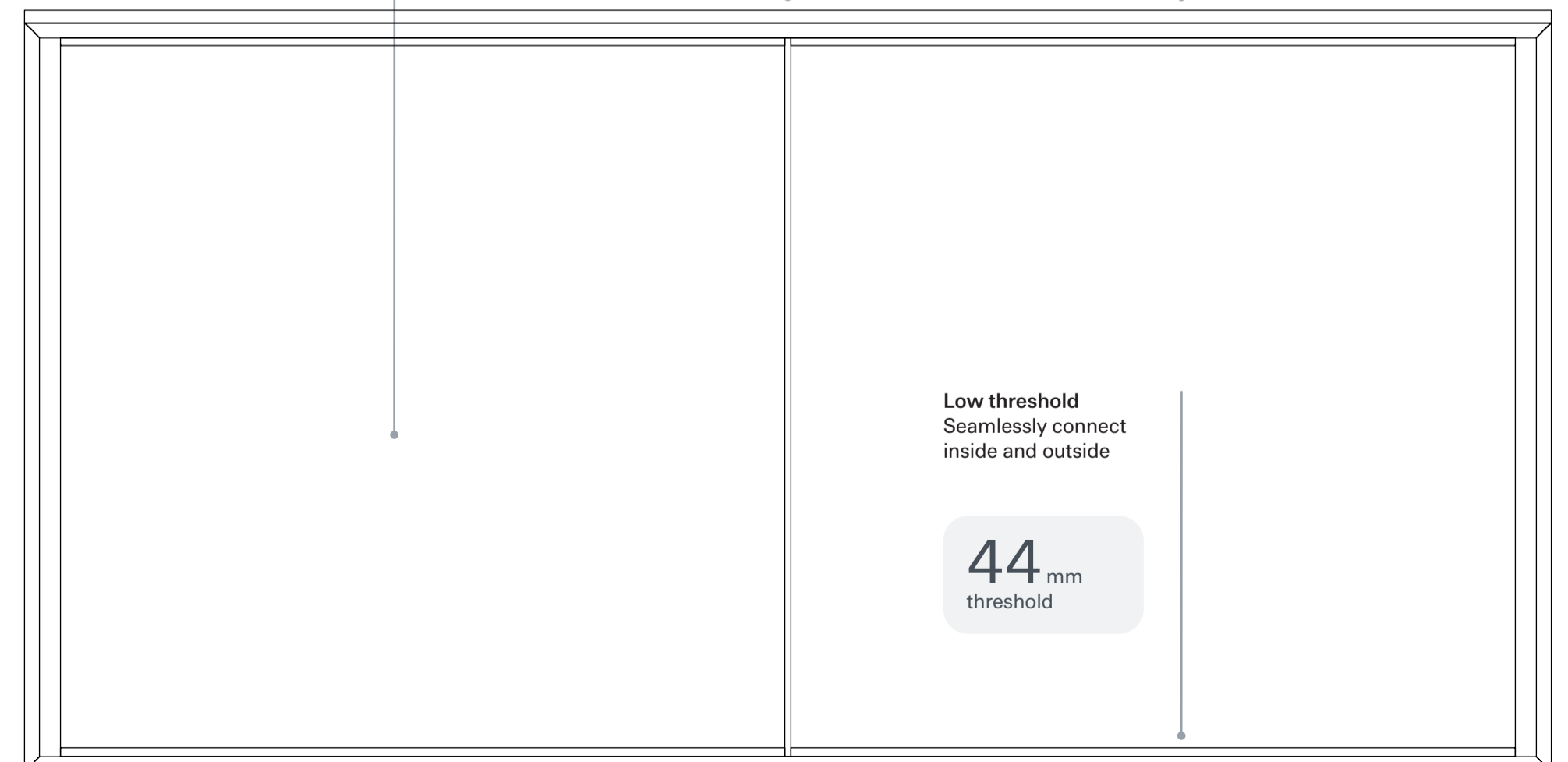
20 mm
sightline

Minimal frame
Construction depth
of only 116 mm

116 mm
frame depth

Low threshold
Seamlessly connect
inside and outside

44 mm
threshold



Design options

RAL powder-coated and metallic finishes

While stunning in its own right, the slimline frame of the S3 may be powder coated in any RAL colour to complement the interior design or external aesthetic of the property. Further more, thanks to the surface properties of high-grade aluminium, finishing options extend to a wide range of metallic powder coatings.

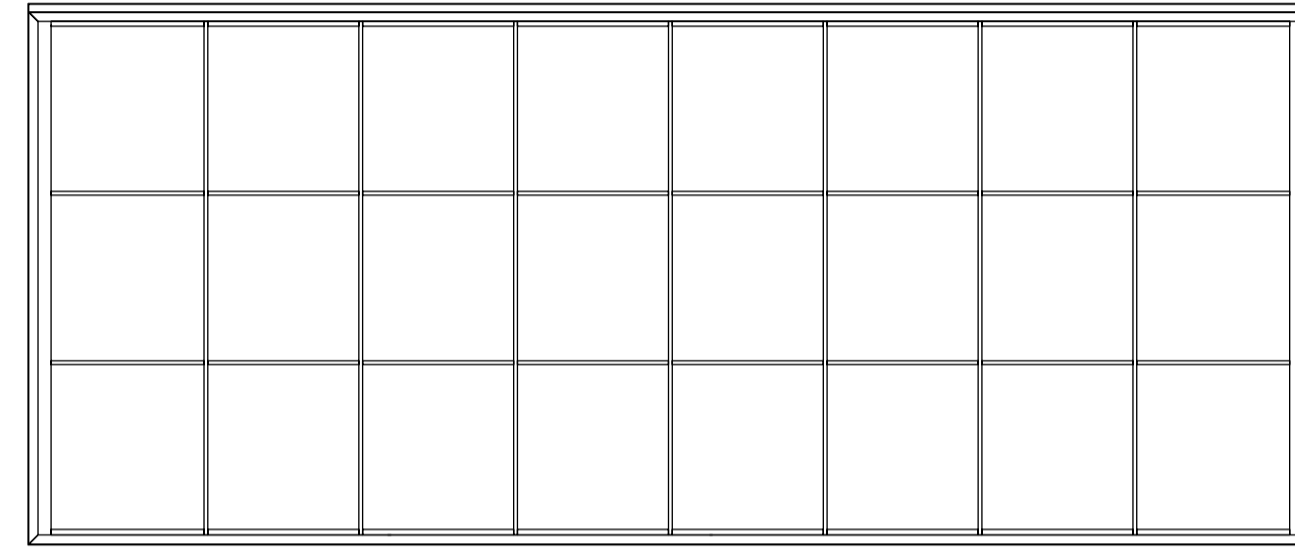
Perla
S3 Sliding Doors
Customisation

Achieve a classic or industrial aesthetic with glazing bars

Glazing bars consist of an aluminium strips fixed to the surface of a duplexed glass unit. The glazing unit is full size, filling the sash or fix. The glazing bars are then applied to the surface in whatever configuration or direction specified. Patterns can be very intricate or designed to match existing or neighbouring buildings.



Your doors, your style
Bottom frames, sashes, meeting points and handles can be finished in a wide range of metallic and classic colour powder-coatings.

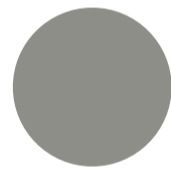


Total design freedom
With horizontal glazing bars of up to one metre, it's possible to design truly unique glazing configurations.

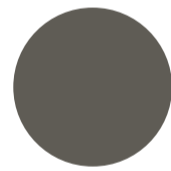
Metallic Powder Coatings



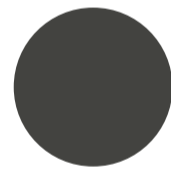
IGP Classic Comet



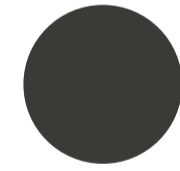
IGP Classic Triton



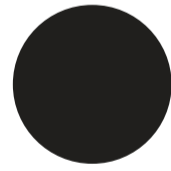
IGP Classic Moon Dust



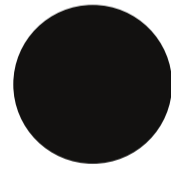
IGP Classic Eruption



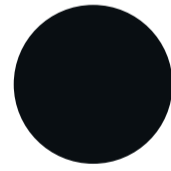
IGP Classic Shooting Star



IGP Classic Galaxy



IGP Classic Meteorite



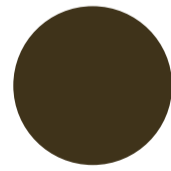
IGP Classic Gravity



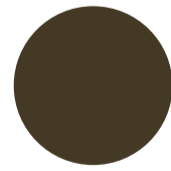
IGP DURA Classic 32



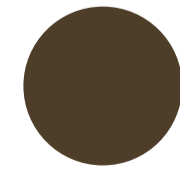
IGP DURA Classic 33



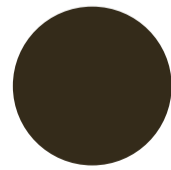
IGP DURA Aged Bronze



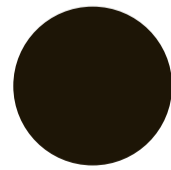
IGP DURA Smooth Carriage



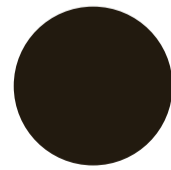
IGP DURA Medium Bronze



IGP DURA Scorpion Shell



IGP DURA Walnut Wood



IGP DURA Classic 34

Colour Powder Coatings



RAL Classic

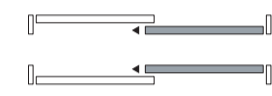
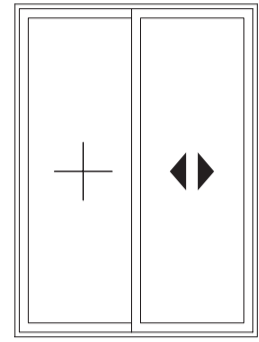


Opening Possibilities

Perla S3 Sliding Doors Opening Possibilities

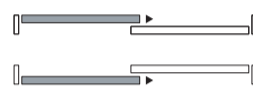
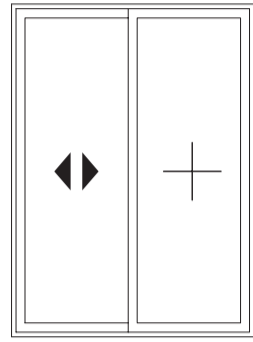
Two Rail Frame

1 Sash door

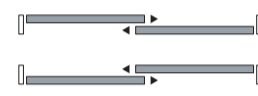
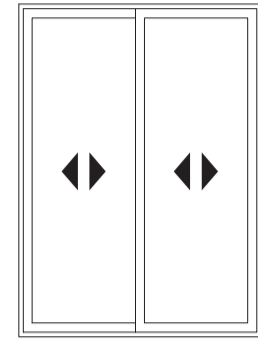


Max sash dimensions
4400 mm (w) × 3000 mm (h)

2 Sashes door



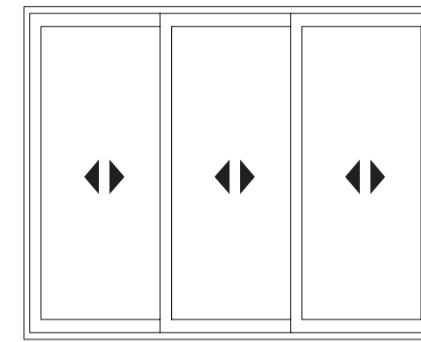
Max sash dimensions
4400 mm (w) × 3000 mm (h)



Max sash dimensions
4400 mm (w) × 3000 mm (h)

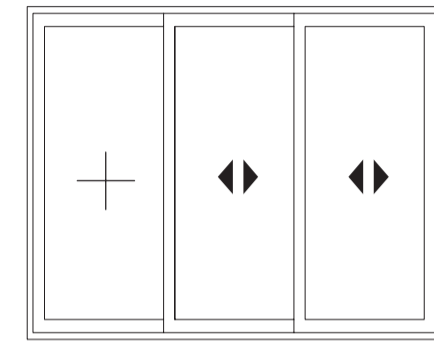
Three Rail Frame

3 Sashes door



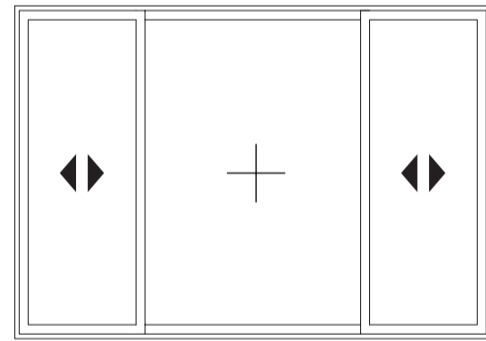
Max sash dimensions
4400 mm (w) × 3000 mm (h)

2 Sashes door with lateral fixed light



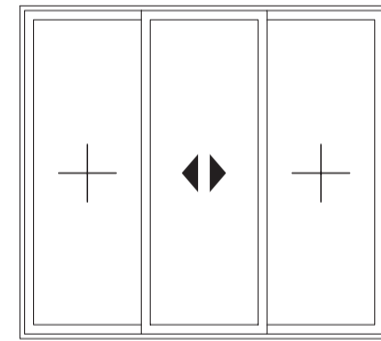
Max sash dimensions
4400 mm (w) × 3000 mm (h)

2 Sashes door with central fixed light



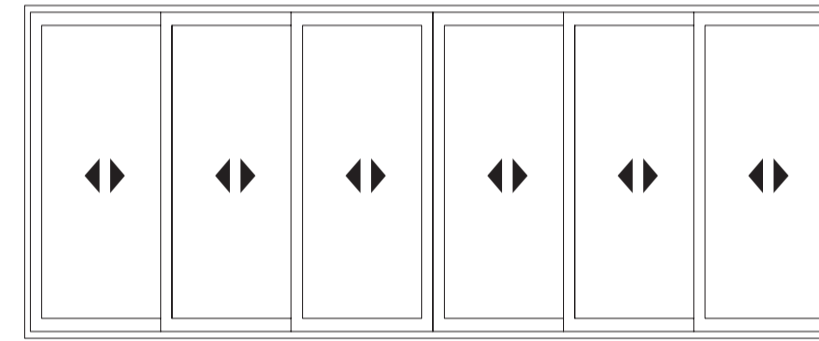
Max sash dimensions
4400 mm (w) × 3000 mm (h)

1 Sash door with 2 lateral fixed lights



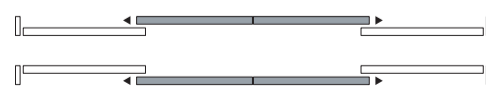
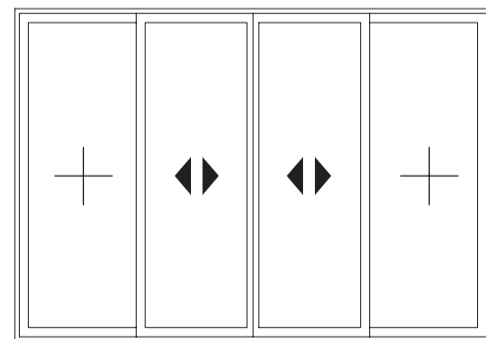
Max sash dimensions
4400 mm (w) × 3000 mm (h)

6 Sashes door



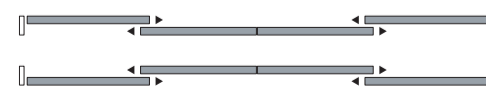
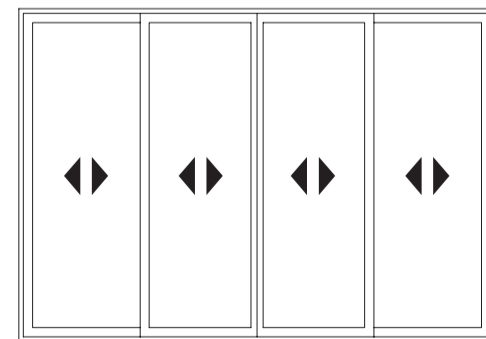
Max sash dimensions
4400 mm (w) × 3000 mm (h)

2 Sashes door with 2 lateral fixed lights



Max sash dimensions
4400 mm (w) × 3000 mm (h)

1 Sashes door

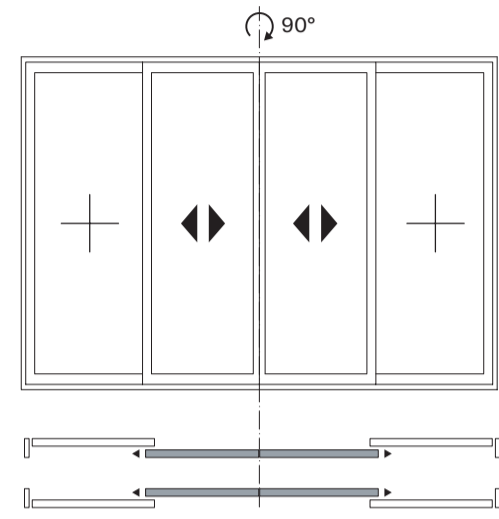


Max sash dimensions
4400 mm (w) × 3000 mm (h)

Opening Possibilities

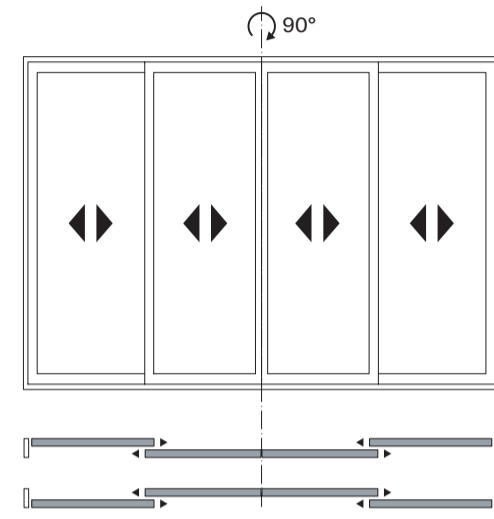
Corner Joint Profile

2 Sashes door with 2 lateral fixed lights



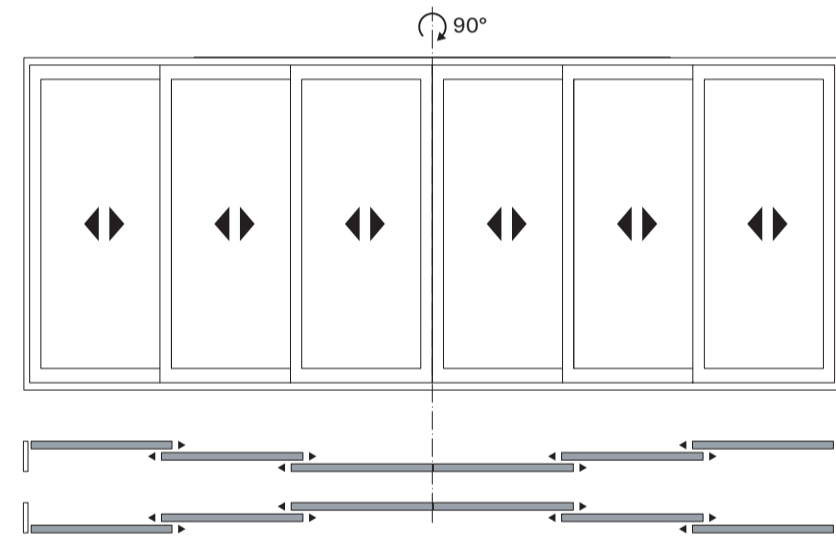
Max sash dimensions
4400 mm (w) × 3000 mm (h)

4 Sashes door



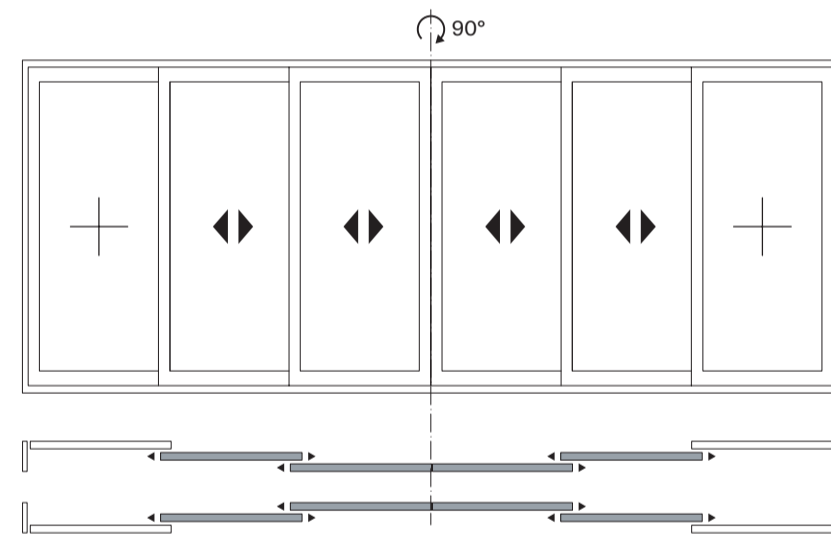
Max sash dimensions
4400 mm (w) × 3000 mm (h)

6 Sashes door



Max sash dimensions
4400 mm (w) × 3000 mm (h)

4 Sashes door with 2 lateral fixed lights

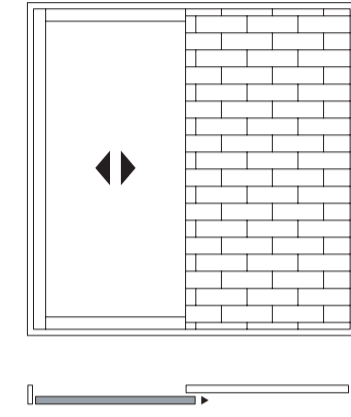


Max sash dimensions
4400 mm (w) × 3000 mm (h)

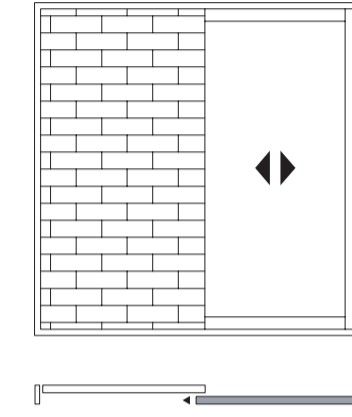
Perla S3 Sliding Doors Opening Possibilities

Galandage System

1 Sash door

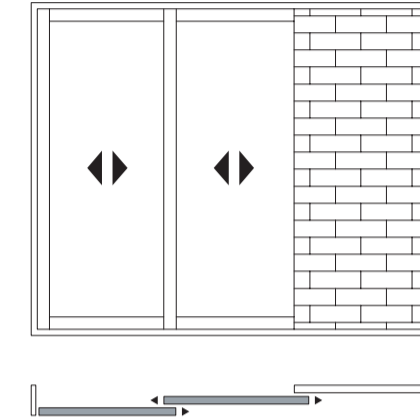


Max sash dimensions
4400 mm (w) × 3000 mm (h)

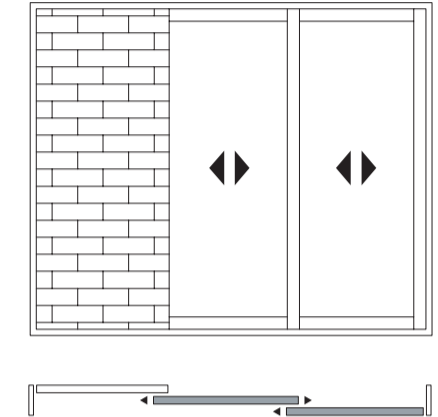


Max sash dimensions
4400 mm (w) × 3000 mm (h)

2 Sashes door

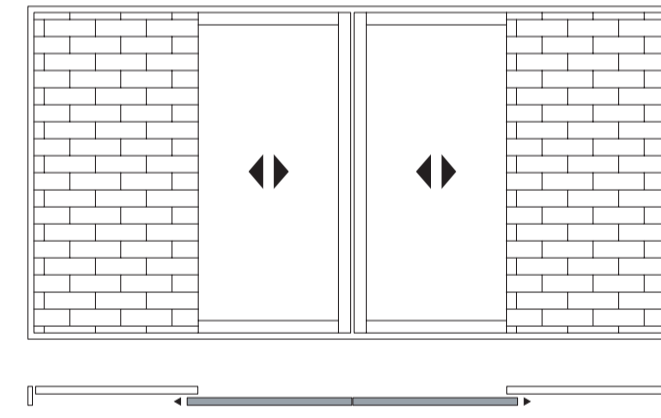


Max sash dimensions
4400 mm (w) × 3000 mm (h)



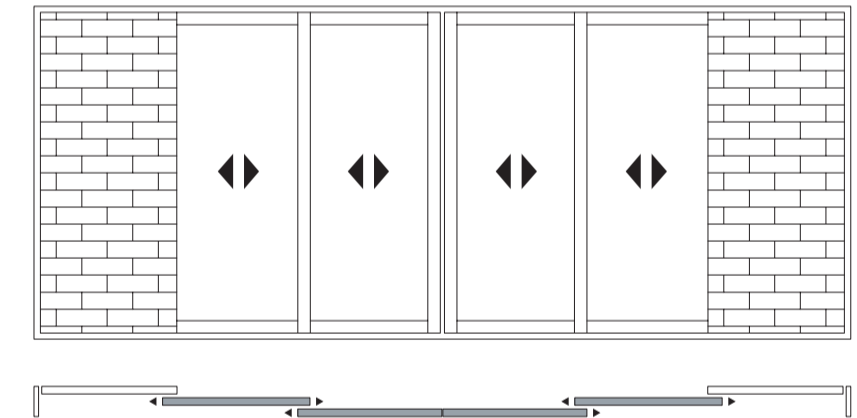
Max sash dimensions
4400 mm (w) × 3000 mm (h)

2 Sashes door



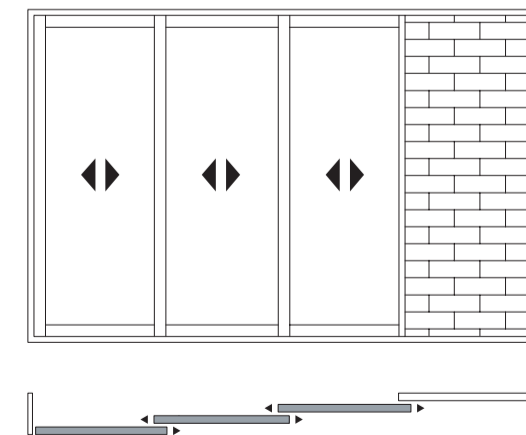
Max sash dimensions
4400 mm (w) × 3000 mm (h)

4 Sashes door

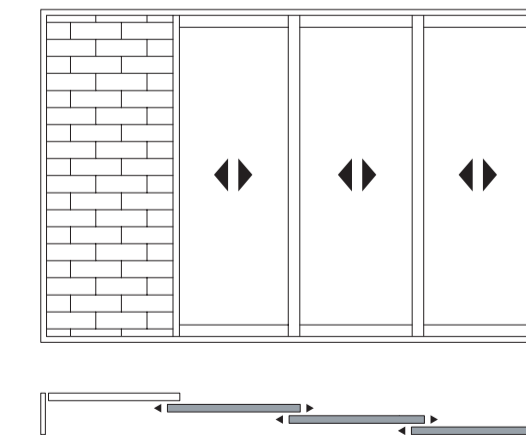


Max sash dimensions
4400 mm (w) × 3000 mm (h)

3 Sashes door



Max sash dimensions
4400 mm (w) × 3000 mm (h)



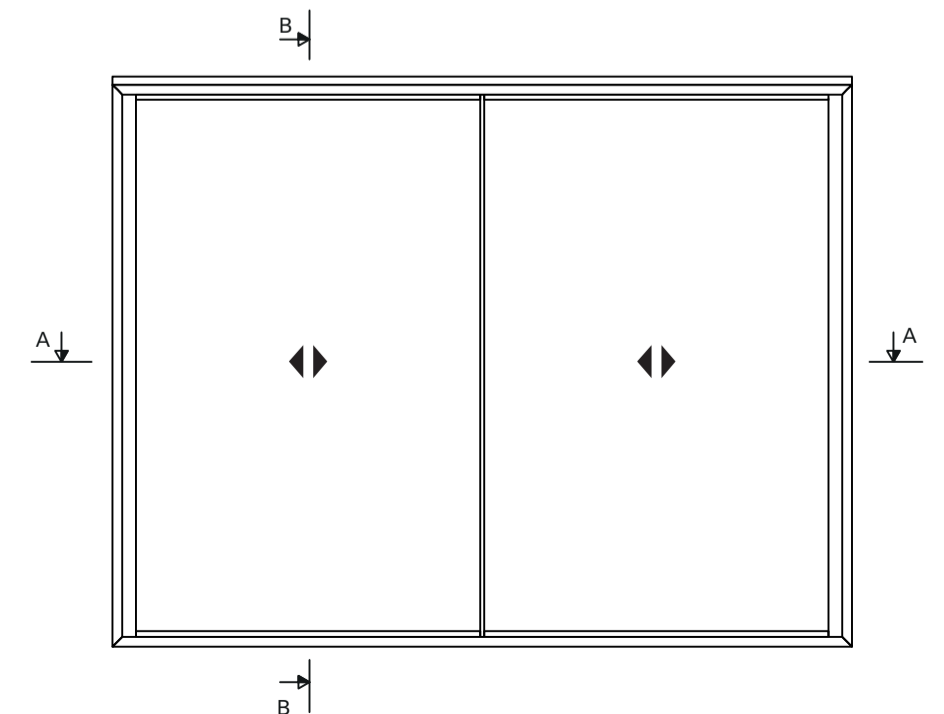
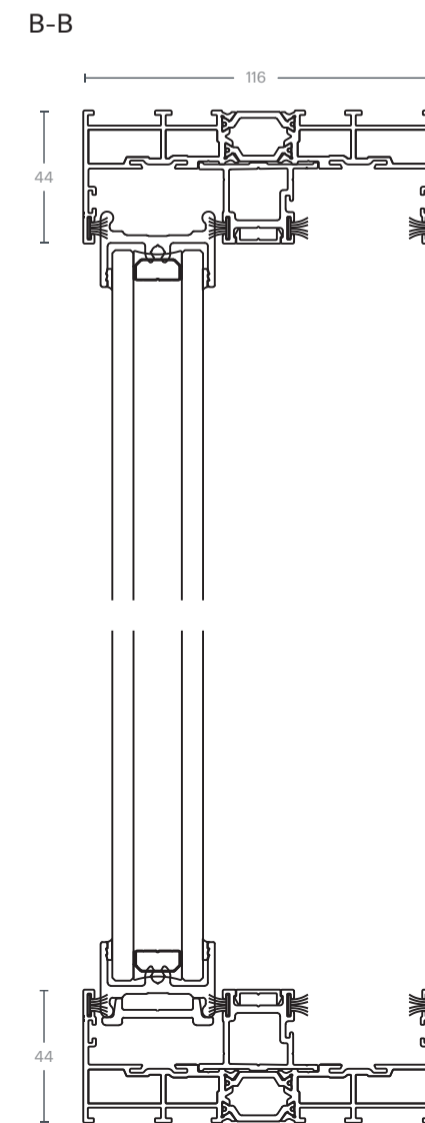
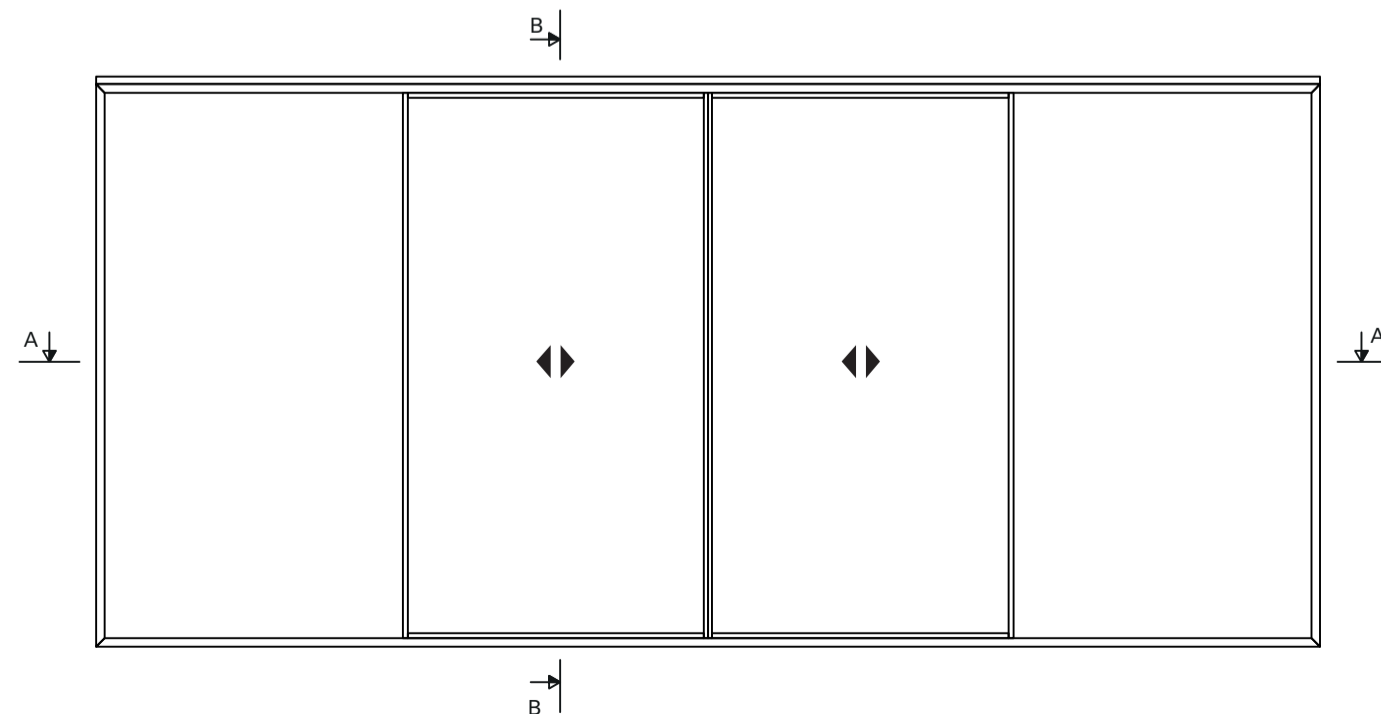
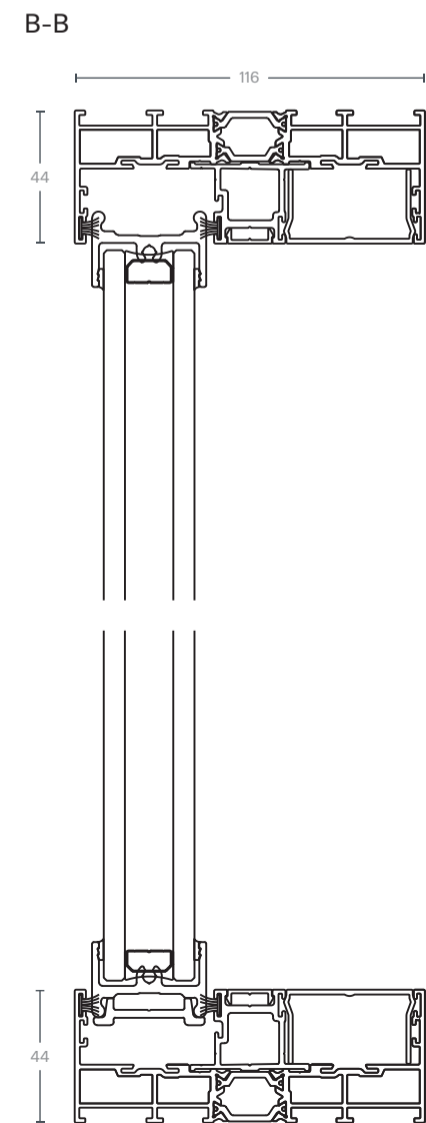
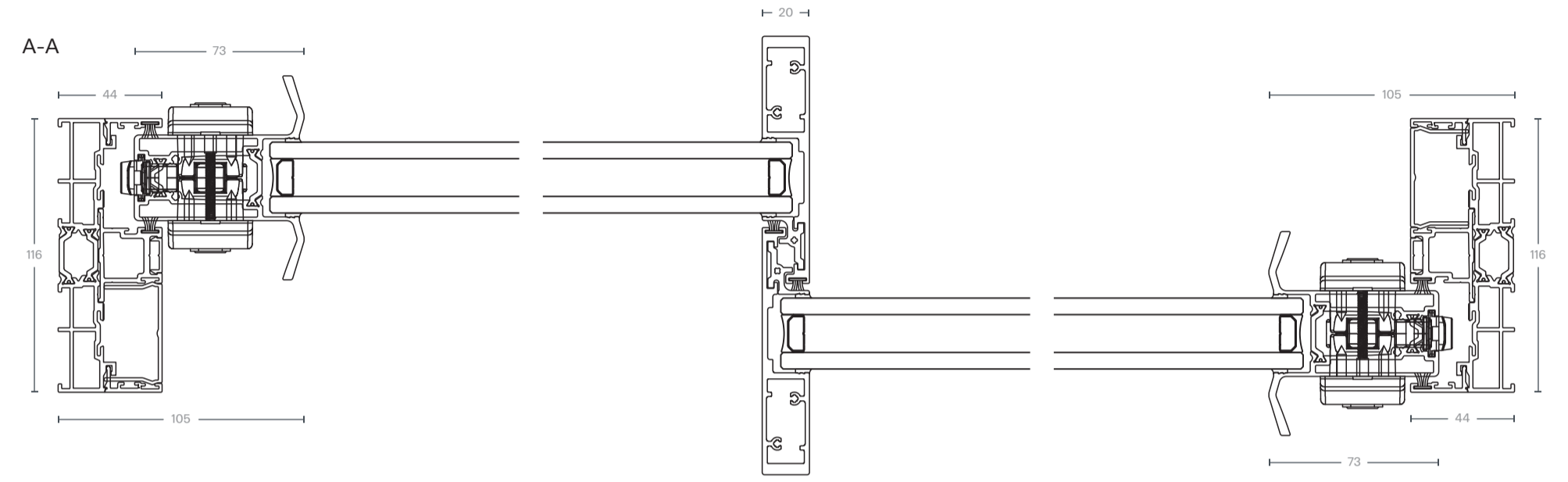
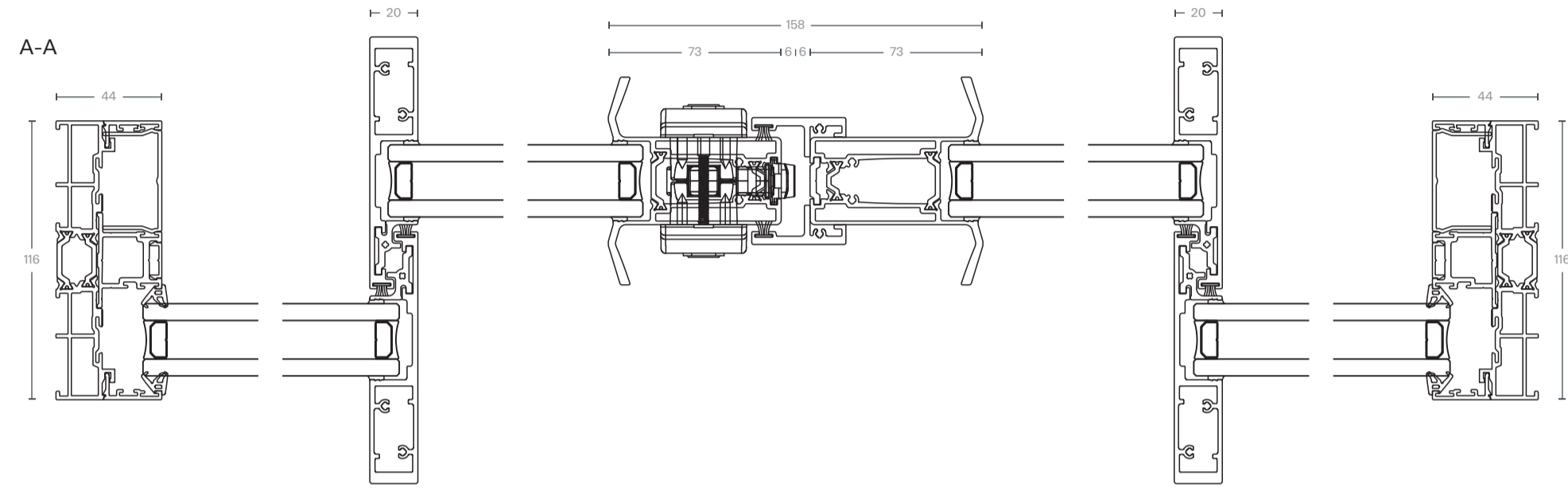
Max sash dimensions
4400 mm (w) × 3000 mm (h)

Double Rail Frame
Eurocylinder Lock

Perla
S3 Sliding Doors
Example Drawings

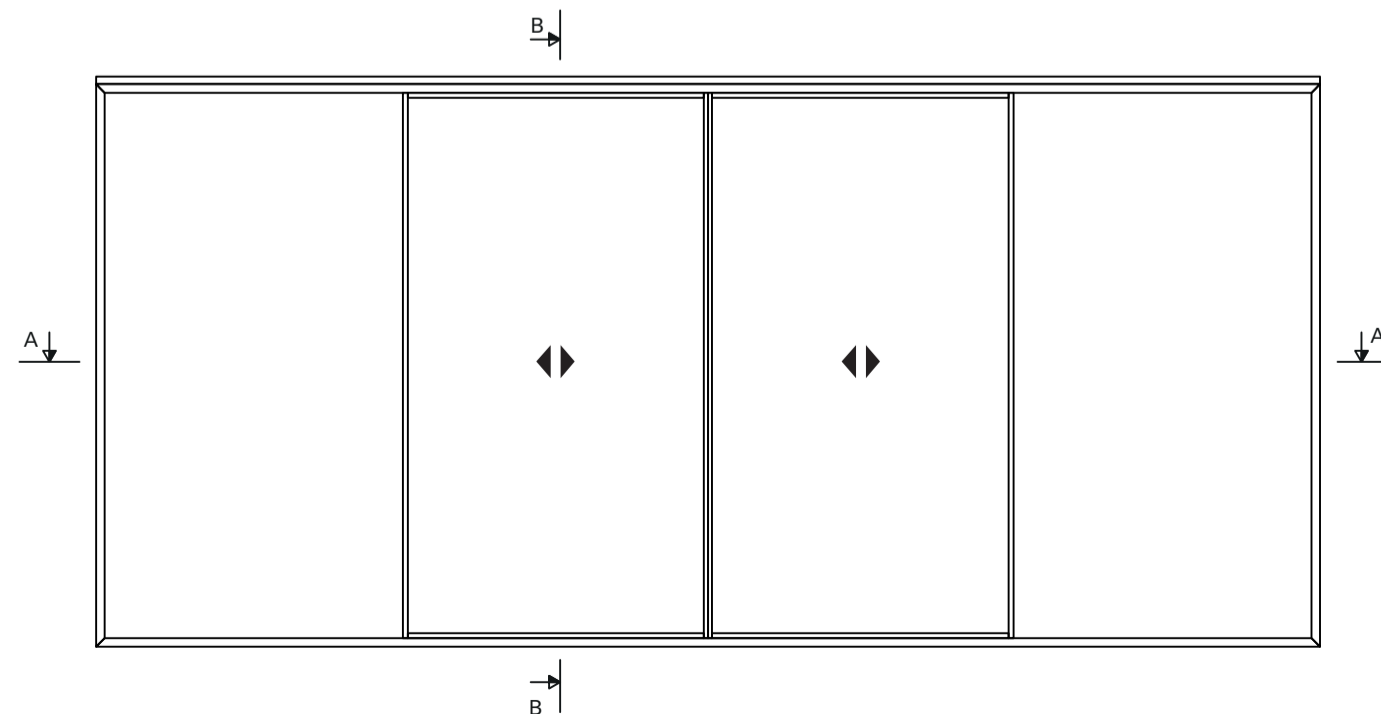
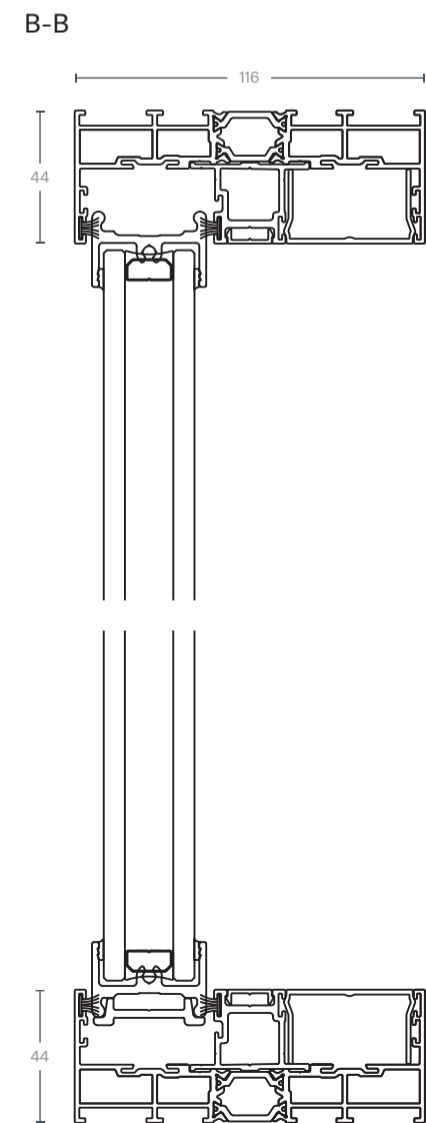
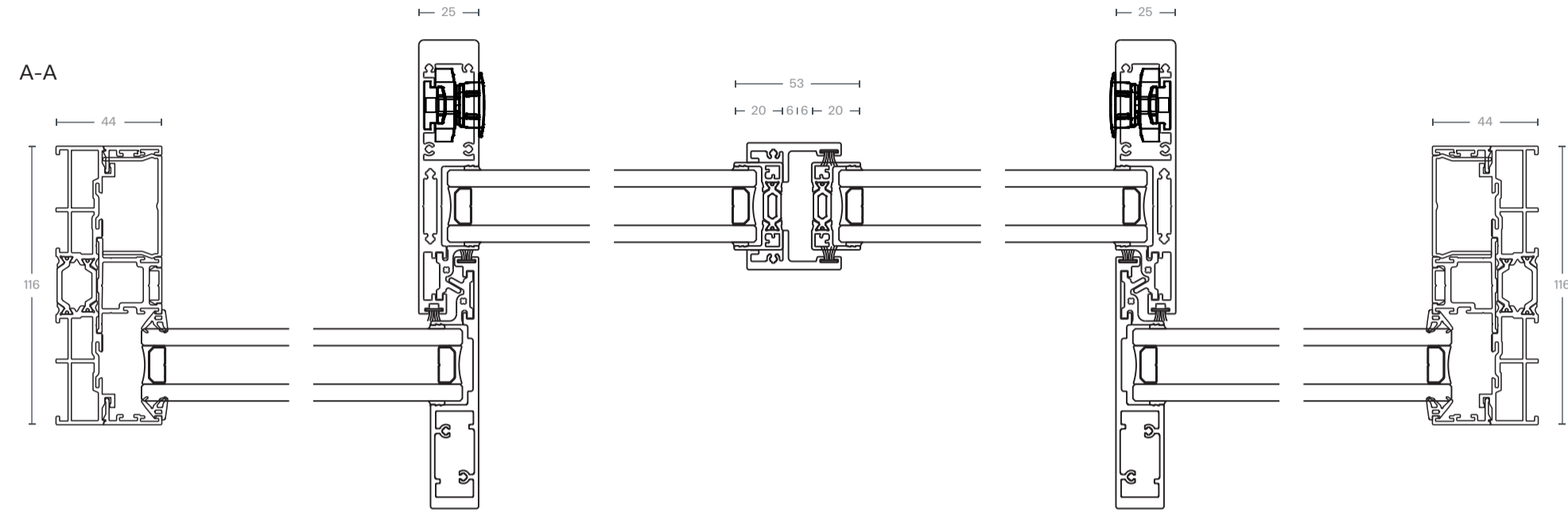
Double Rail Frame
Eurocylinder Lock

Perla
S3 Sliding Doors
Example Drawings



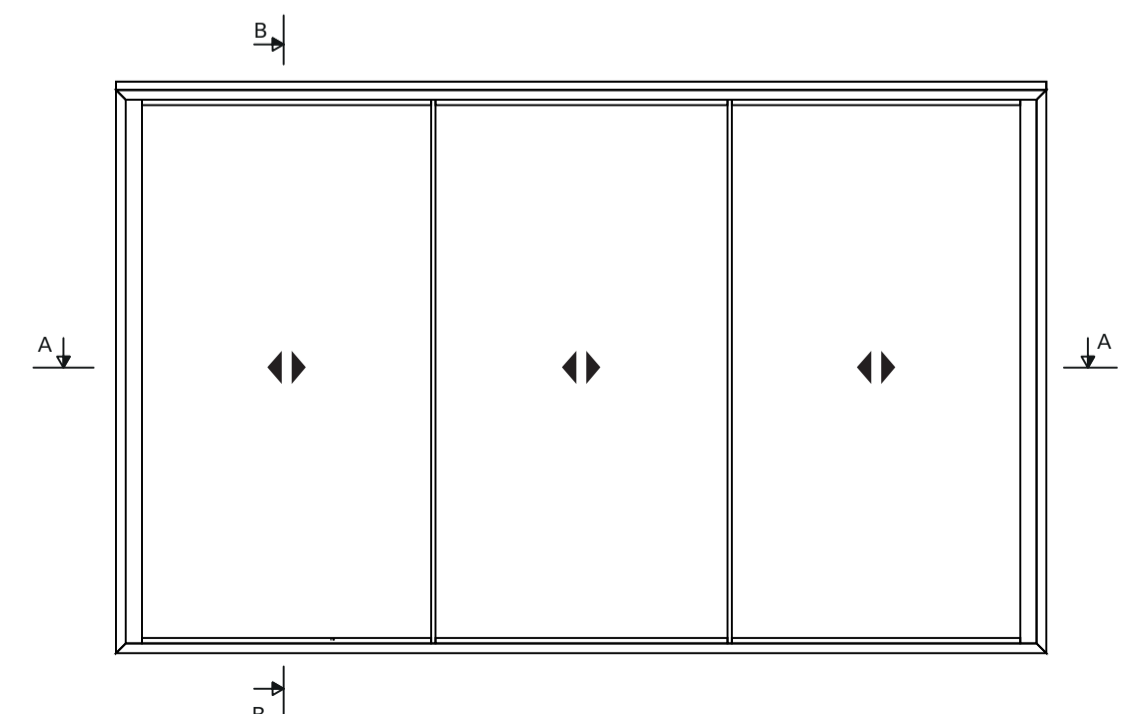
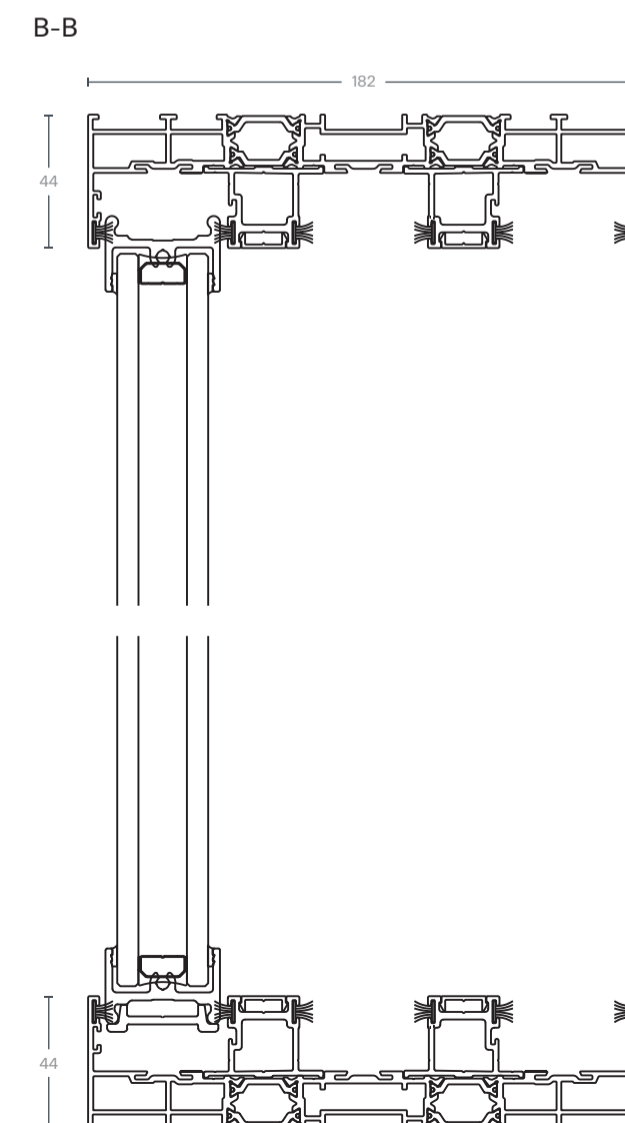
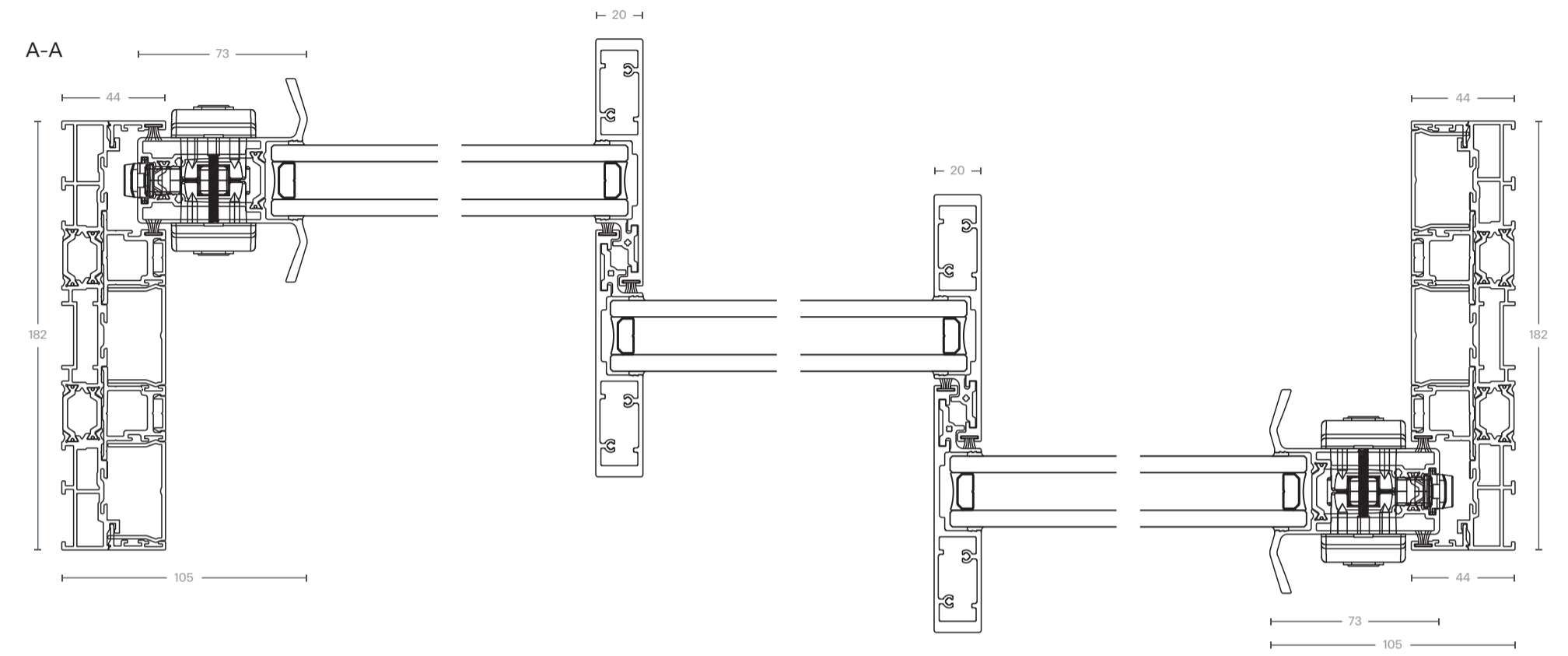
Double Rail Frame
Internal Lock

Perla
S3 Sliding Doors
Example Drawings



Triple Rail Frame
Eurocylinder Lock

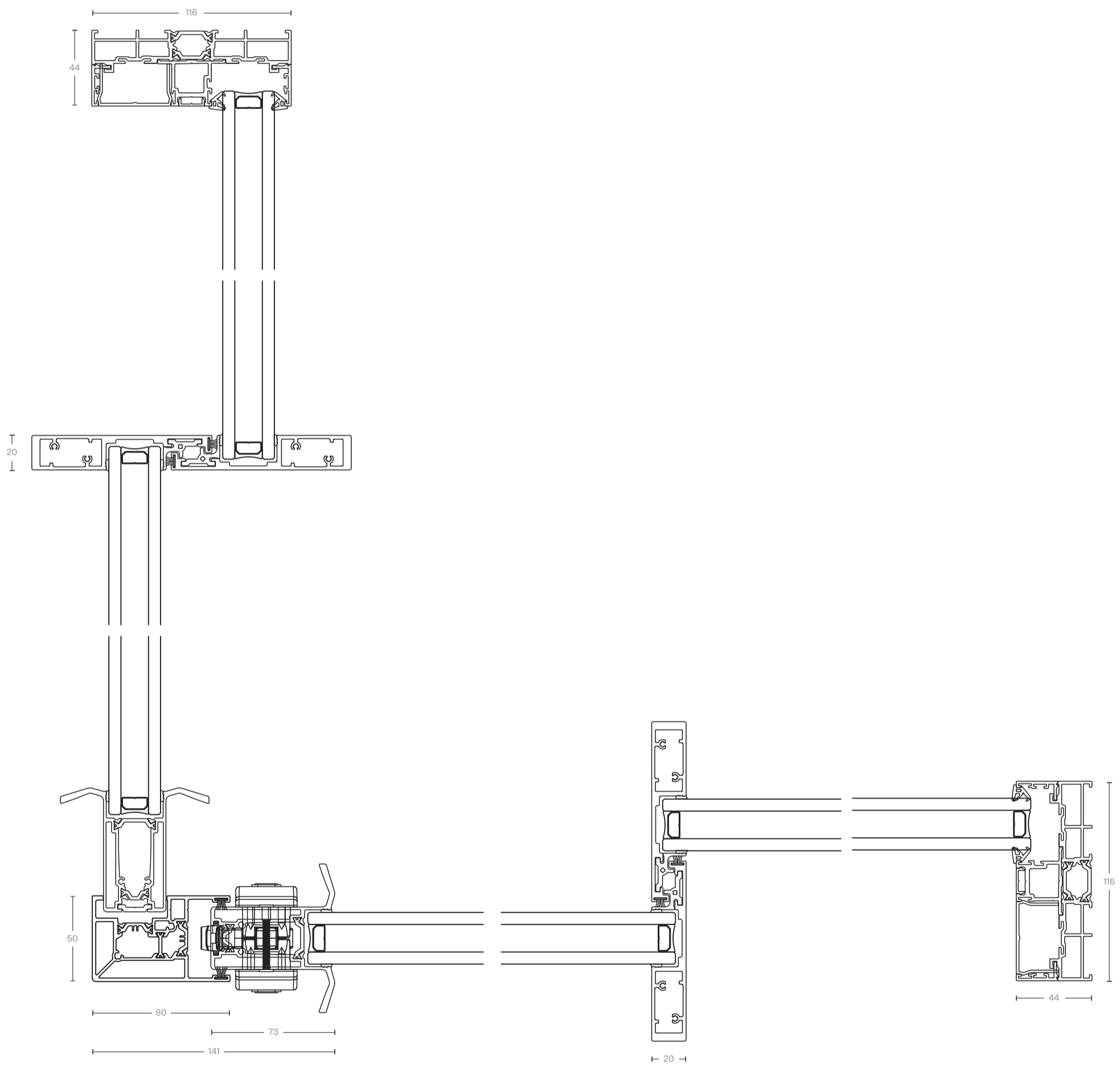
Perla
S3 Sliding Doors
Example Drawings



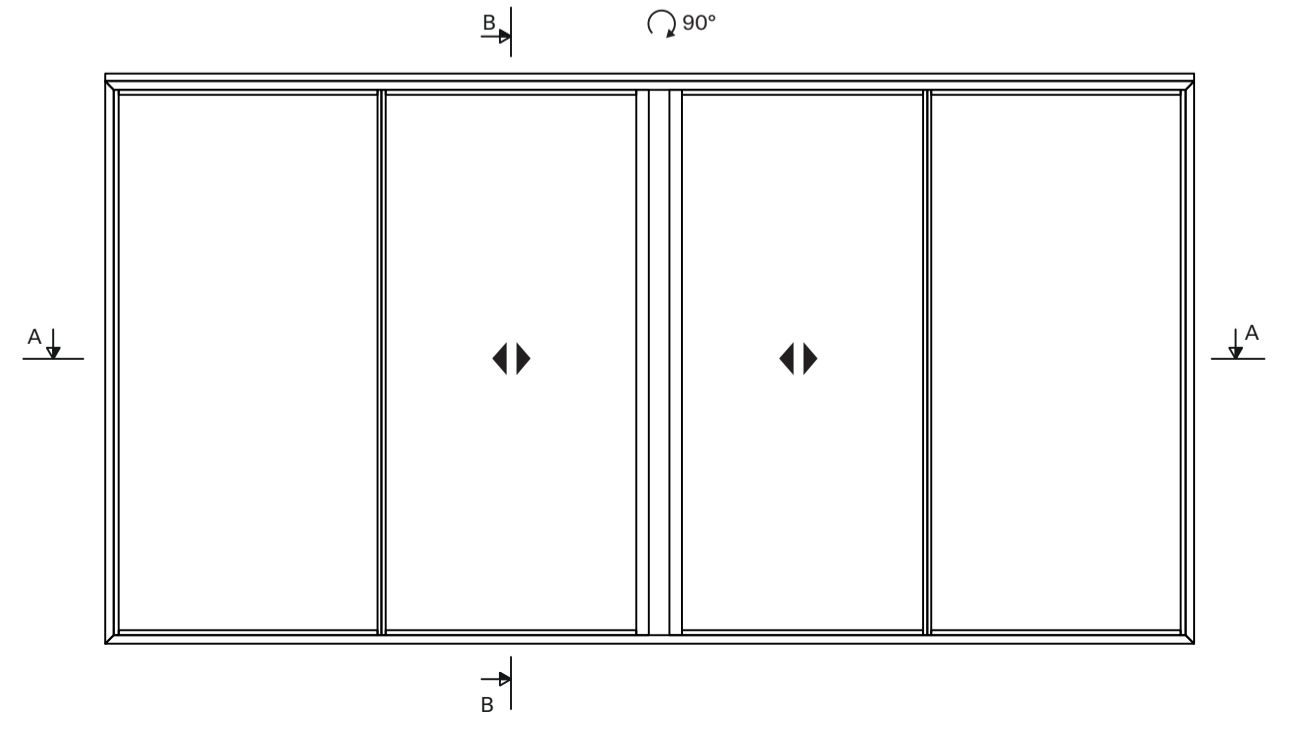
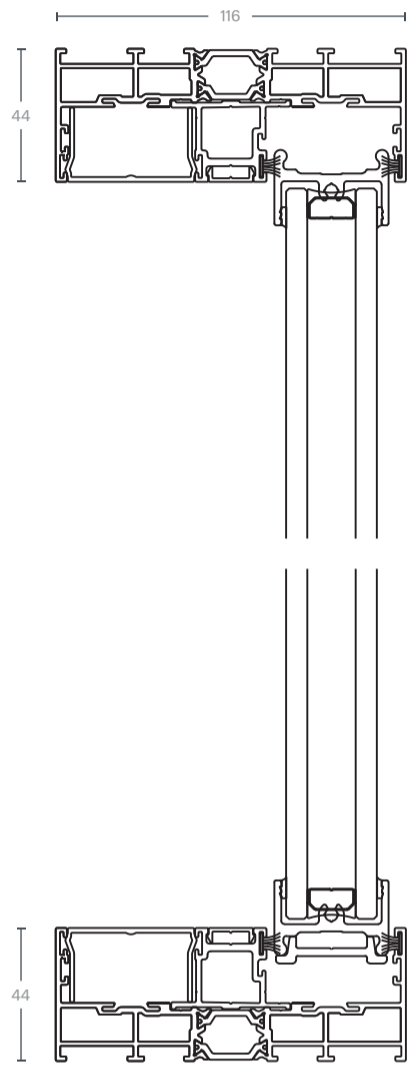
Corner Profile
Eurocylinder Lock

Perla
S3 Sliding Doors
Example Drawings

A-A



B-B



We reserve the right to make technical improvements or modifications of any type even during the validity of this catalogue without prior notice to the customer. Perla Windows Limited takes no liability for misprints or mistakes in scale reproductions. No part of this catalogue may be published, distributed, extracted, reused or reproduced in any form except under written permission by Perla Windows Limited. Technical drawings are for guidance only and must be studied and verified from a mechanical, functional and static point of view, relieving the companies of every responsibility of any kind.

Published 04.2025. Subject to change.



Perla Windows Limited
Unit 2, 8 Greenock Road
Acton Industrial Estate
London W3 8DU UK

T +44 0 203 906 1776
E info@perlawindows.com

www.perlawindows.com



Find out more and be inspired