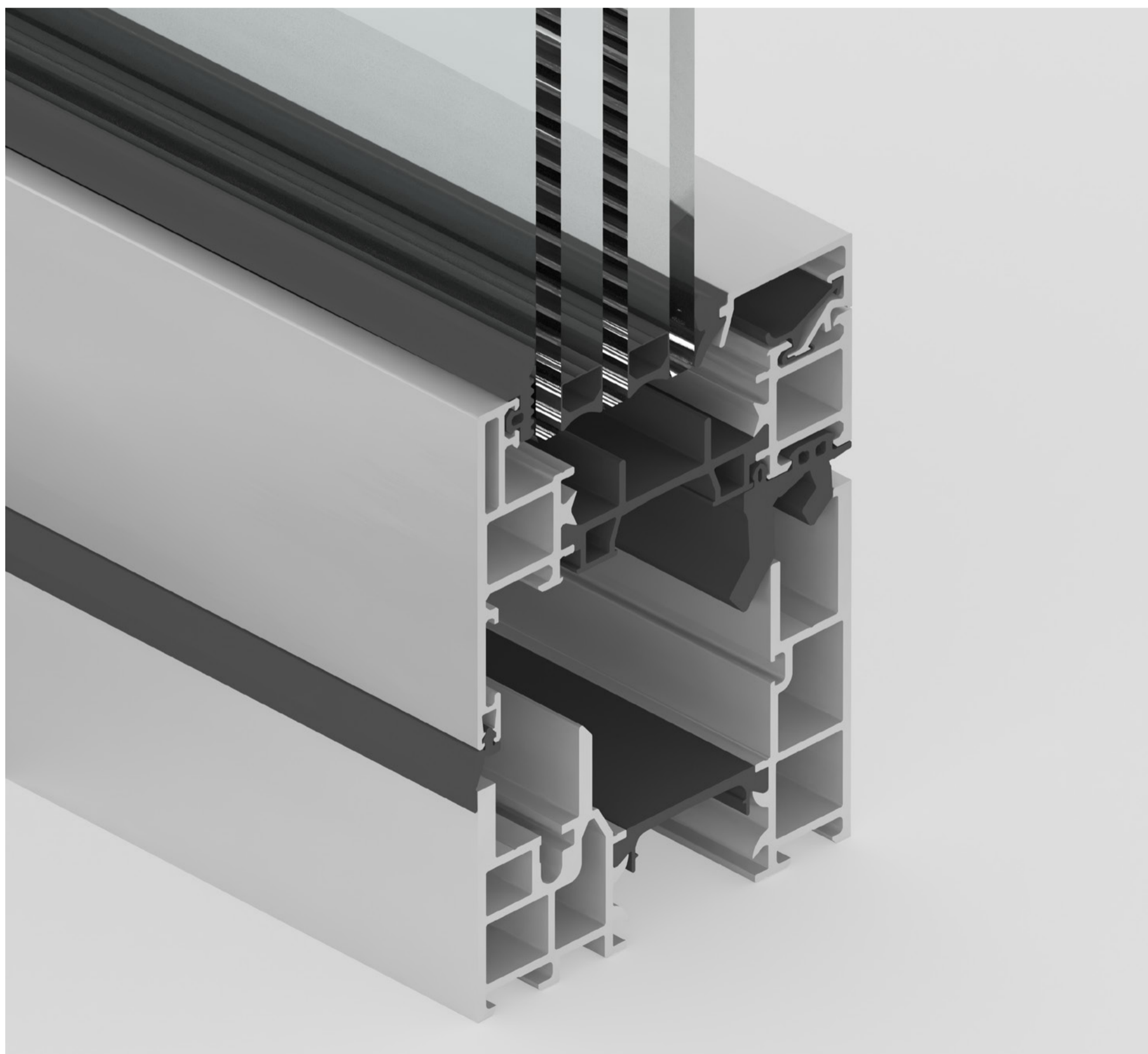


Bifold Doors

# B2



Slimline aluminium bifold doors  
designed for maximum luminosity



# B2 Bifold Doors

## Bring the outside in with limitless design freedom

The Perla B2 sliding door system combines sleek sliding functionality with expansive glass façades, delivering exceptional transparency and modern appeal. Its flush frame design, minimal visible joints, and slim 90 mm sightlines create a clean, architectural aesthetic that integrates seamlessly into any structure. The system supports large vent sizes, multiple opening types, and three threshold options, offering excellent planning flexibility. A variety of opening and locking configurations ensures ease of use and adaptability, while the integrated side-hung vent provides convenient everyday access. With generous opening widths, the Perla B2 system creates a smooth connection between interior and exterior spaces.



### Features



**uValue from 0.8 W/(m<sup>2</sup>K)**  
Most energy efficient bifold door system available



**Up to 3.5m Vent Height**  
Largest slimline bifold door system on the market



**Range of Finishes**  
RAL Classic, metallic or anodised finishes.



**Sound Insulation**  
Cancels out exterior noise up to 47 dB



**Thermal Barrier**  
Composite thermal insulation system



**Burglary Resistance**  
Security tested to RC 2/PAS 24



**Wind Resistance**  
Certified Class B4 to meet EN 12210



**Air Permeability**  
Certified Class 4 to meet EN 12207



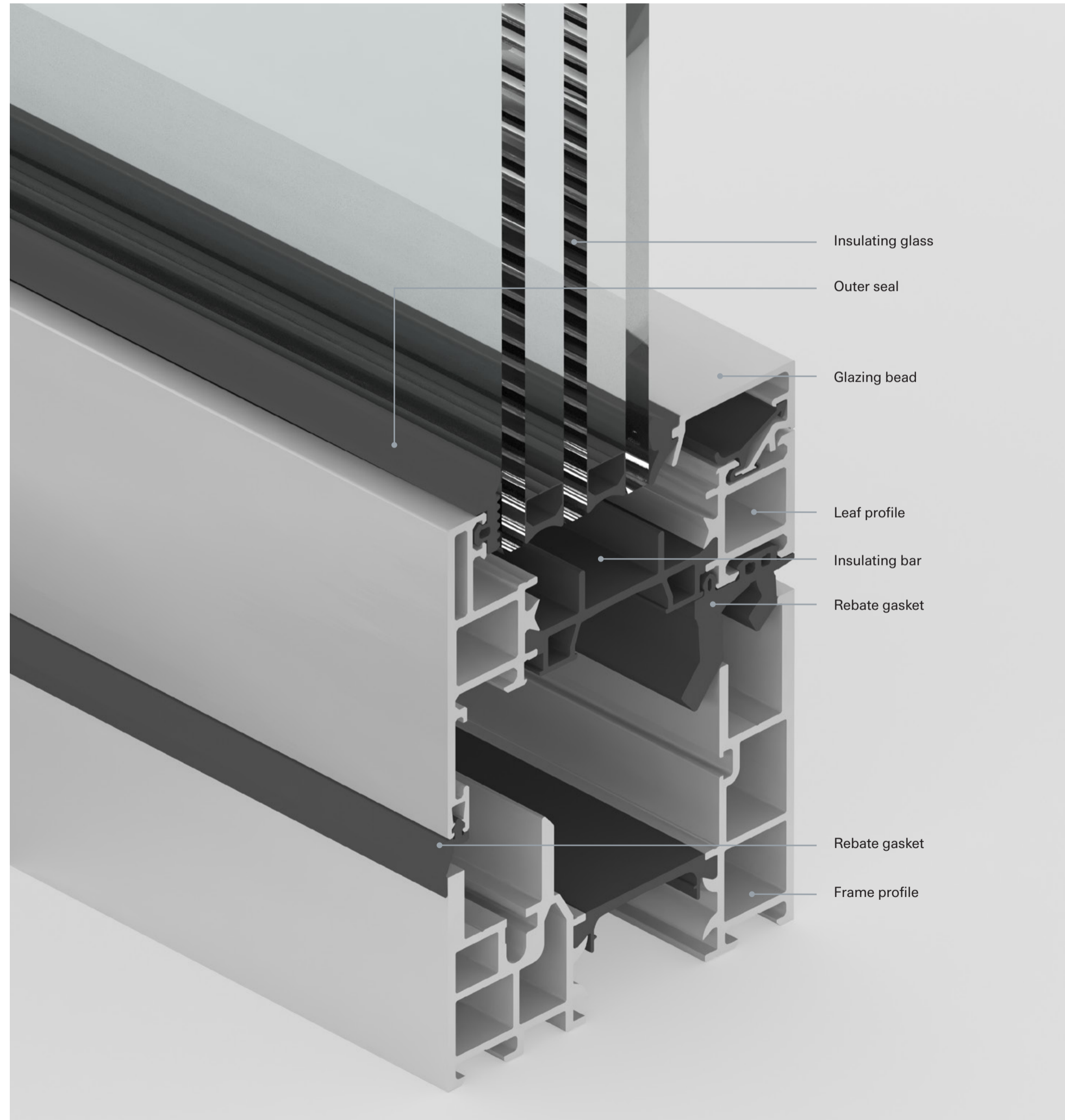
**Water Tightness**  
Certified Class 9A to meet EN 12208

# Overview

Perla  
Slimline Bifold Doors  
System overview

## Minimalist design meets exceptional engineering

1. Slim sightlines:  
Frame and sash at just 90 mm
2. Durable profiles:  
Strong 2.3 mm thickness
3. Polyamide strip insulation:  
Frame 20 mm, leaf 30 mm
4. Versatile glazing:  
Supports 25–65 mm thickness
5. Flexible opening options:  
Inward or outward, up to 14 sashes
6. Seamless corner design:  
90° corner sash without a mullion
7. Three threshold options  
4 mm, 15 mm, and 71 mm for minimal trip hazards, easy access, and maximum weather tightness.



### Minimal sightlines

With a construction depth of 90 mm, the face width of the leaf and frame profile is just 41 mm, adding up to 90 mm in the face plate.

90 mm  
profile depth

90 mm  
face plate

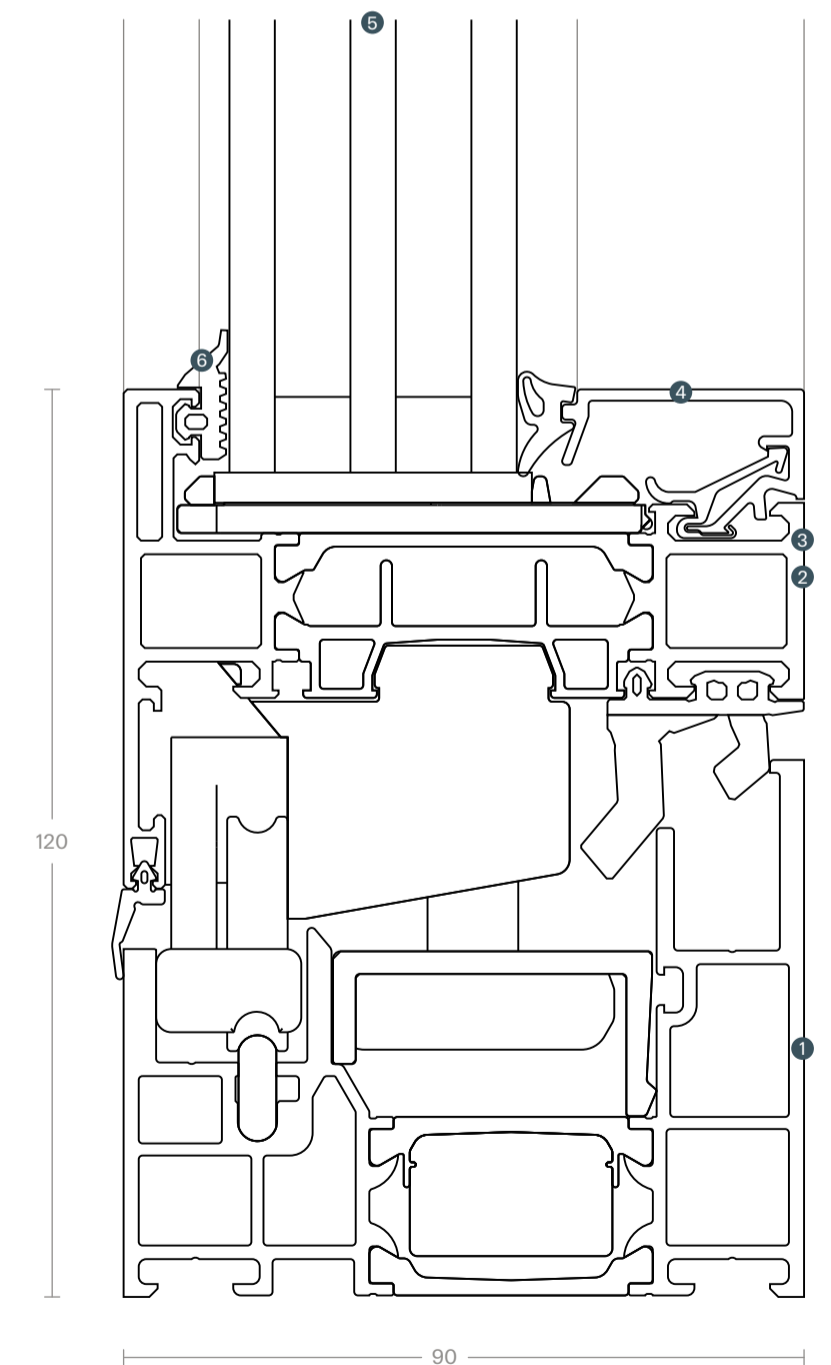
### Maximum dimensions

Element sizes of up to 1500 mm width x 3500 mm height per leaf (max. 150 kg leaf weight)

150 cm  
max. leaf width

350 cm  
max. leaf height

150 kg  
max. leaf weight



Drawing scale 1:1

# Design options

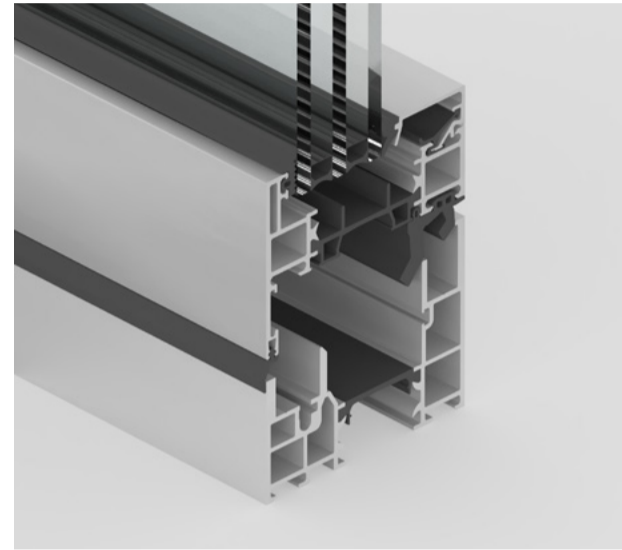
## RAL powder-coated and metallic finishes

While stunning in its own right, the slimline frame of the B2 may be powder coated in any RAL colour to complement the interior design or external aesthetic of the property. Further more, thanks to the surface properties of high-grade aluminium, finishing options extend to a wide range of metallic powder coatings.

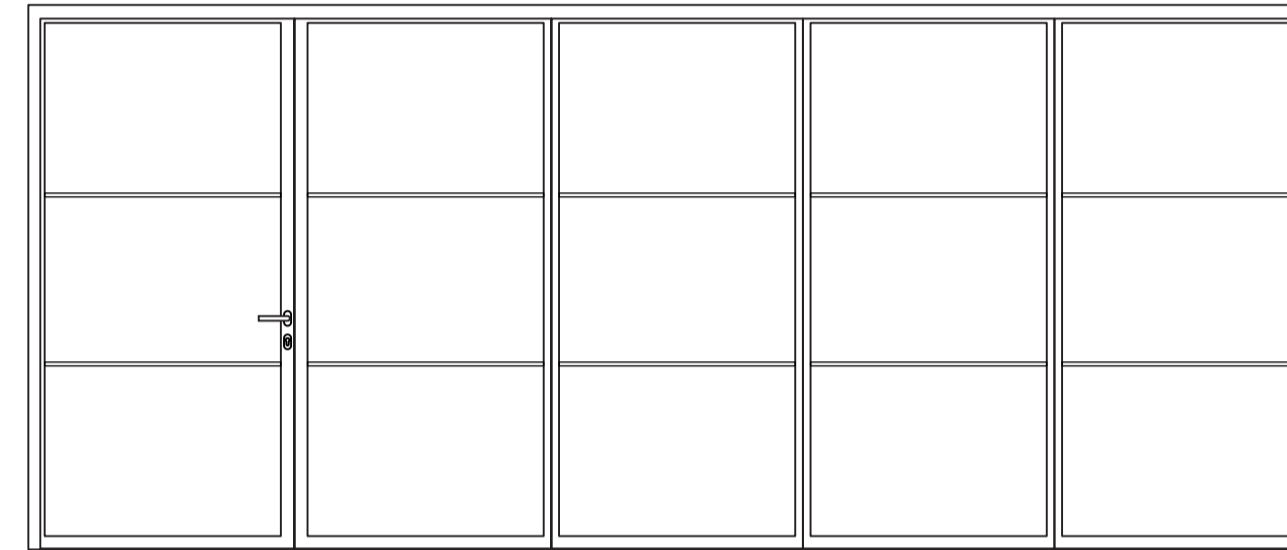
Perla  
B2 Bifold Doors  
System overview

## Achieve a classic or industrial aesthetic with glazing bars

Glazing bars consist of an aluminium strips fixed to the surface of a duplexed glass unit. The glazing unit is full size, filling the sash or fix. The glazing bars are then applied to the surface in whatever configuration or direction specified. Patterns can be very intricate or designed to match existing or neighbouring buildings.



**Your doors, your style**  
Bottom frames, sashes, meeting points and handles can be finished in a wide range of metallic and classic colour powder-coatings.

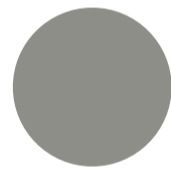


**Total design freedom**  
With the additional option of applying horizontal glazing bars, it's possible to design truly unique glazing configurations.

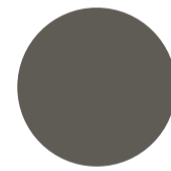
### Metallic Powder Coatings



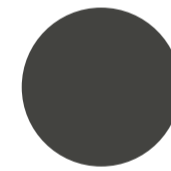
IGP Classic Comet



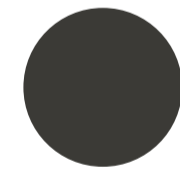
IGP Classic Triton



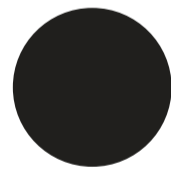
IGP Classic Moon Dust



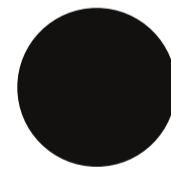
IGP Classic Eruption



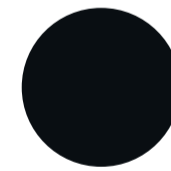
IGP Classic Shooting Star



IGP Classic Galaxy



IGP Classic Meteorite



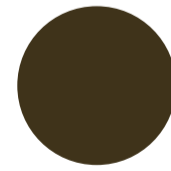
IGP Classic Gravity



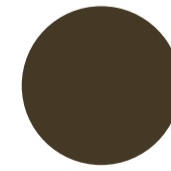
IGP DURA Classic 32



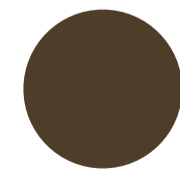
IGP DURA Classic 33



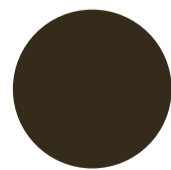
IGP DURA Aged Bronze



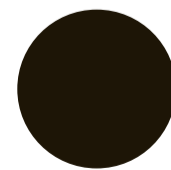
IGP DURA Smooth Carriage



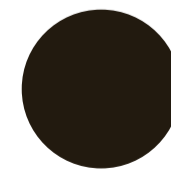
IGP DURA Medium Bronze



IGP DURA Scorpion Shell



IGP DURA Walnut Wood



IGP DURA Classic 34

### Colour Powder Coatings



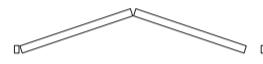
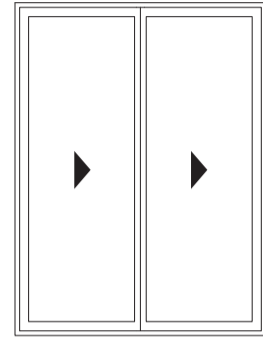
RAL Classic



# Opening Possibilities

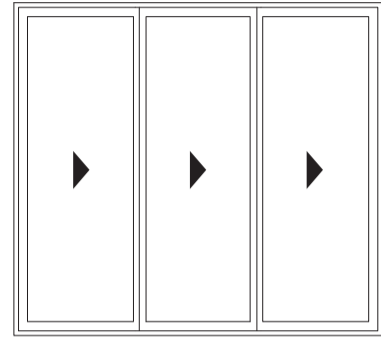
# Perla B2 Bifold Doors Opening Possibilities

2+0



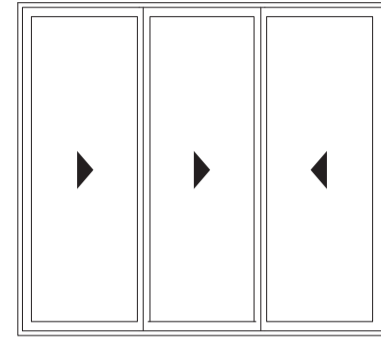
Max. leaf dimensions  
1500 mm (w) x 3500 mm (h)

3+0



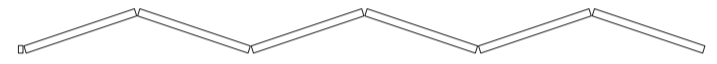
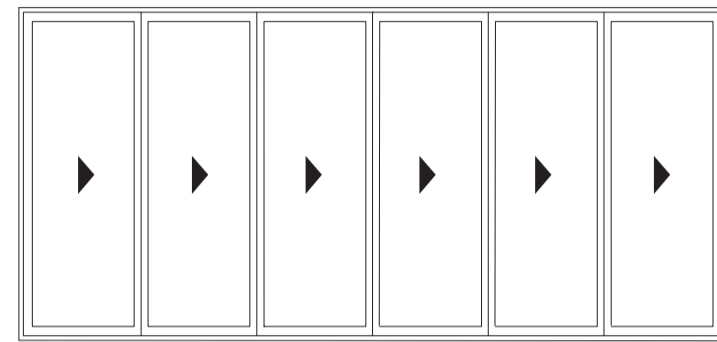
Max leaf dimensions  
1500 mm (w) x 3500 mm (h)

2+1



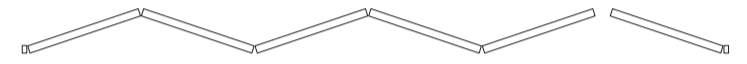
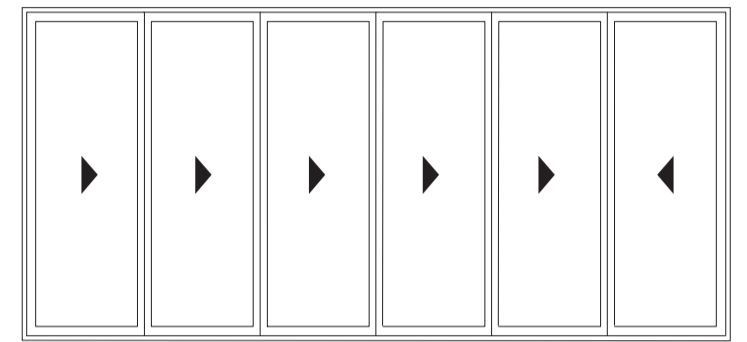
Max leaf dimensions  
1500 mm (w) x 3500 mm (h)

6+0



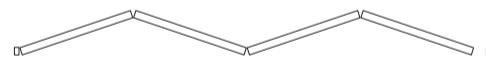
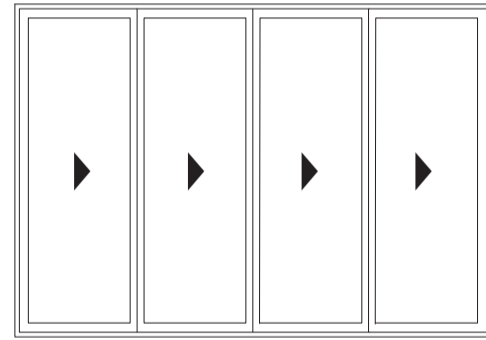
Max. leaf dimensions  
1500 mm (w) x 3500 mm (h)

5+1



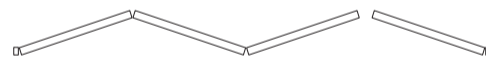
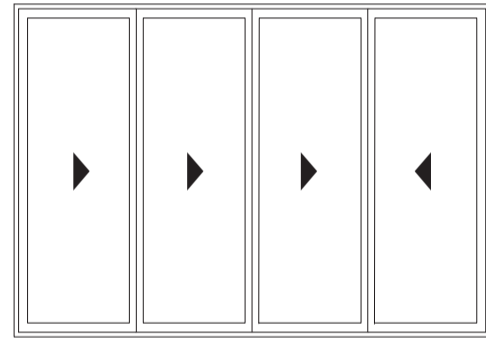
Max. leaf dimensions  
1500 mm (w) x 3500 mm (h)

3+0



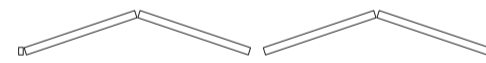
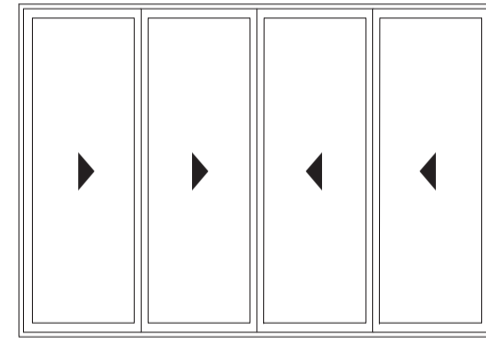
Max. leaf dimensions  
1500 mm (w) x 3500 mm (h)

3+1



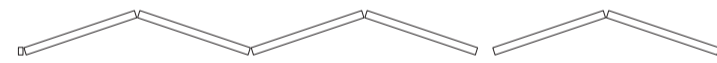
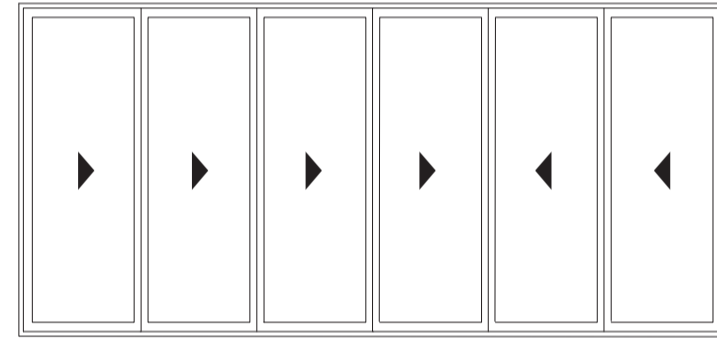
Max leaf dimensions  
1500 mm (w) x 3500 mm (h)

2+2



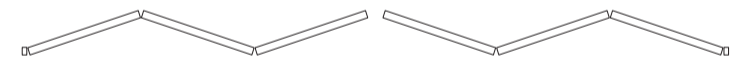
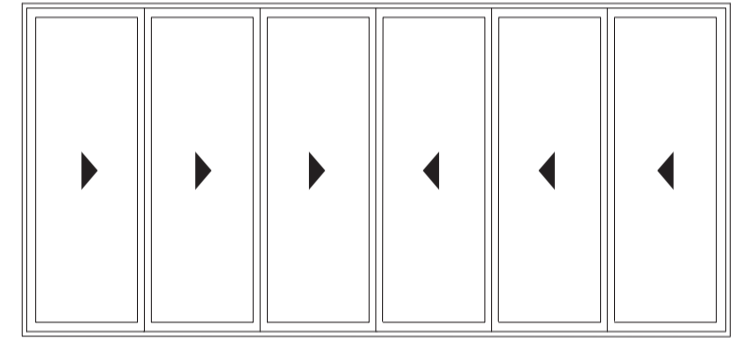
Max leaf dimensions  
1500 mm (w) x 3500 mm (h)

4+2



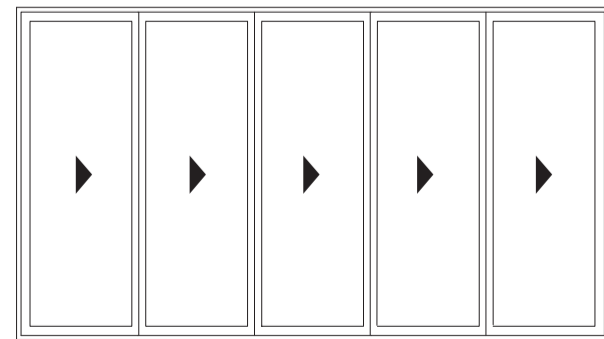
Max. leaf dimensions  
1500 mm (w) x 3500 mm (h)

3+3



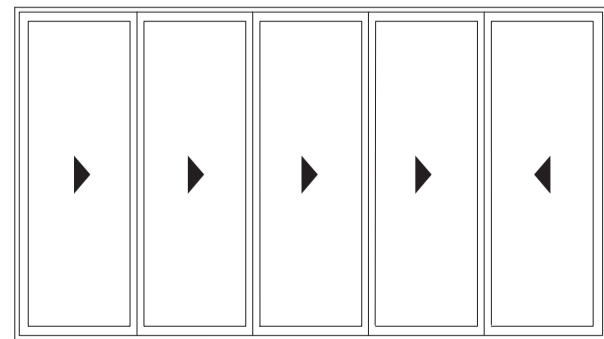
Max. leaf dimensions  
1500 mm (w) x 3500 mm (h)

5+0



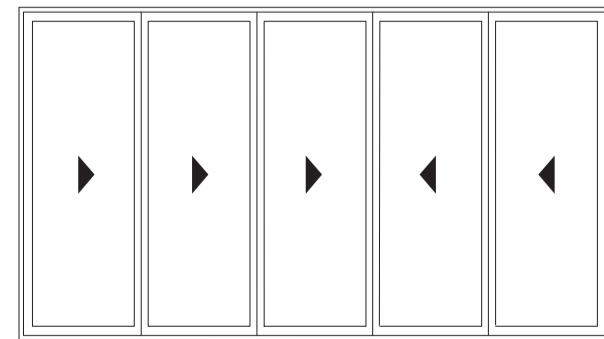
Max. leaf dimensions  
1500 mm (w) x 3500 mm (h)

4+1



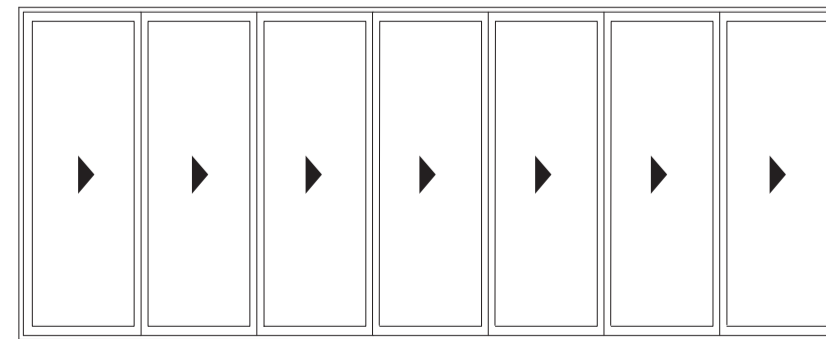
Max leaf dimensions  
1500 mm (w) x 3500 mm (h)

3+2



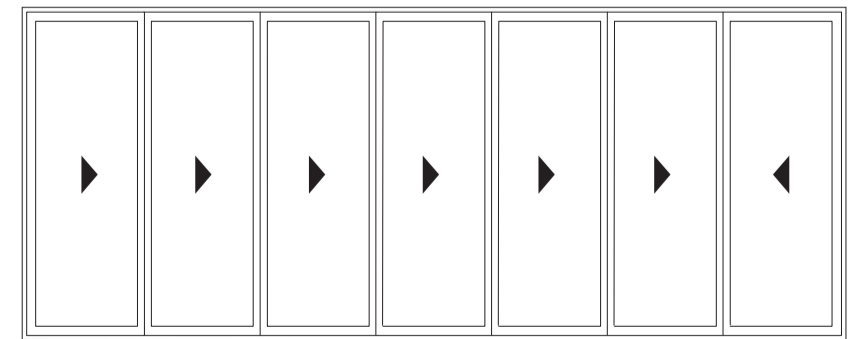
Max leaf dimensions  
1500 mm (w) x 3500 mm (h)

7+0



Max. leaf dimensions  
1500 mm (w) x 3500 mm (h)

6+1

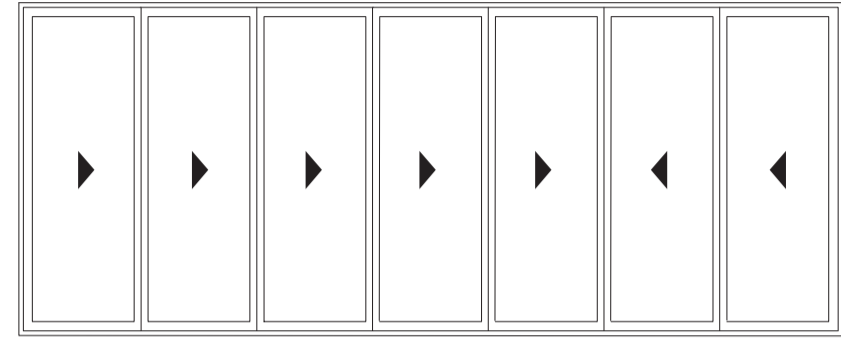


Max. leaf dimensions  
1500 mm (w) x 3500 mm (h)

# Opening Possibilities

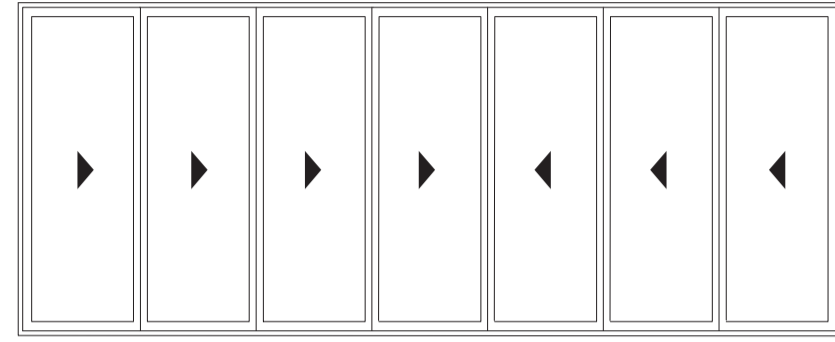
# Perla B2 Bifold Doors Opening Possibilities

5 + 2



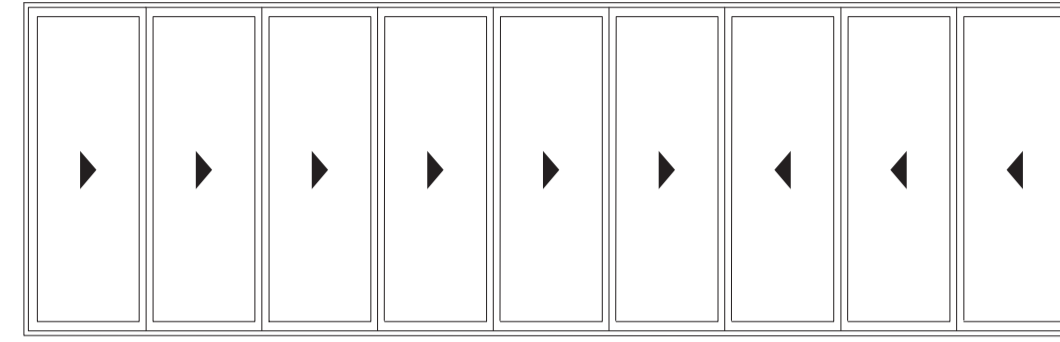
Max. leaf dimensions  
1500 mm (w) x 3500 mm (h)

4 + 3



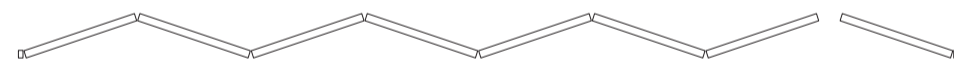
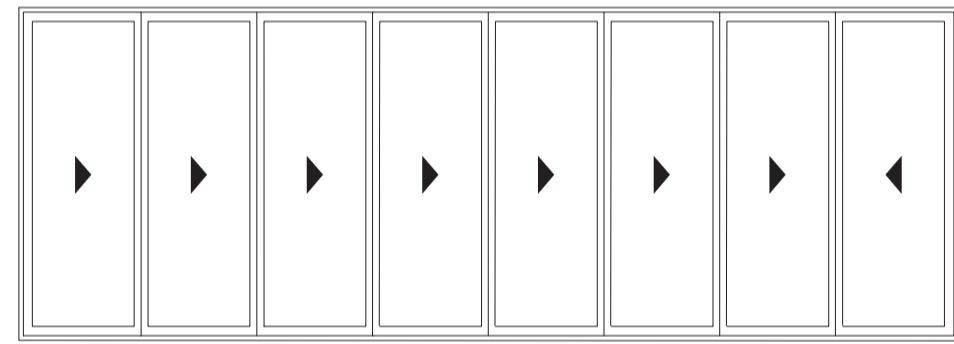
Max. leaf dimensions  
1500 mm (w) x 3500 mm (h)

6 + 3



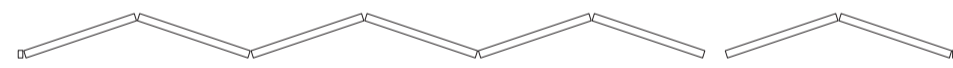
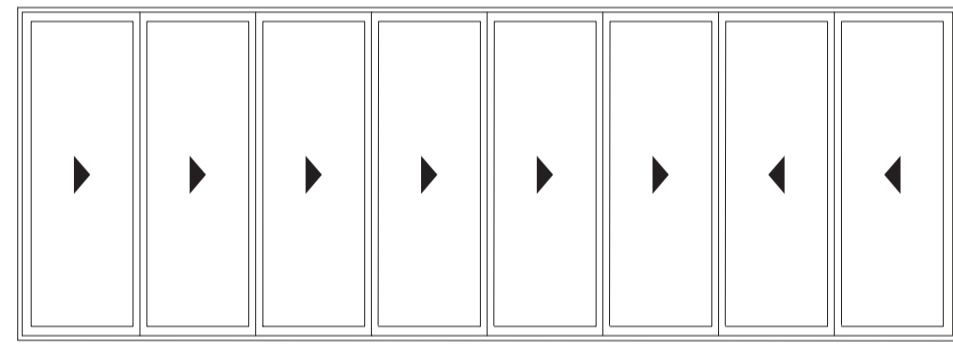
Max. leaf dimensions  
1500 mm (w) x 3500 mm (h)

7 + 1



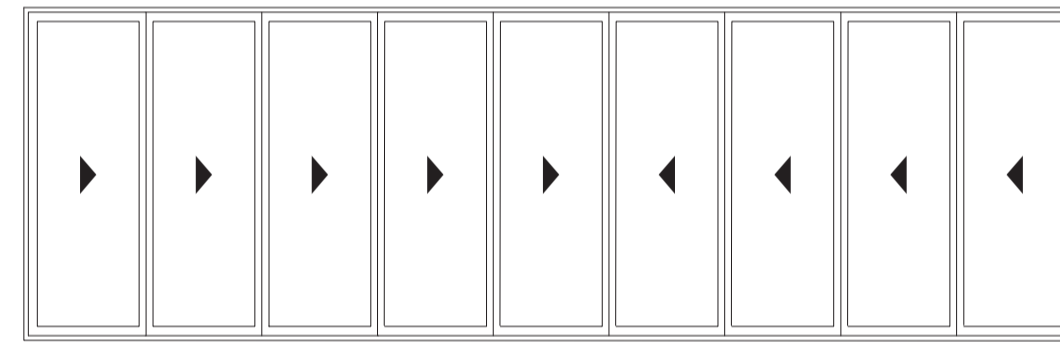
Max. leaf dimensions  
1500 mm (w) x 3500 mm (h)

6 + 2



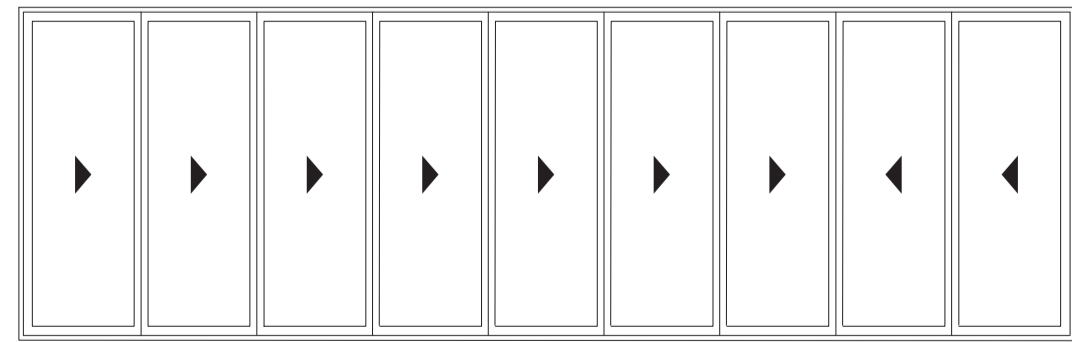
Max. leaf dimensions  
1500 mm (w) x 3500 mm (h)

5 + 4



Max. leaf dimensions  
1500 mm (w) x 3500 mm (h)

7 + 2



Max. leaf dimensions  
1500 mm (w) x 3500 mm (h)

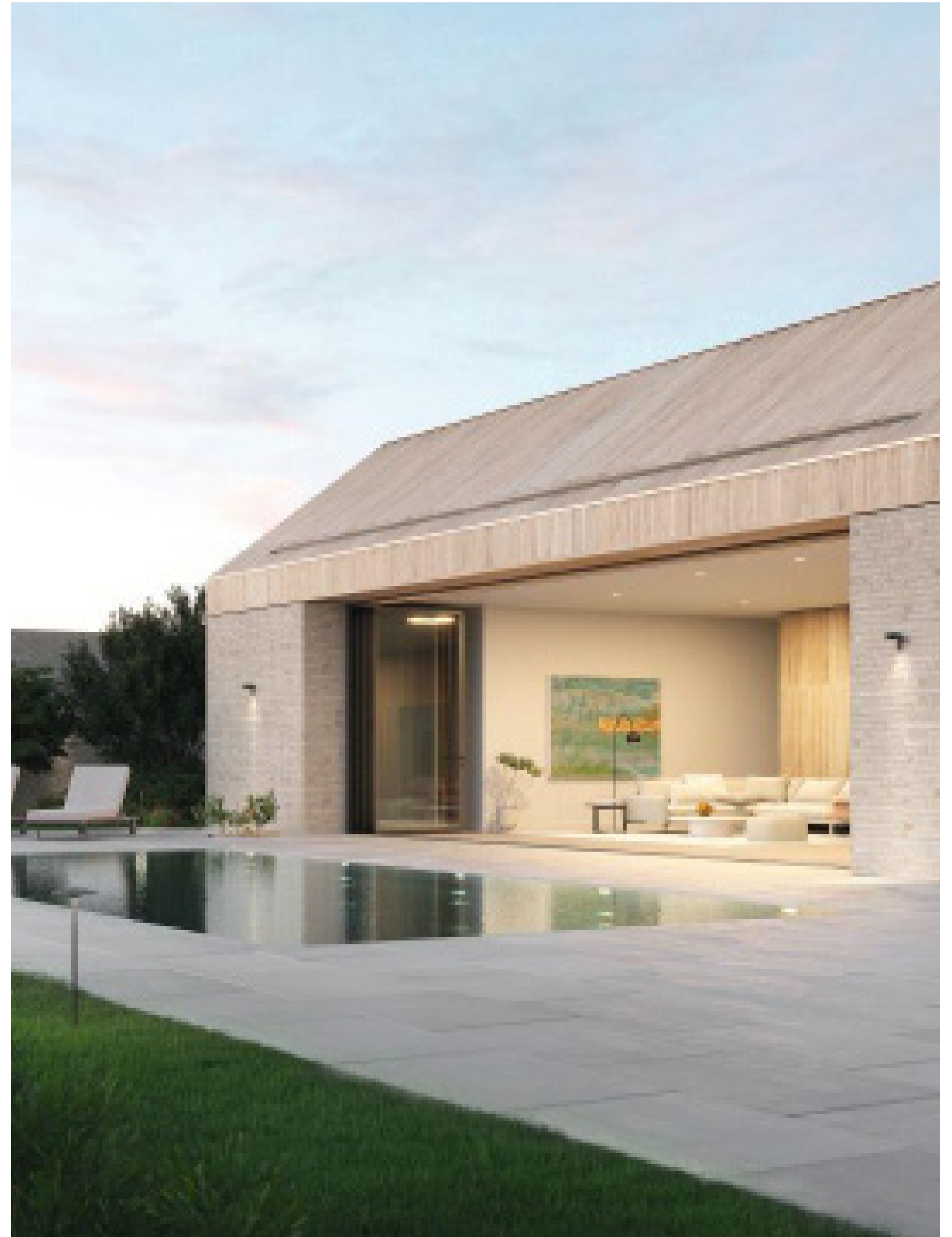
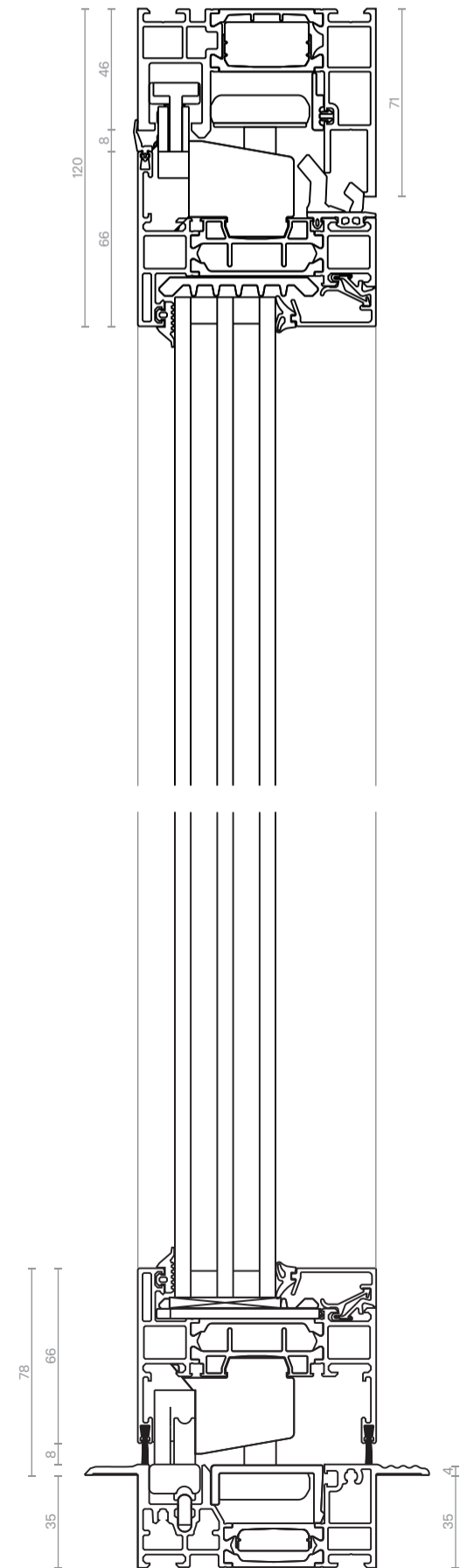
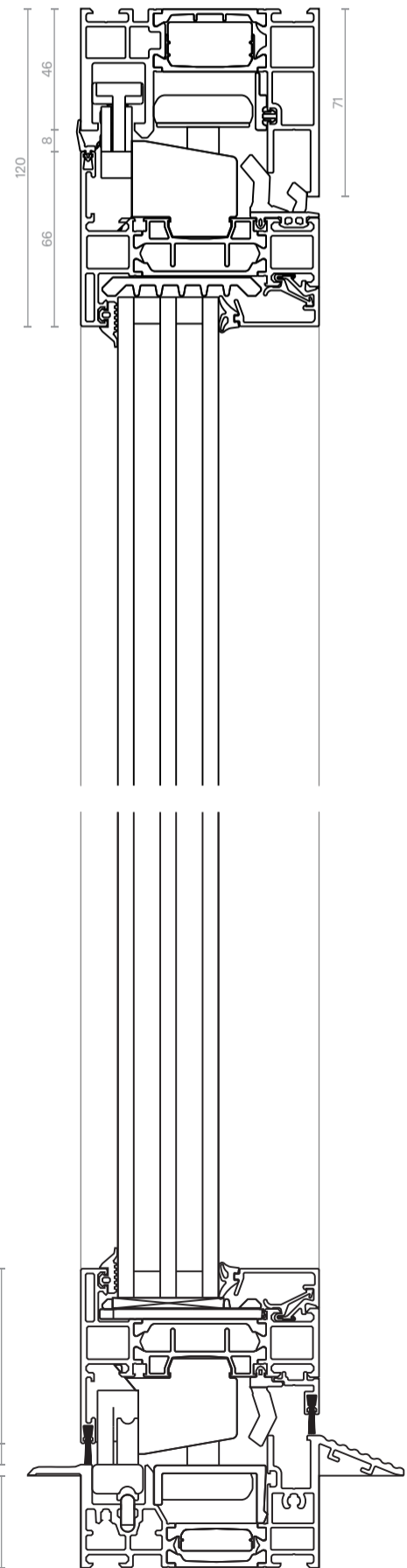
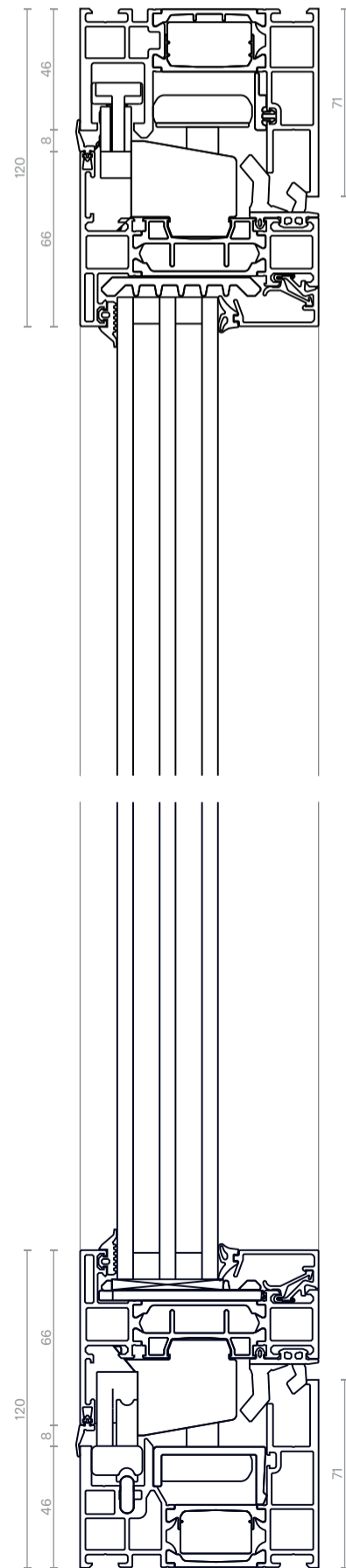
Threshold Options

Perla  
B2 Bifold Doors  
Threshold options

77 mm  
Threshold

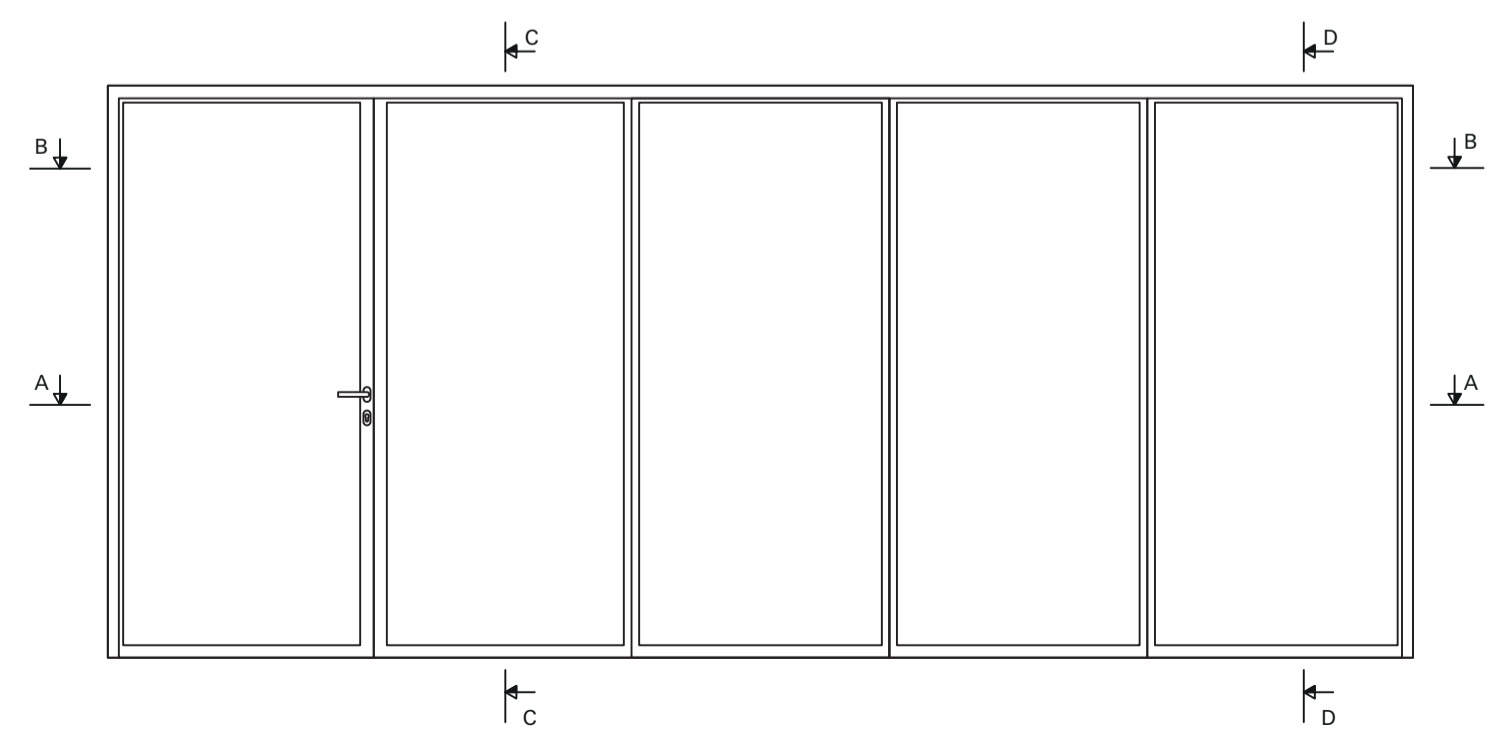
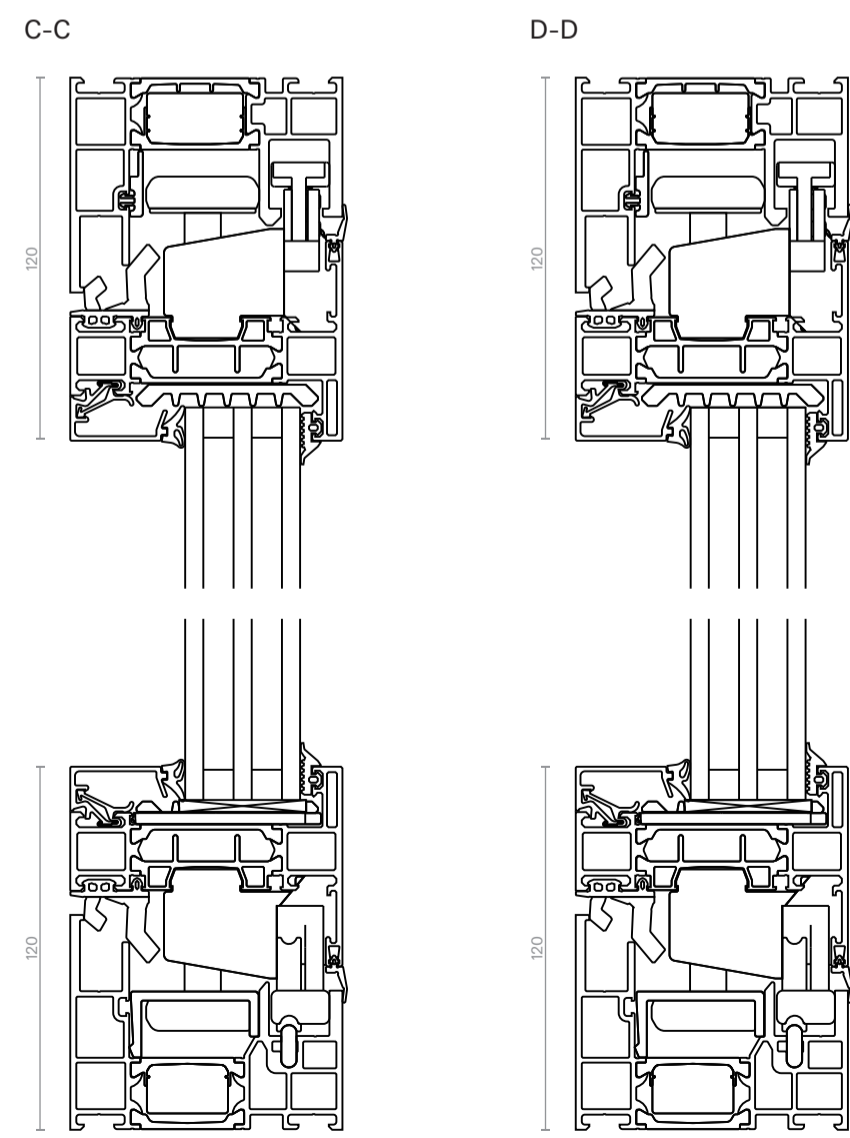
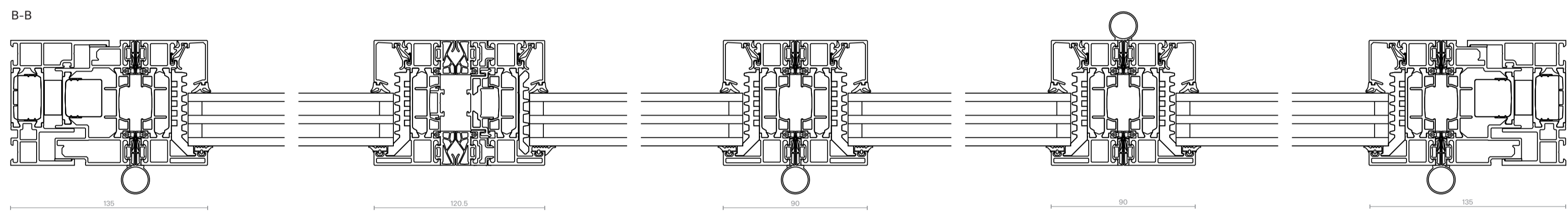
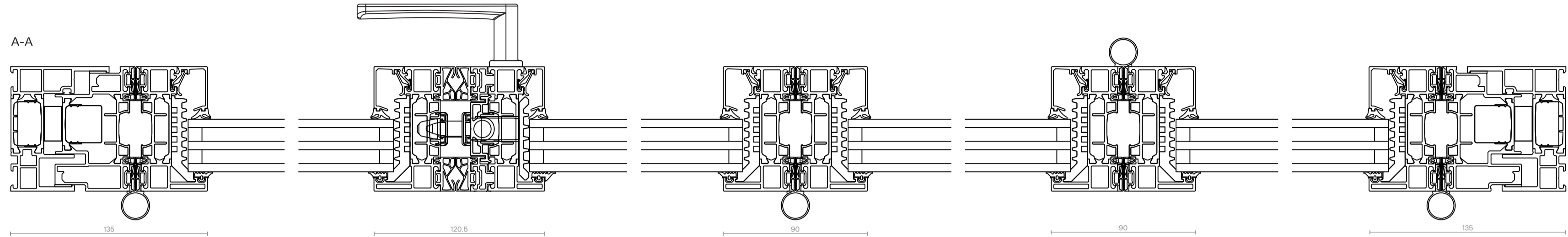
15 mm  
Threshold

4 mm  
Threshold



Bifold doors

Perla  
B2 Bi-fold Doors  
Example drawings



We reserve the right to make technical improvements or modifications of any type even during the validity of this catalogue without prior notice to the customer. Perla Windows Limited takes no liability for misprints or mistakes in scale reproductions. No part of this catalogue may be published, distributed, extracted, reused or reproduced in any form except under written permission by Perla Windows Limited. Technical drawings are for guidance only and must be studied and verified from a mechanical, functional and static point of view, relieving the companies of every responsibility of any kind.

Published 04.2025. Subject to change.



Perla Windows Limited  
Unit 2, 8 Greenock Road  
Acton Industrial Estate  
London W3 8DU UK

T +44 0 203 906 1776  
E [info@perlawindows.com](mailto:info@perlawindows.com)

[www.perlawindows.com](http://www.perlawindows.com)



Find out more and be inspired