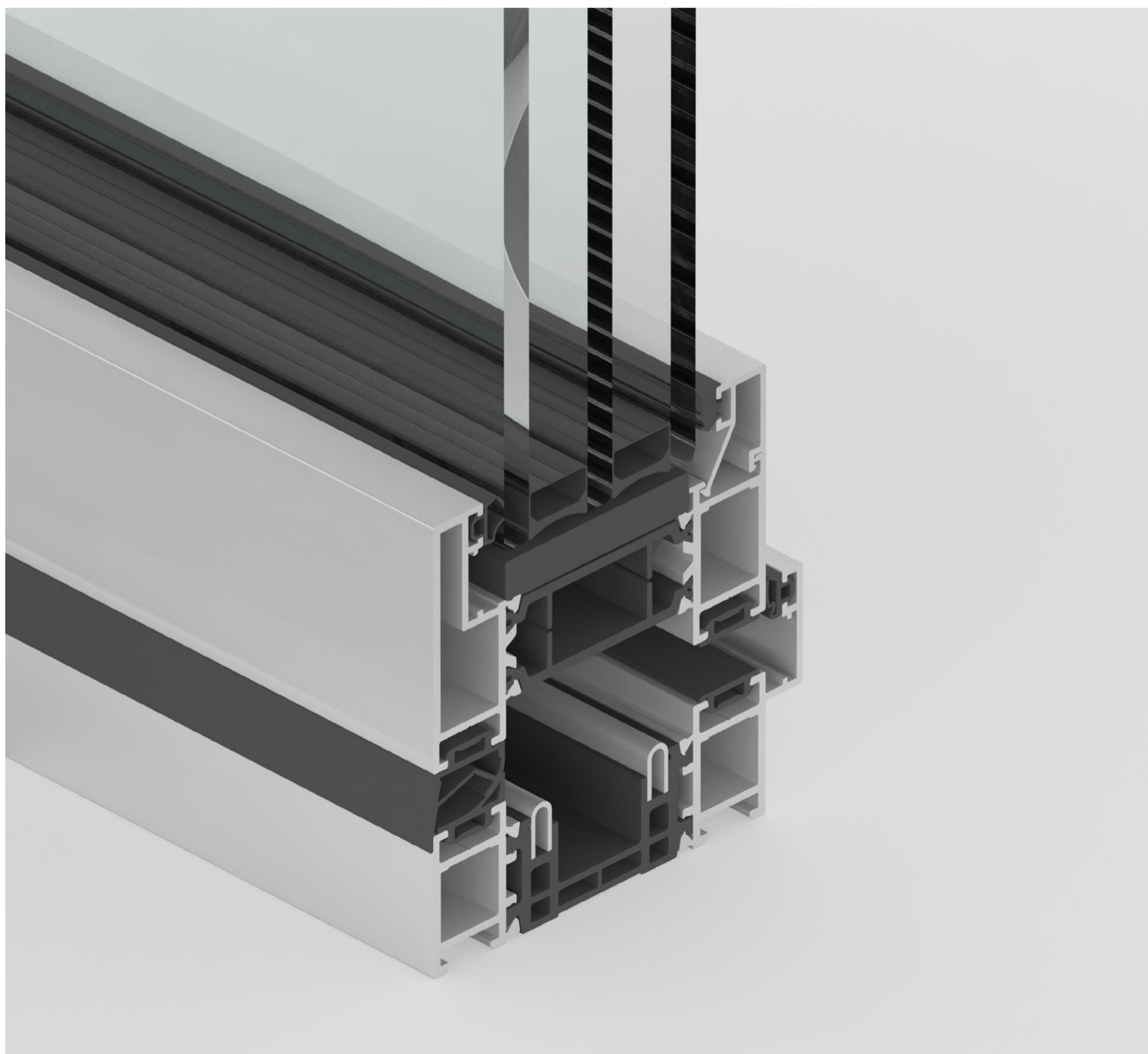


Bi-fold Doors



B1

High-performance slimline
aluminium bi-fold doors



B1 Bi-fold Doors

Bring the outside in and expand interior spaces

With its 80 mm deep frame, the Perla B1 Bi-fold door system creates a seamless connection between indoor and outdoor spaces. Designed for exceptional thermal and acoustic performance, it features a 45 mm thermal bridge and supports glazing up to 48 mm thick. The system can accommodate up to 14 panels in various interior and exterior opening configurations, with each panel handling up to 120 kg and measuring up to 1200 x 3000 mm. A slim 110 mm central section maximizes glazing, flooding interiors with natural light.

Features



uValue from 0.8 W/(m²K)
Most energy efficient bi-fold door system available



Up to 3.0m Vent Height
Largest slimline bi-fold door system on the market



Range of Finishes
RAL Classic, metallic or anodised finishes.



Sound Insulation
Acoustic insulation cancels out exterior noise



Thermal Barrier
Composite thermal insulation system



Burglary Resistance
Security tested to RC 2/PAS 24



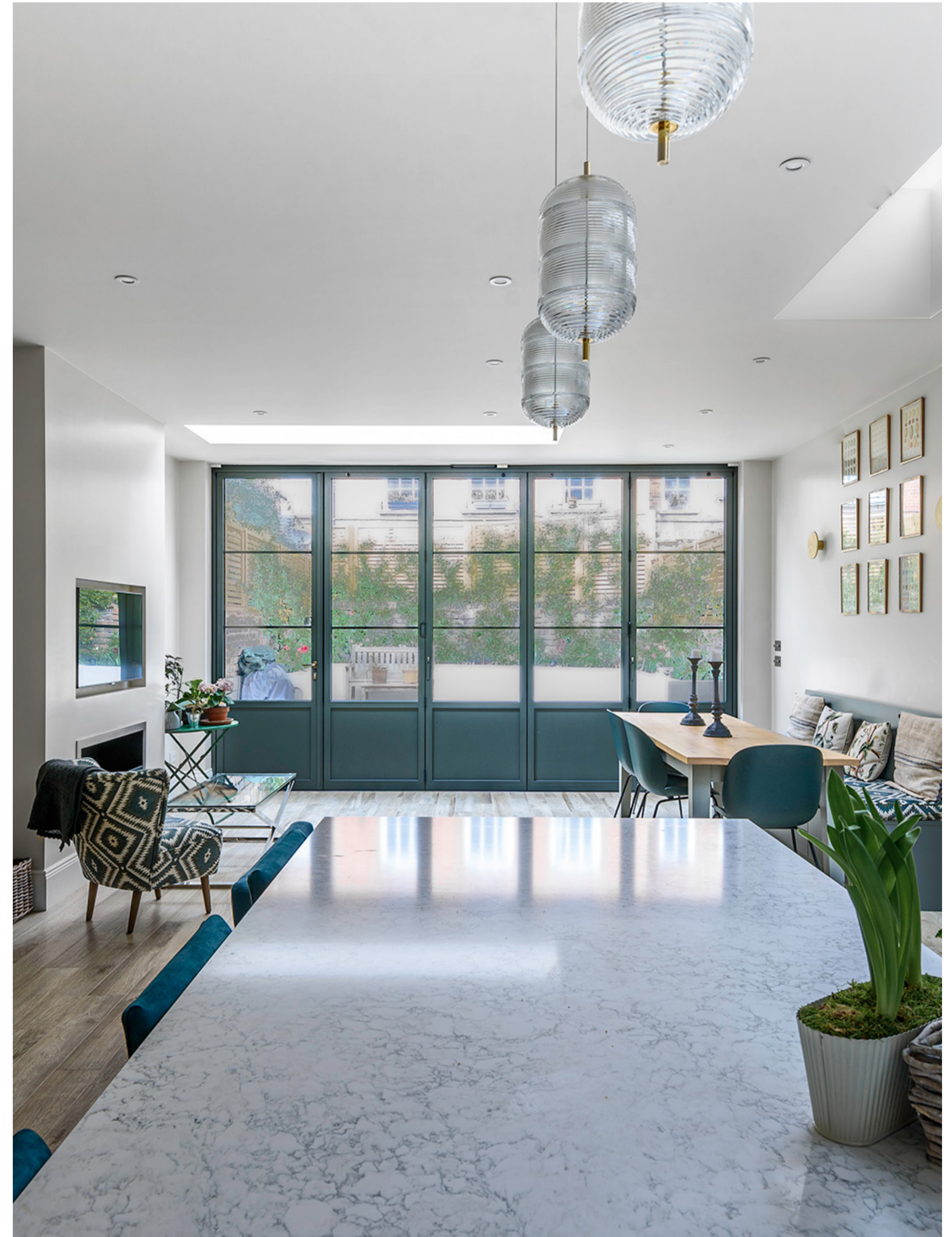
Wind Resistance
Certified Class C3 to meet EN 12210



Air Permeability
Certified Class 4 to meet EN 12207



Water Tightness
Certified Class E750 to meet EN 12210

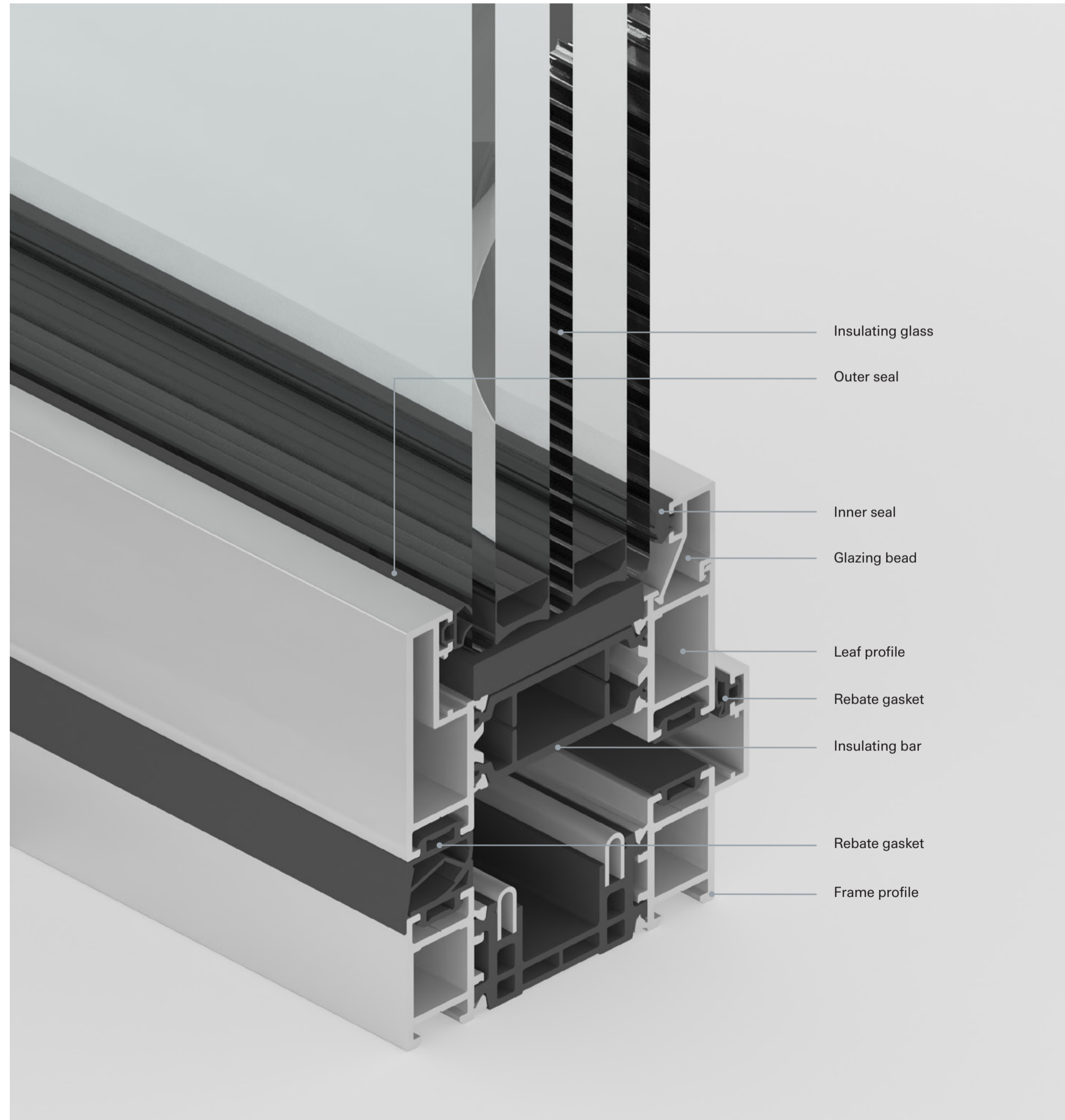


Overview

Perla
Slimline Bi-fold Doors
System overview

Minimalist design meets exceptional engineering

1. Slim sightlines:
Frame and sash at just 73 mm
2. Durable profiles:
Strong 1.8 mm thickness
3. Polyamide strip insulation:
Frame 20 mm, leaf 30 mm
4. Versatile glazing:
Supports 25–48 mm thickness
5. Flexible opening options:
Inward or outward, up to 14 sashes
6. Seamless corner design:
90° corner sash without a mullion
7. Three threshold options
8.5 mm, 28.5 mm, and 48.5 mm for
minimal trip hazards, easy access, and
maximum weather tightness.



Minimal sightlines

With a construction depth of 80 mm, the face width of the leaf and frame profile add up to a narrow face plate of just 89.5 mm.

80 mm
profile depth

89.5 mm
face plate

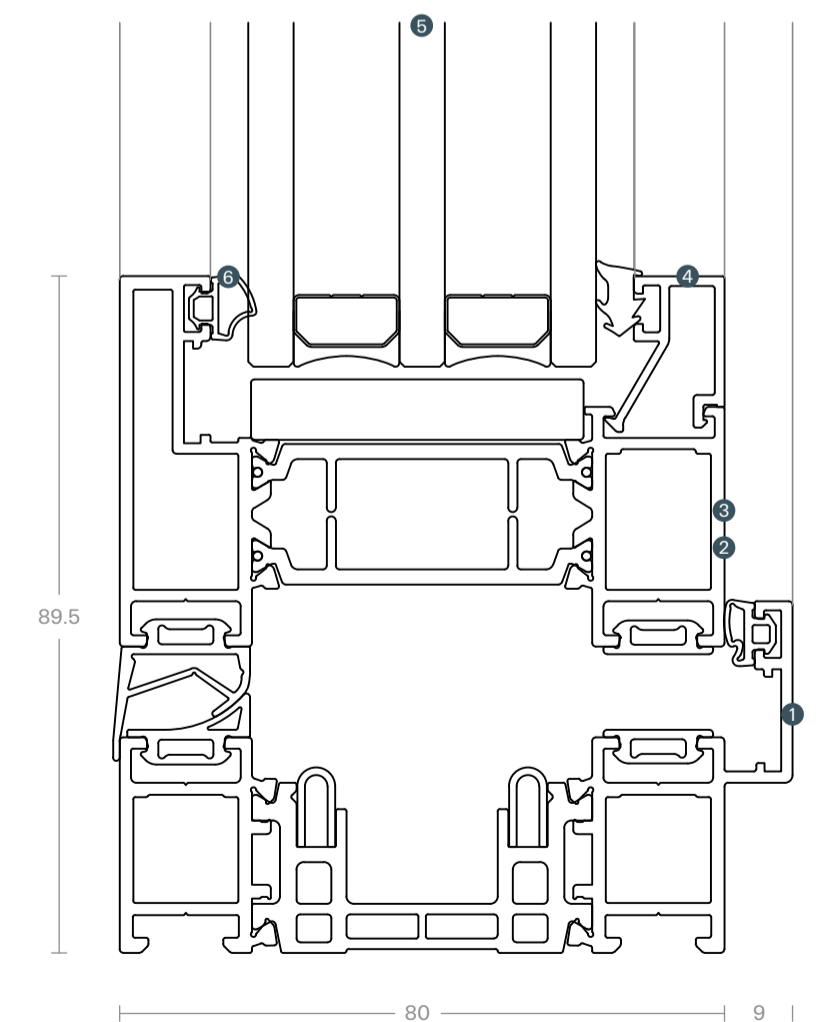
Maximum dimensions

Element sizes of up to 1200 mm width x 3000 mm height per leaf (max. 120 kg leaf weight)

120 cm
max. leaf width

300 cm
max. leaf height

120 kg
max. leaf weight



Drawing scale 1:1

Design options

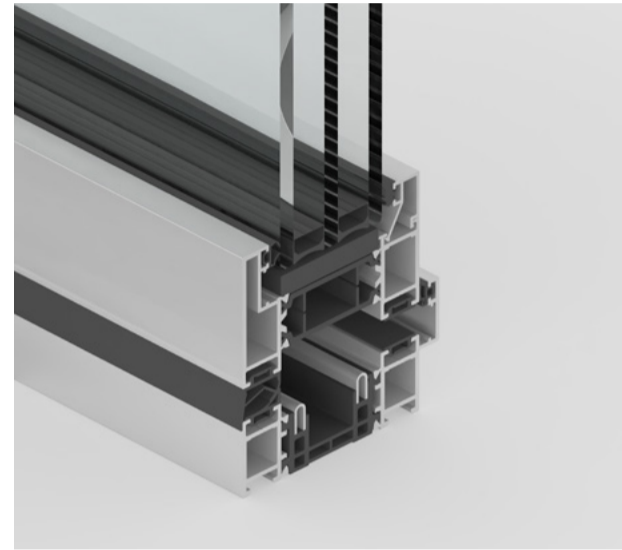
RAL powder-coated and metallic finishes

While stunning in its own right, the slimline frame of the B1 may be powder coated in any RAL colour to complement the interior design or external aesthetic of the property. Further more, thanks to the surface properties of high-grade aluminium, finishing options extend to a wide range of metallic powder coatings.

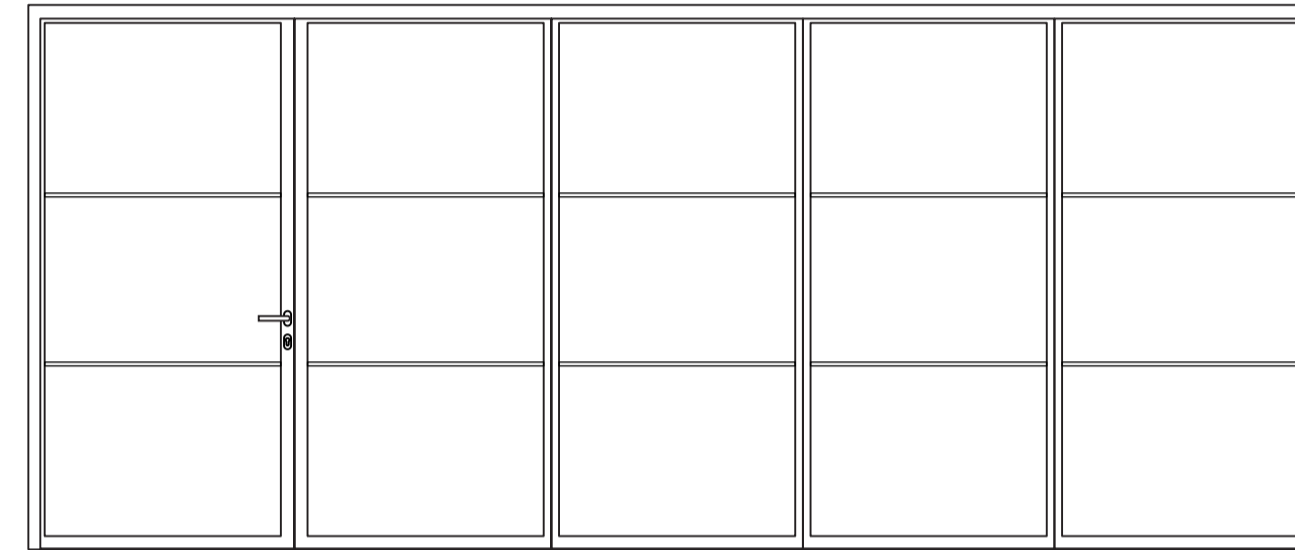
Perla
B1 Bi-fold Doors
System overview

Achieve a classic or industrial aesthetic with glazing bars

Glazing bars consist of an aluminium strips fixed to the surface of a duplexed glass unit. The glazing unit is full size, filling the sash or fix. The glazing bars are then applied to the surface in whatever configuration or direction specified. Patterns can be very intricate or designed to match existing or neighbouring buildings.



Your doors, your style
Bottom frames, sashes, meeting points and handles can be finished in a wide range of metallic and classic colour powder-coatings.



Total design freedom
With the additional option of applying horizontal glazing bars, it's possible to design truly unique glazing configurations.

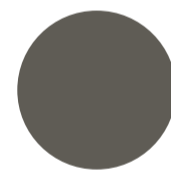
Metallic Powder Coatings



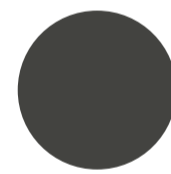
IGP Classic Comet



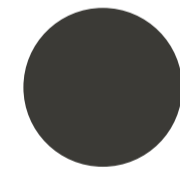
IGP Classic Triton



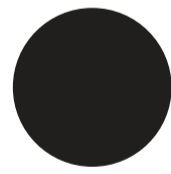
IGP Classic Moon Dust



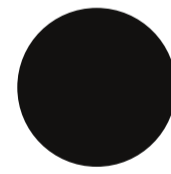
IGP Classic Eruption



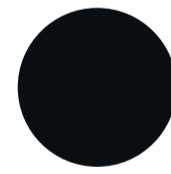
IGP Classic Shooting Star



IGP Classic Galaxy



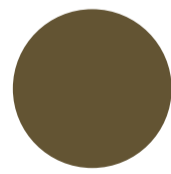
IGP Classic Meteorite



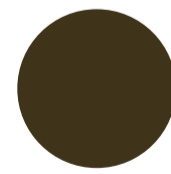
IGP Classic Gravity



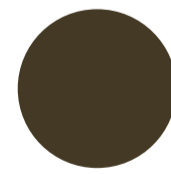
IGP DURA Classic 32



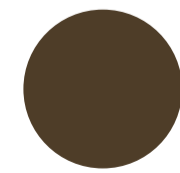
IGP DURA Classic 33



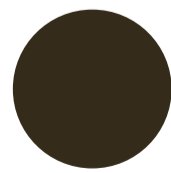
IGP DURA Aged Bronze



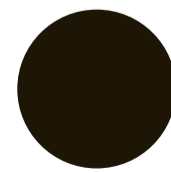
IGP DURA Smooth Carriage



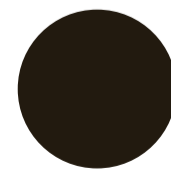
IGP DURA Medium Bronze



IGP DURA Scorpion Shell



IGP DURA Walnut Wood



IGP DURA Classic 34

Colour Powder Coatings



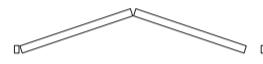
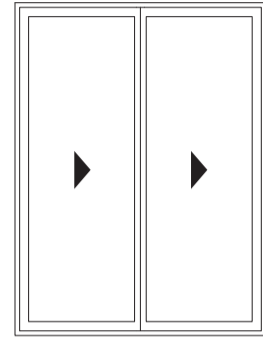
RAL Classic Colour System



Opening Possibilities

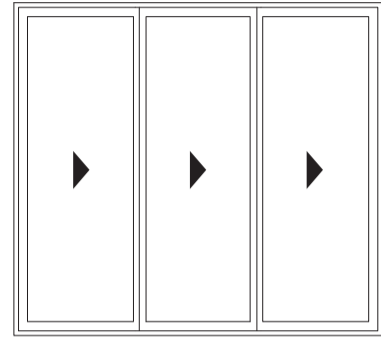
Perla B2 Bi-fold Doors Opening Possibilities

2 + 0



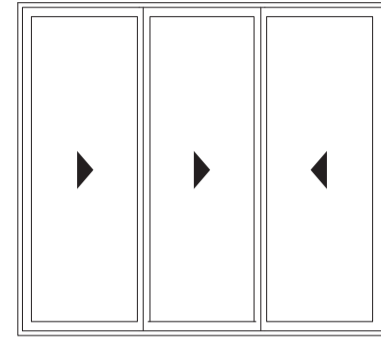
Max. leaf dimensions
1200 mm (w) × 3000 mm (h)

3 + 0



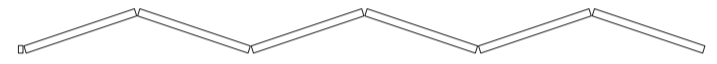
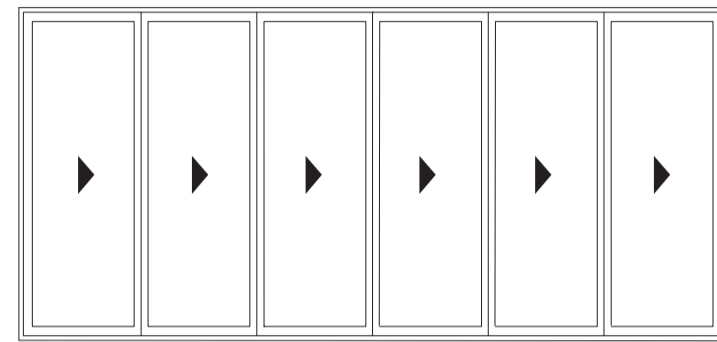
Max leaf dimensions
1200 mm (w) × 3000 mm (h)

2 + 1



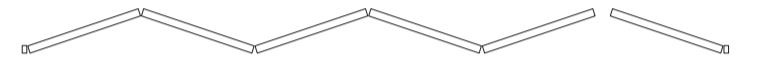
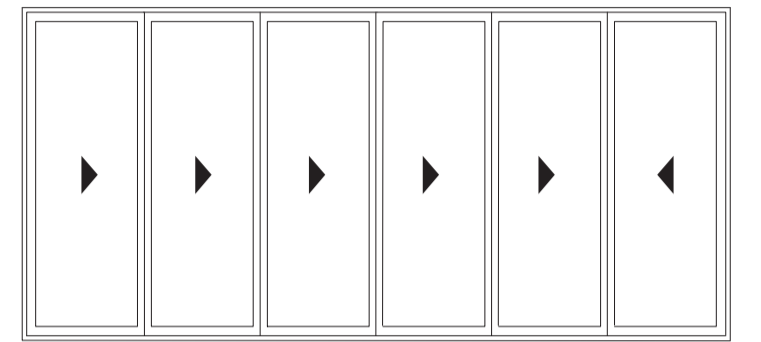
Max leaf dimensions
1200 mm (w) × 3000 mm (h)

6 + 0



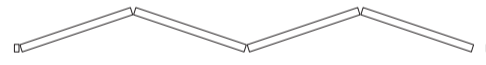
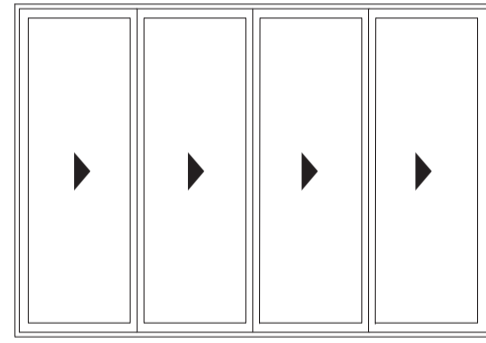
Max. leaf dimensions
1200 mm (w) × 3000 mm (h)

5 + 1



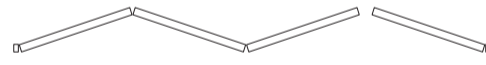
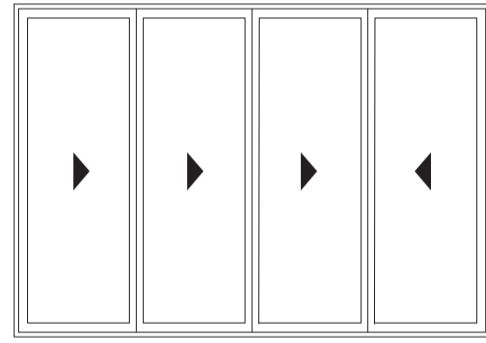
Max. leaf dimensions
1200 mm (w) × 3000 mm (h)

3 + 0



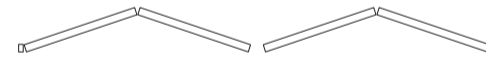
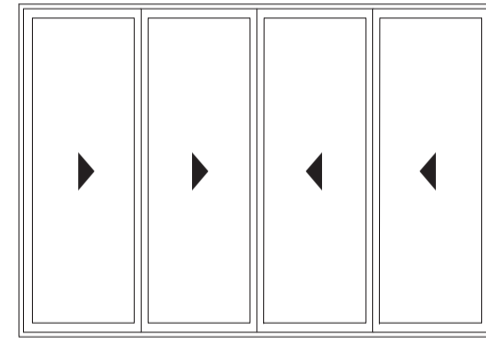
Max. leaf dimensions
1200 mm (w) × 3000 mm (h)

3 + 1



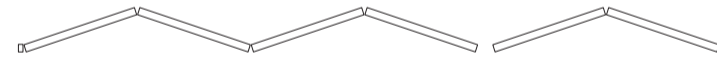
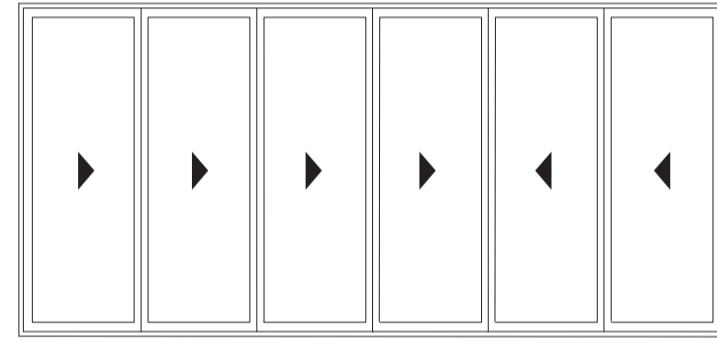
Max leaf dimensions
1200 mm (w) × 3000 mm (h)

2 + 2



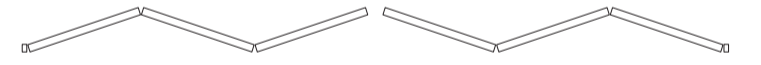
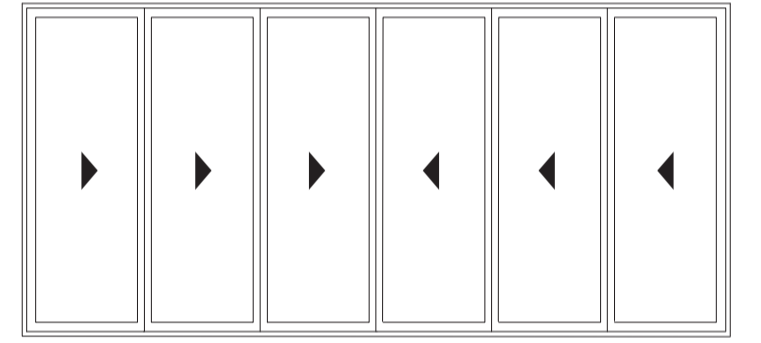
Max leaf dimensions
1200 mm (w) × 3000 mm (h)

4 + 2



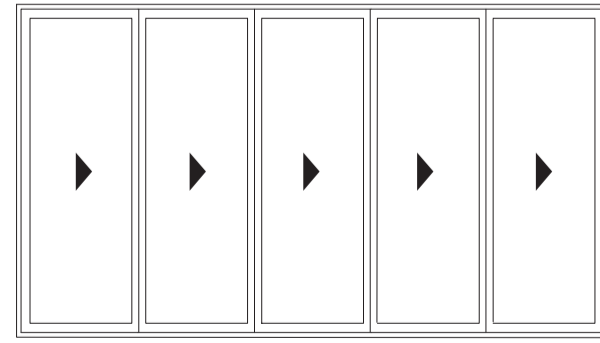
Max. leaf dimensions
1200 mm (w) × 3000 mm (h)

3 + 3



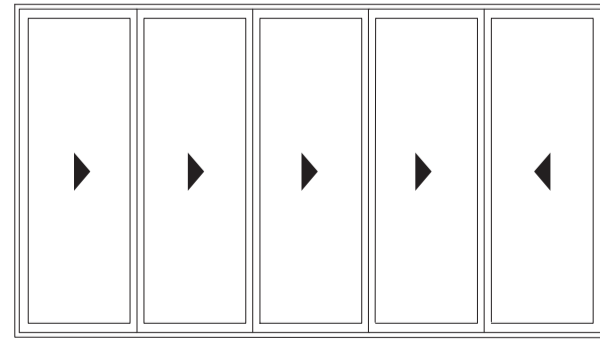
Max. leaf dimensions
1200 mm (w) × 3000 mm (h)

5 + 0



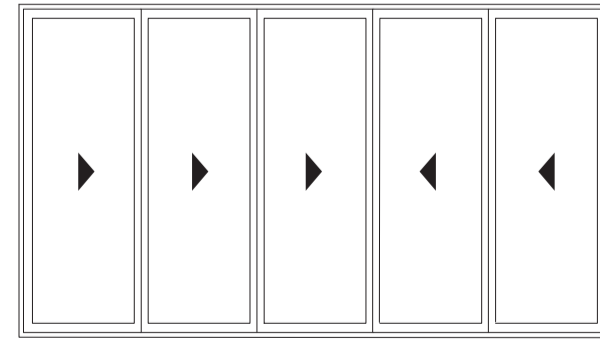
Max. leaf dimensions
1200 mm (w) × 3000 mm (h)

4 + 1



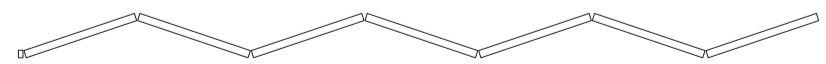
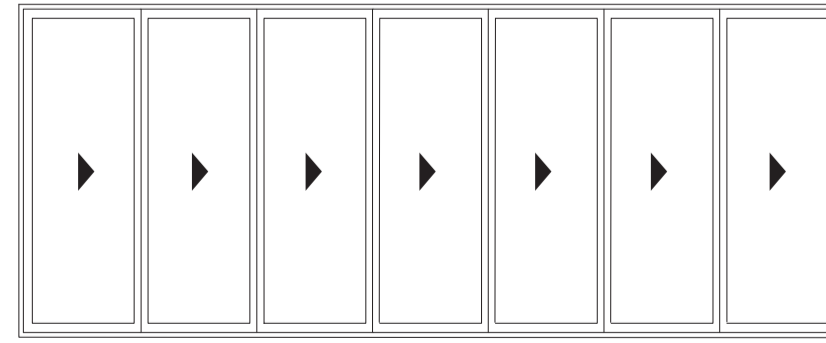
Max leaf dimensions
1200 mm (w) × 3000 mm (h)

3 + 2



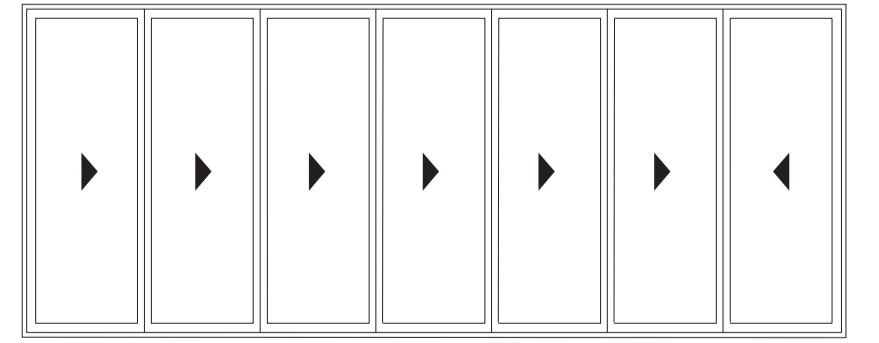
Max leaf dimensions
1200 mm (w) × 3000 mm (h)

7 + 0



Max. leaf dimensions
1200 mm (w) × 3000 mm (h)

6 + 1

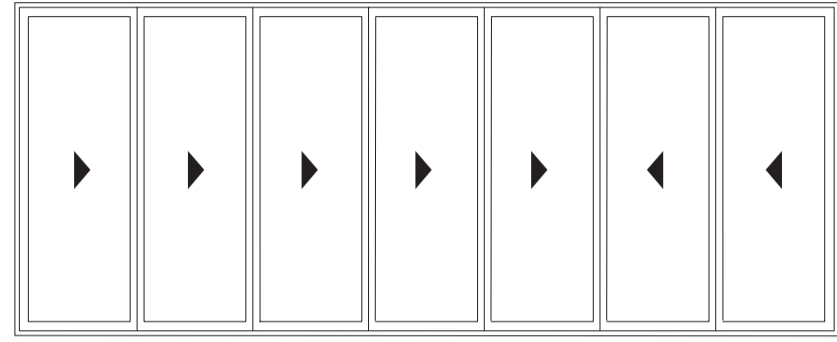


Max. leaf dimensions
1200 mm (w) × 3000 mm (h)

Opening Possibilities

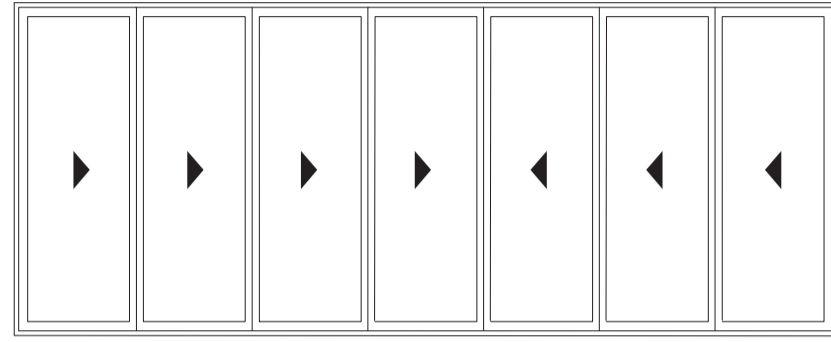
Perla B2 Bi-fold Doors Opening Possibilities

5 + 2



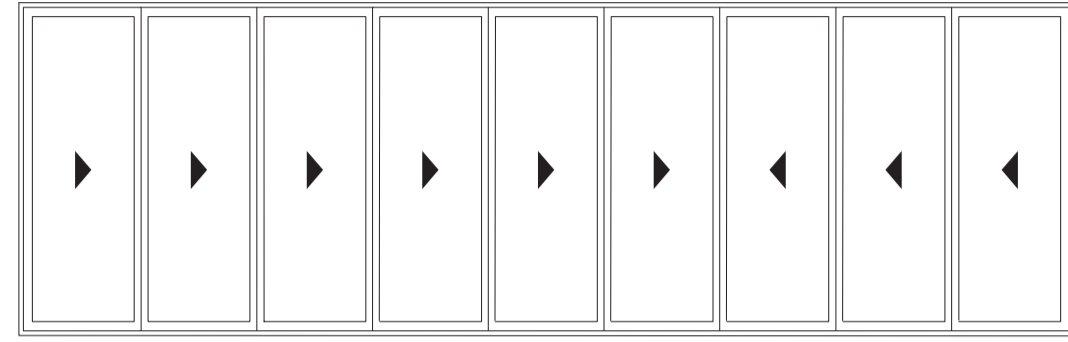
Max. leaf dimensions
1200 mm (w) × 3000 mm (h)

4 + 3



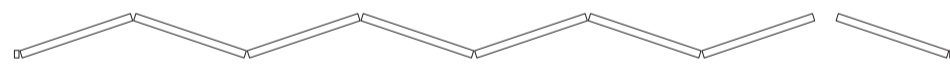
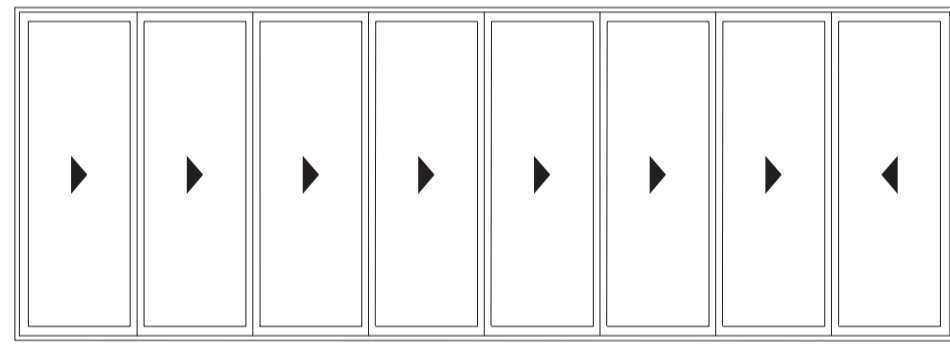
Max. leaf dimensions
1200 mm (w) × 3000 mm (h)

6 + 3



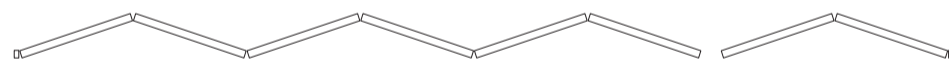
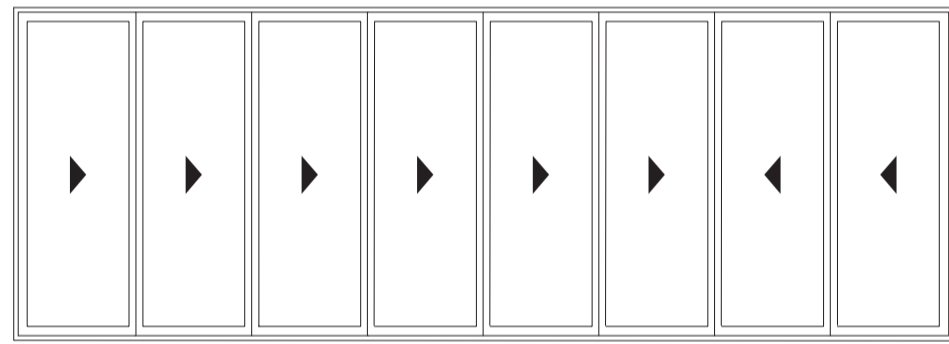
Max. leaf dimensions
1200 mm (w) × 3000 mm (h)

7 + 1



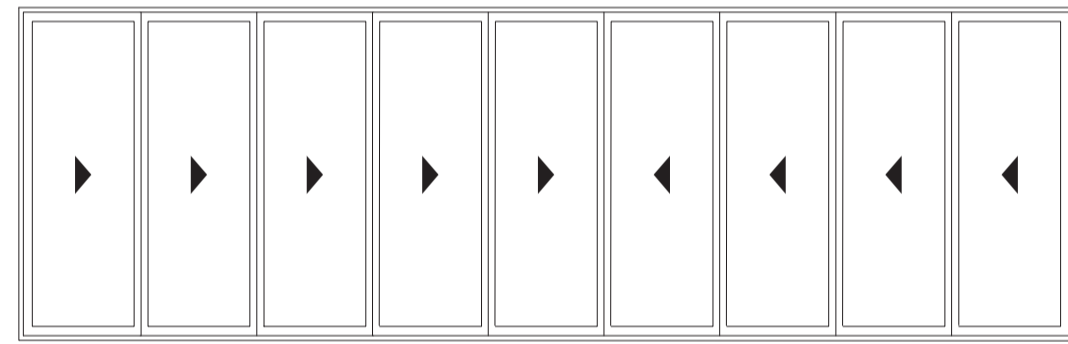
Max. leaf dimensions
1200 mm (w) × 3000 mm (h)

6 + 2



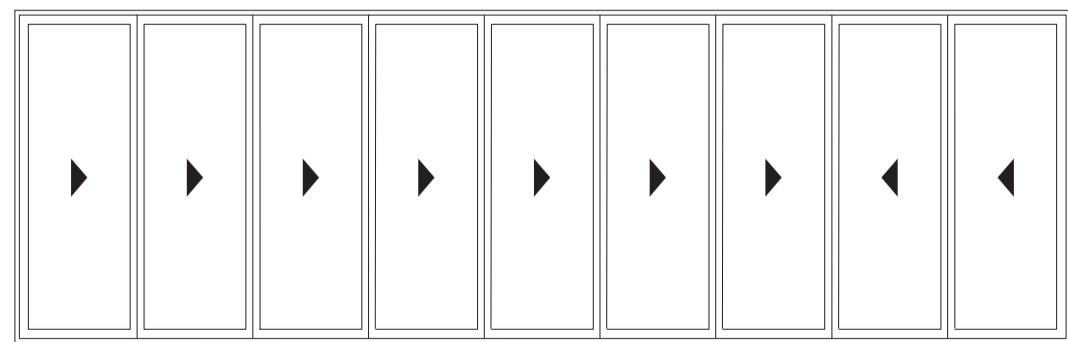
Max. leaf dimensions
1200 mm (w) × 3000 mm (h)

5 + 4



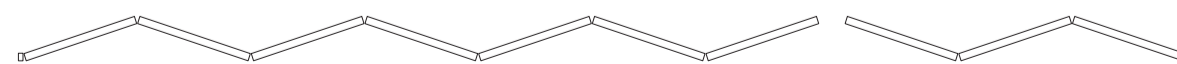
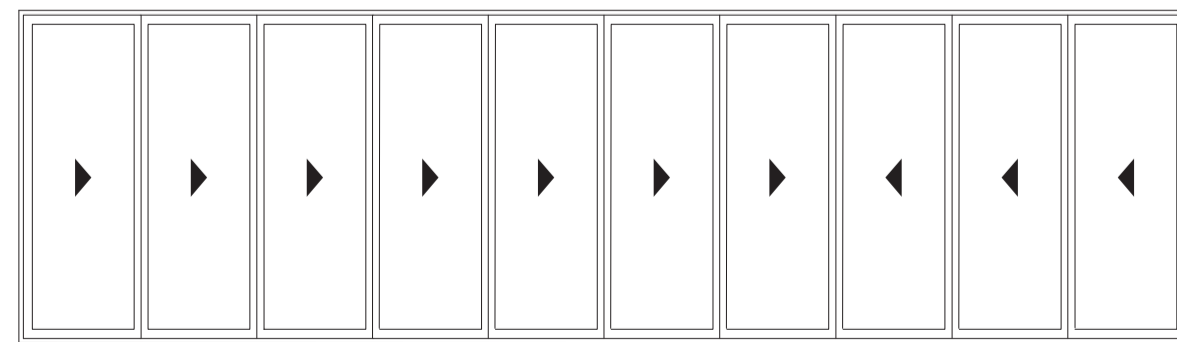
Max. leaf dimensions
1200 mm (w) × 3000 mm (h)

7 + 2



Max. leaf dimensions
1200 mm (w) × 3000 mm (h)

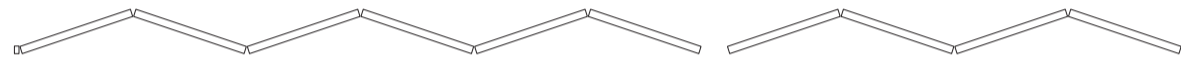
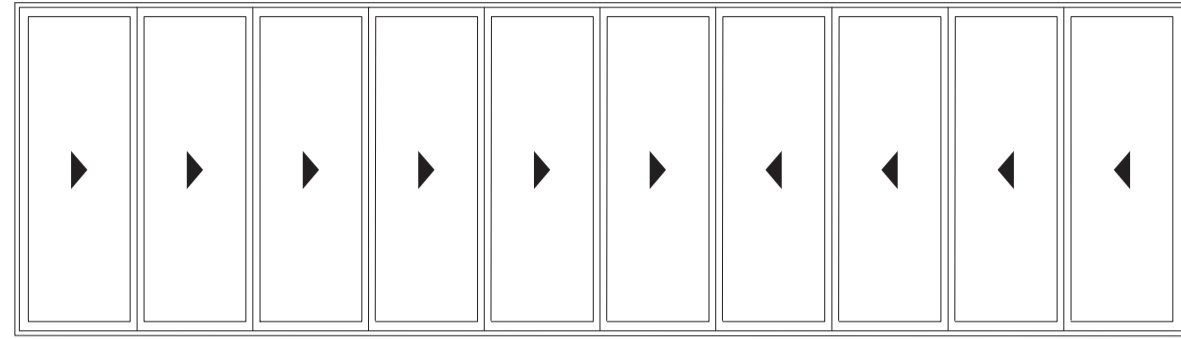
7 + 3



Max. leaf dimensions
1200 mm (w) × 3000 mm (h)

Opening Possibilities

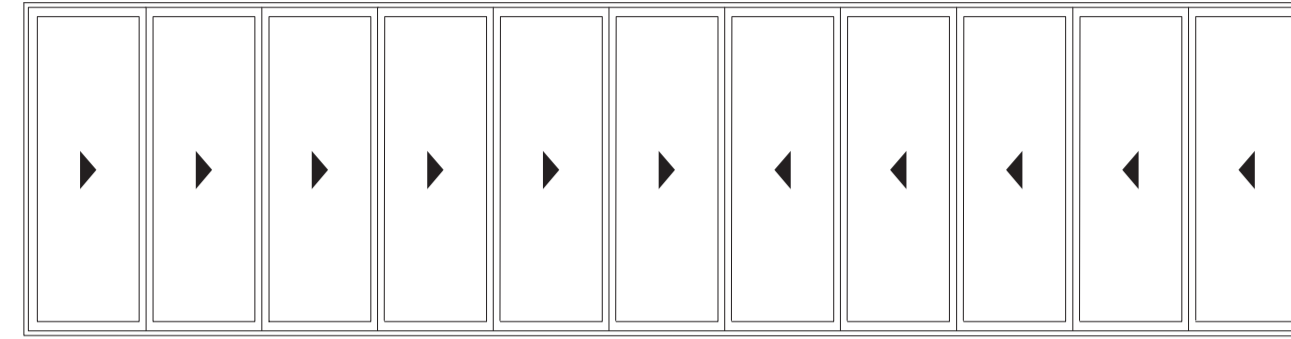
6 + 4



Max. leaf dimensions
1200 mm (w) x 3000 mm (h)

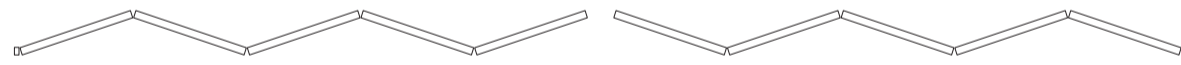
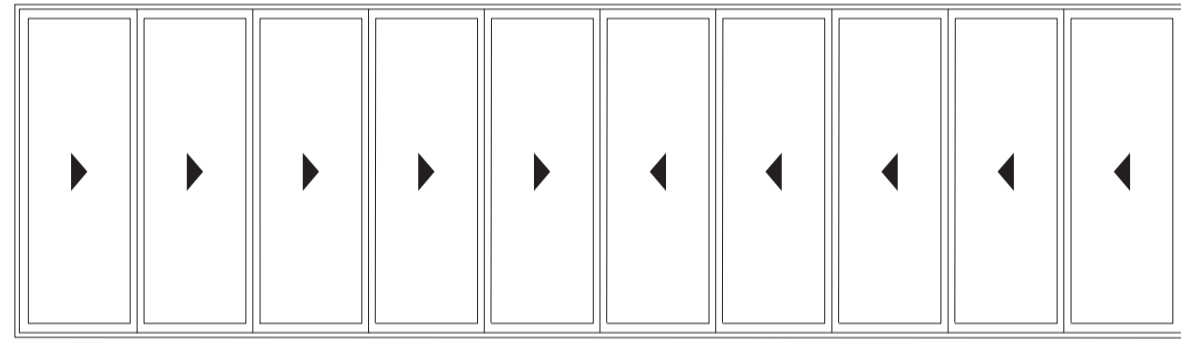
Perla B2 Bi-fold Doors Opening Possibilities

6 + 5



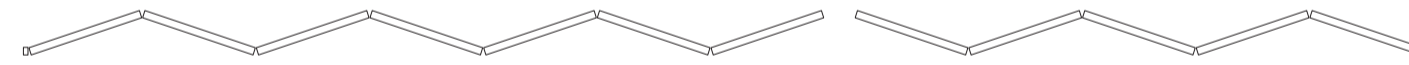
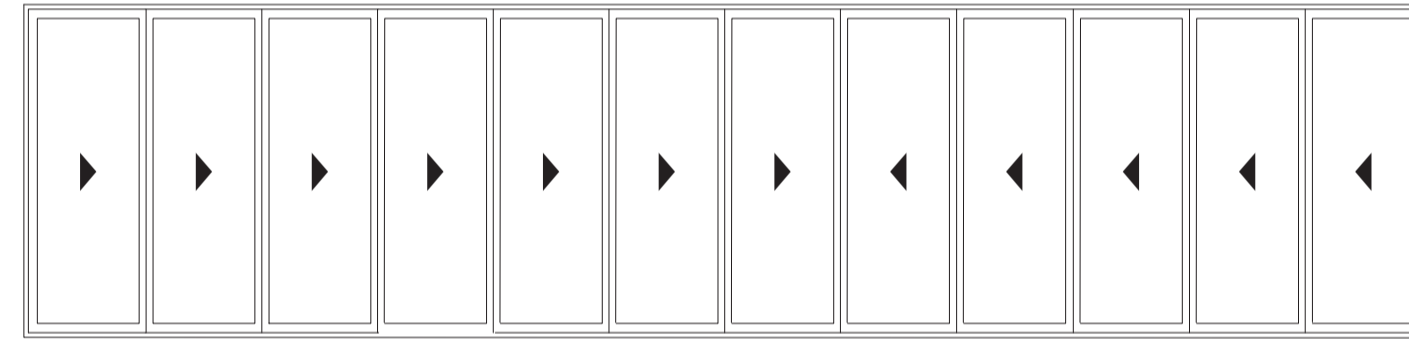
Max. leaf dimensions
1200 mm (w) x 3000 mm (h)

5 + 5



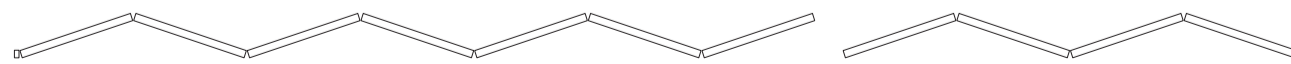
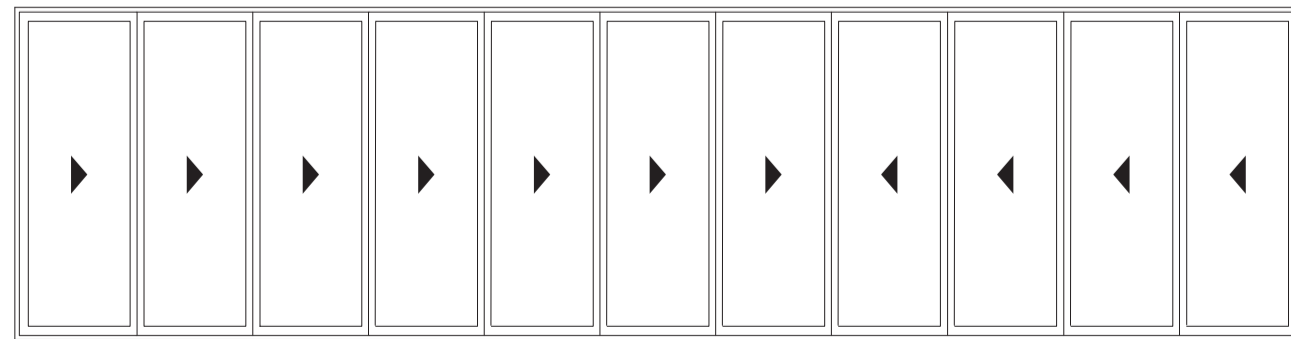
Max. leaf dimensions
1200 mm (w) x 3000 mm (h)

7 + 5



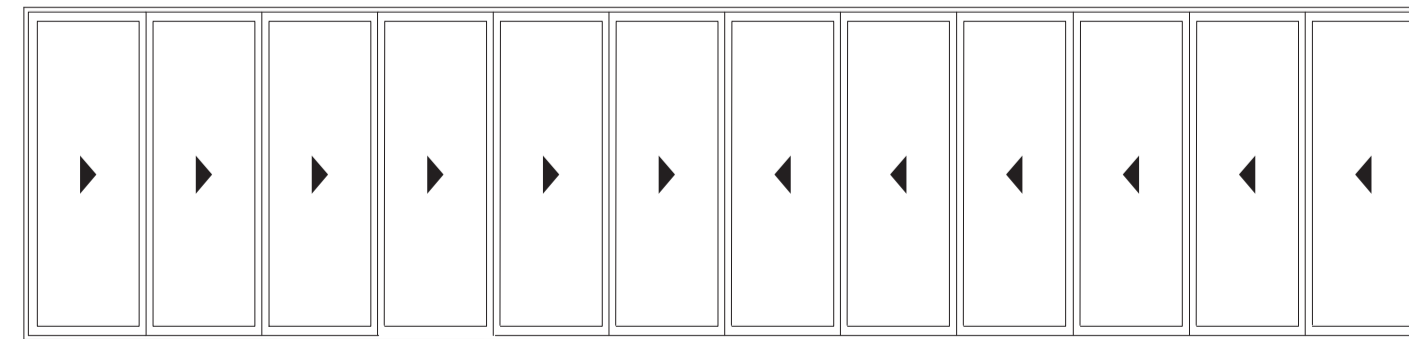
Max. leaf dimensions
1200 mm (w) x 3000 mm (h)

7 + 4



Max. leaf dimensions
1200 mm (w) x 3000 mm (h)

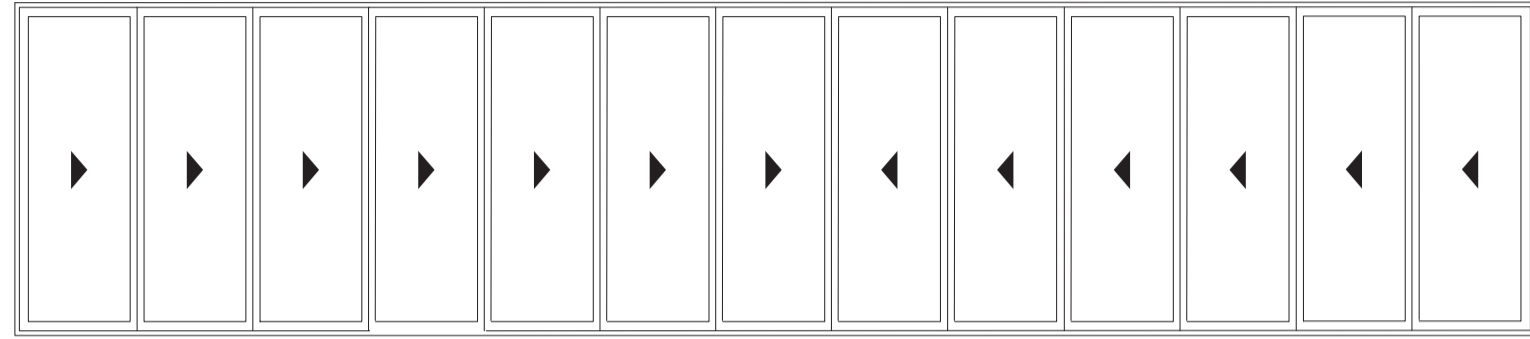
6 + 6



Max. leaf dimensions
1200 mm (w) x 3000 mm (h)

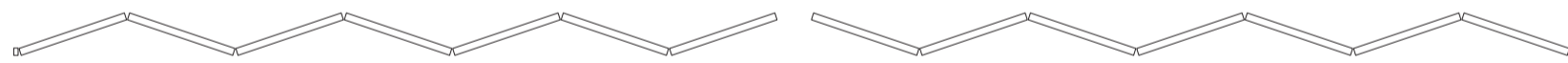
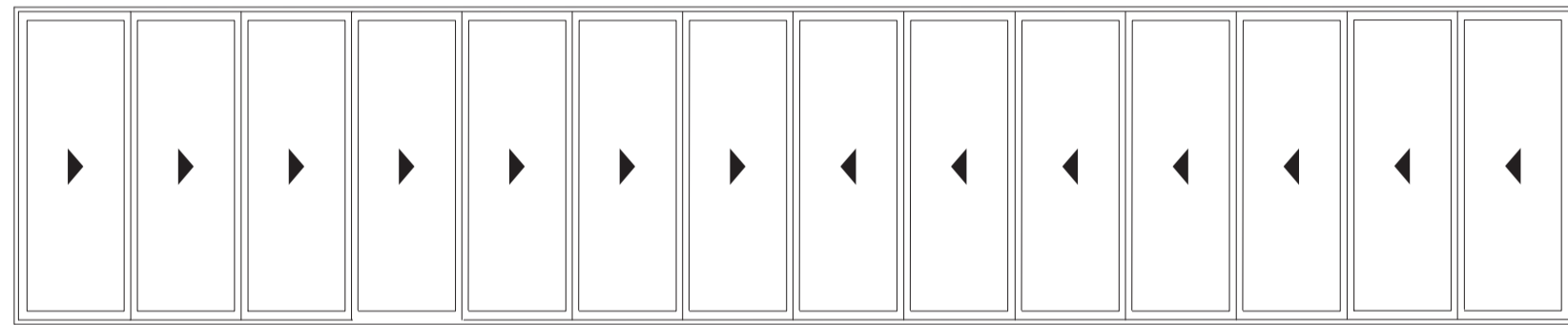
Opening Possibilities

7 + 6



Max. leaf dimensions
1200 mm (w) × 3000 mm (h)

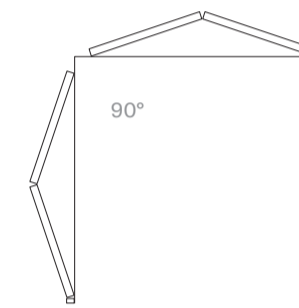
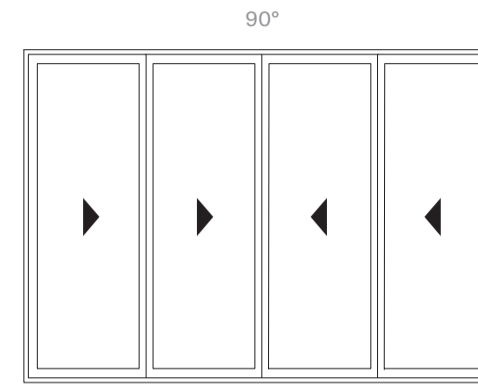
7 + 7



Max. leaf dimensions
1200 mm (w) × 3000 mm (h)

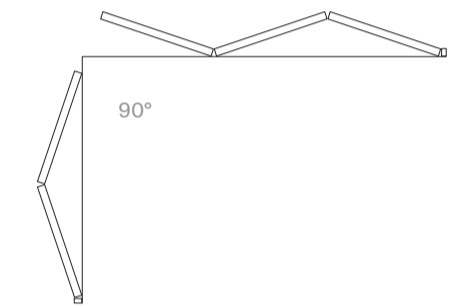
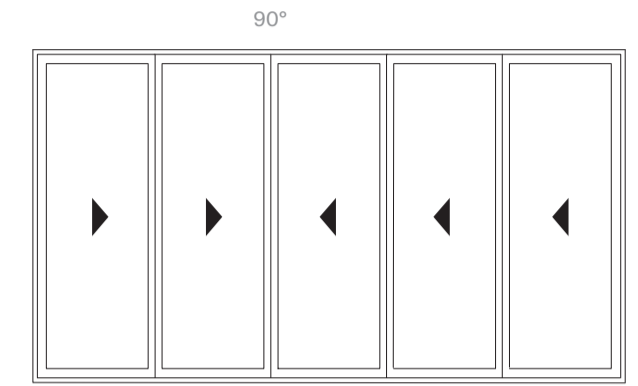
Perla B2 Bi-fold Doors Opening Possibilities

2 + 2



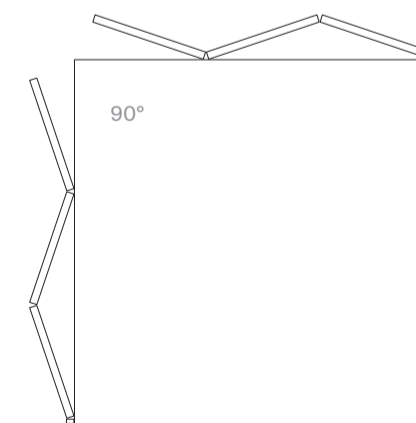
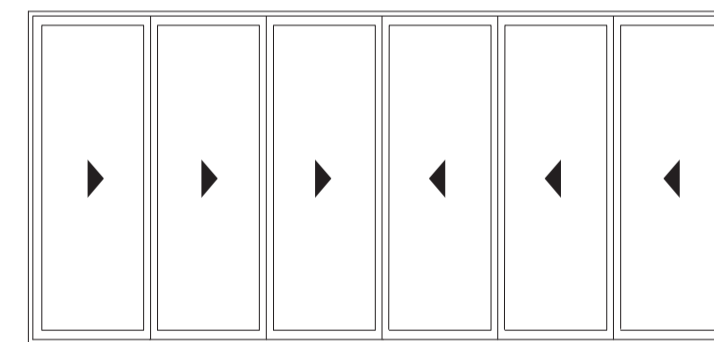
Max. leaf dimensions
1200 mm (w) × 3000 mm (h)

2 + 3



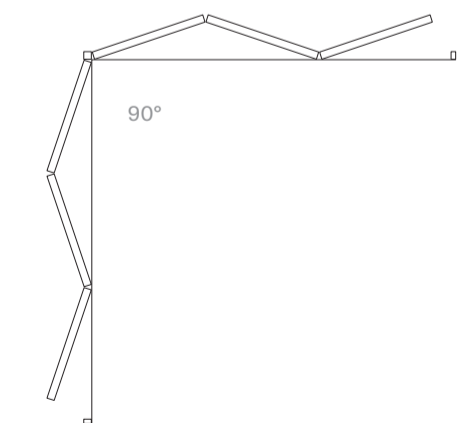
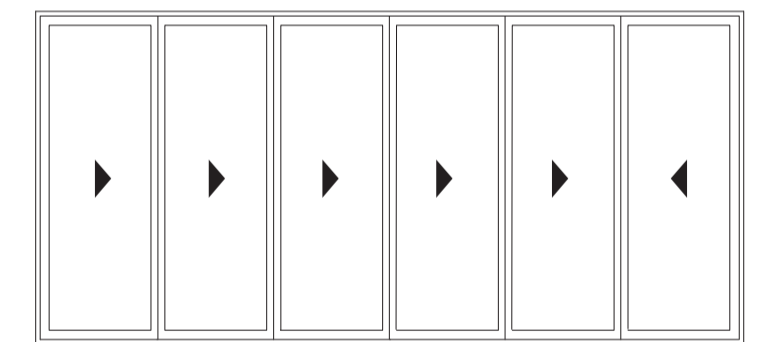
Max. leaf dimensions
1200 mm (w) × 3000 mm (h)

6 + 0



Max. leaf dimensions
1200 mm (w) × 3000 mm (h)

5 + 1



Max. leaf dimensions
1200 mm (w) × 3000 mm (h)

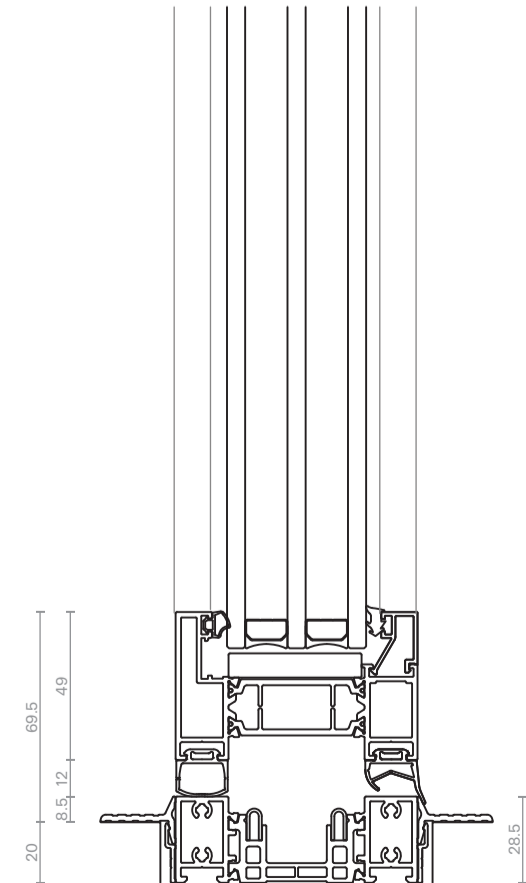
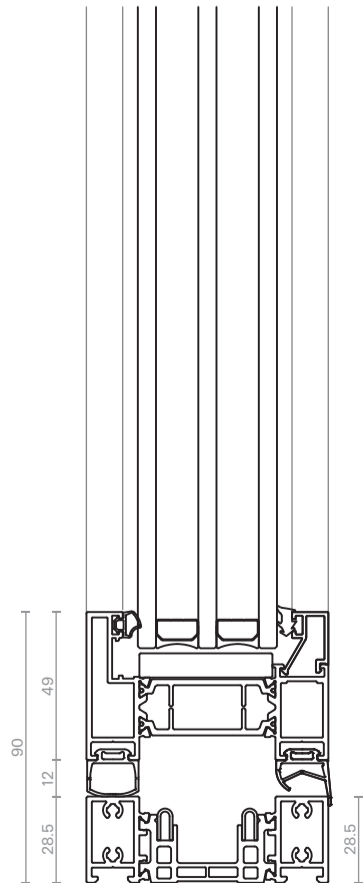
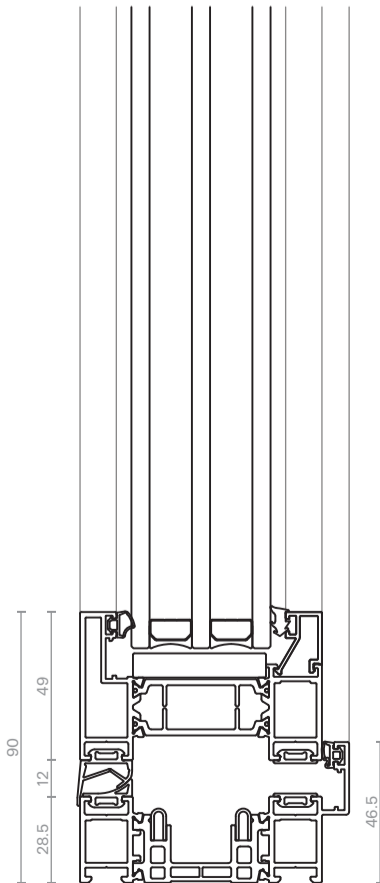
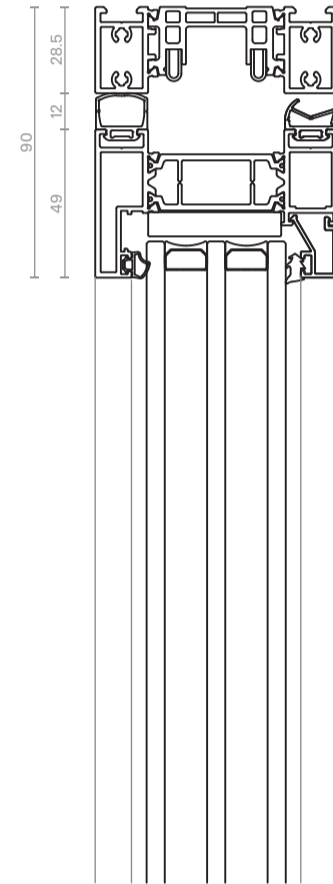
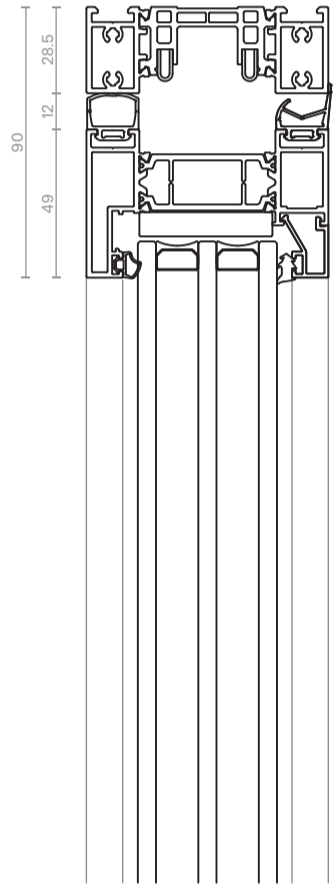
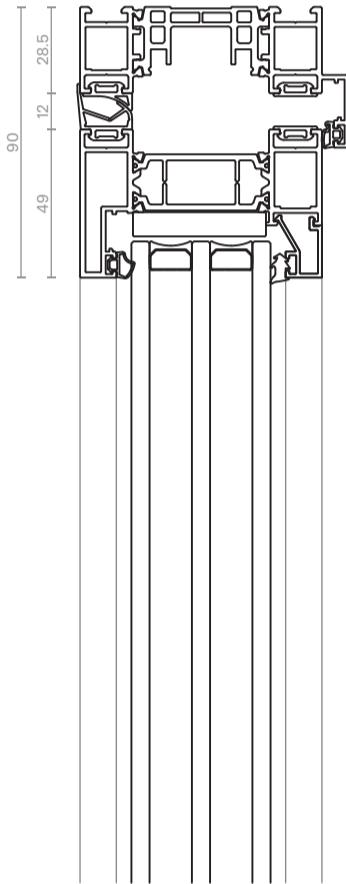
Threshold options

Perla
B1 Bi-fold Doors
Threshold options

49.5 mm
Threshold

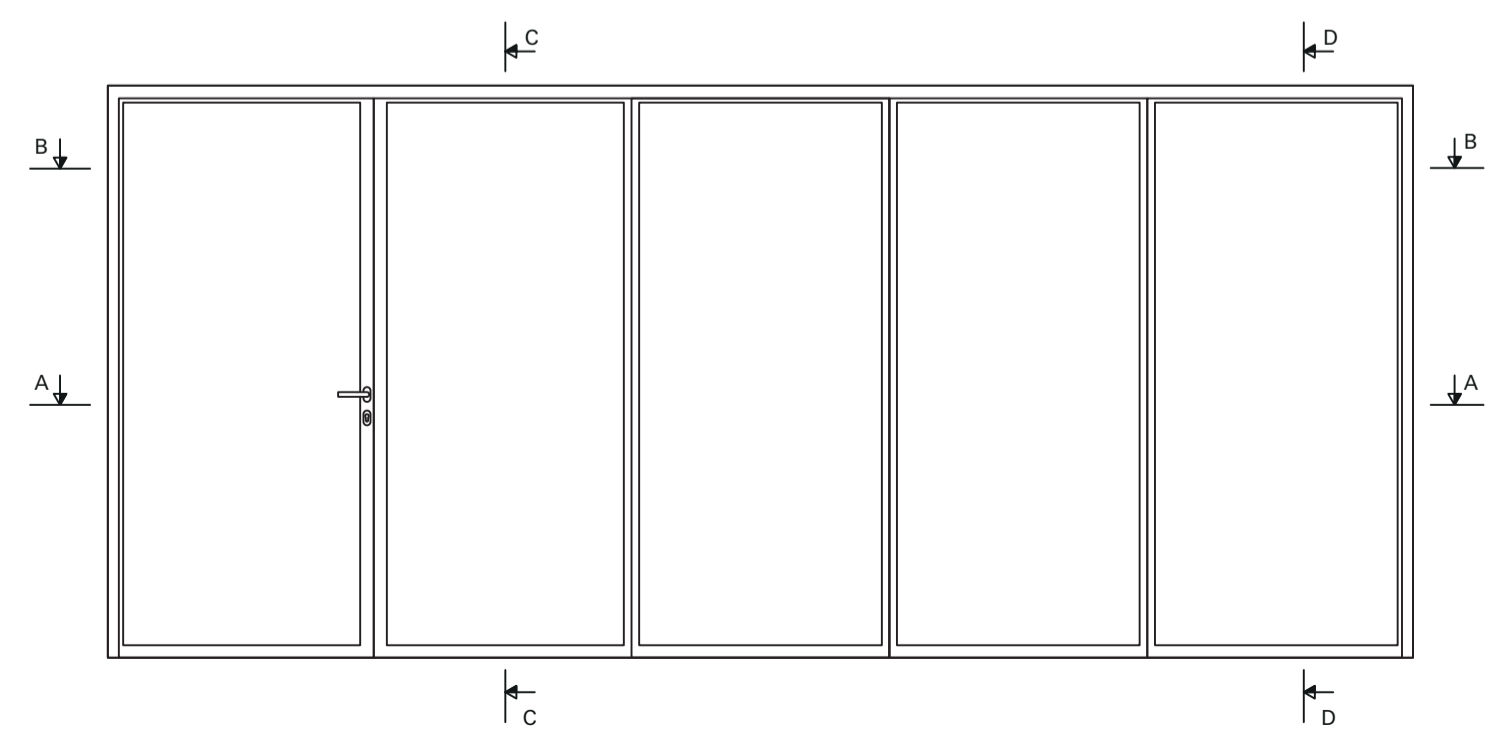
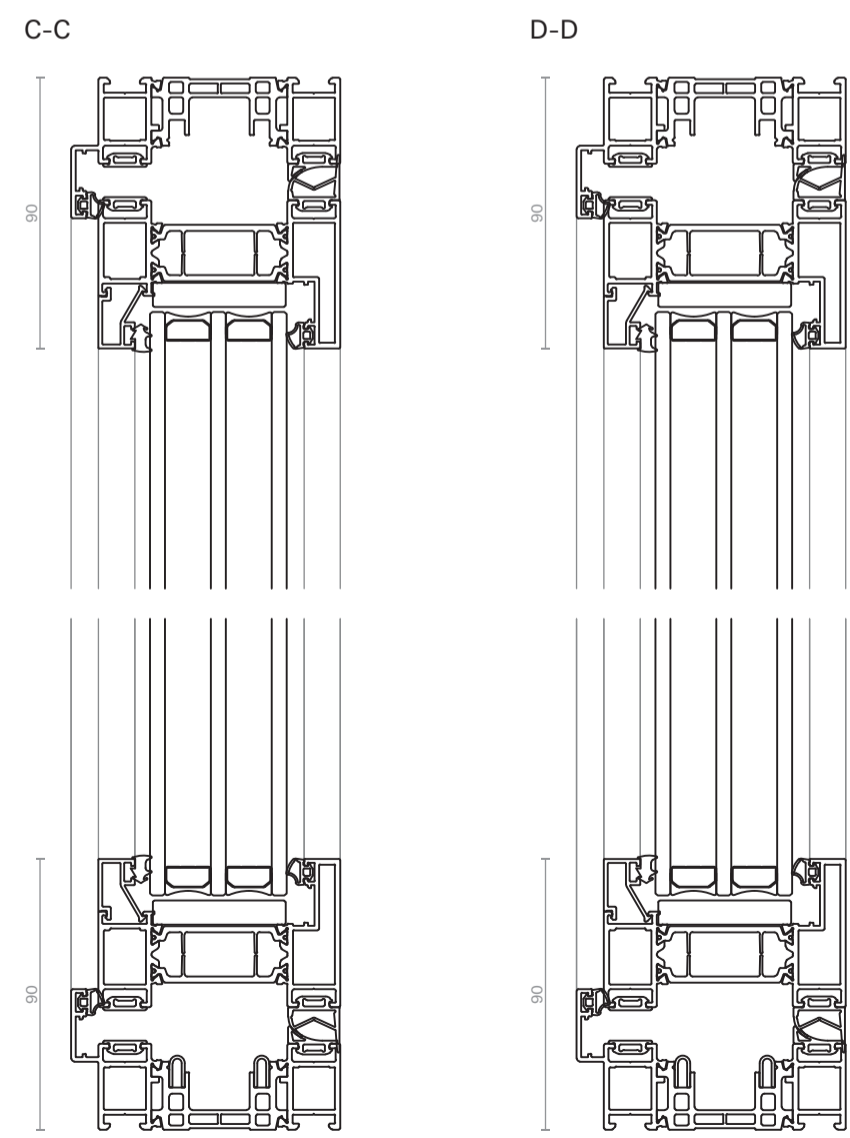
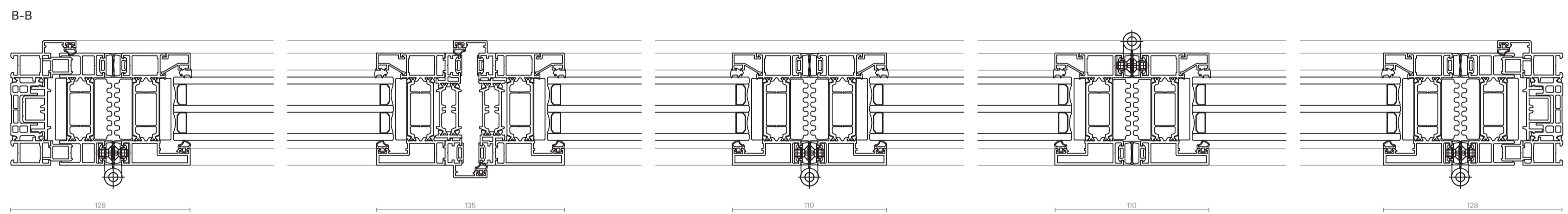
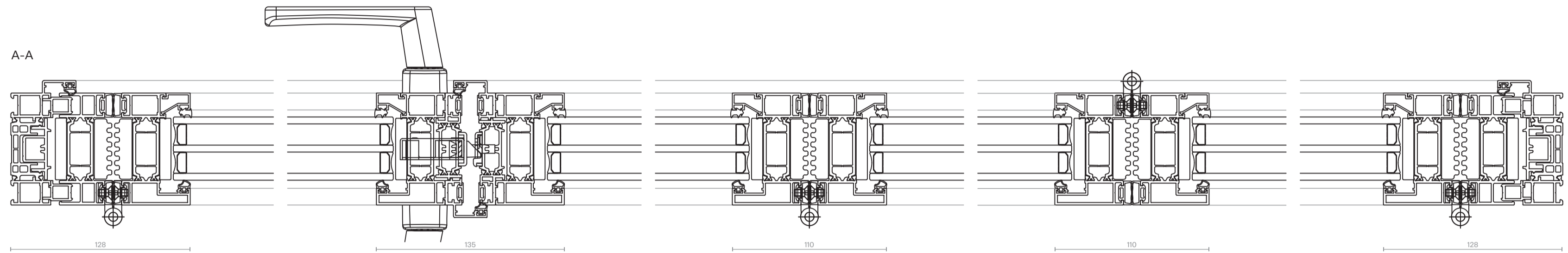
28.5 mm
Threshold

8.5 mm
Threshold



Bi-fold doors

Perla
B1 Bi-fold Doors
Example drawings



We reserve the right to make technical improvements or modifications of any type even during the validity of this catalogue without prior notice to the customer. Perla Windows Limited takes no liability for misprints or mistakes in scale reproductions. No part of this catalogue may be published, distributed, extracted, reused or reproduced in any form except under written permission by Perla Windows Limited. Technical drawings are for guidance only and must be studied and verified from a mechanical, functional and static point of view, relieving the companies of every responsibility of any kind.

Published 04.2025. Subject to change.



Perla Windows Limited
Unit 2, 8 Greenock Road
Acton Industrial Estate
London W3 8DU UK

T +44 0 203 906 1776
E info@perlawindows.com

www.perlawindows.com



Find out more and be inspired